



# FOR SALE

## MODERN 4-5 BEDROOM IN SORT AFTER ROSEBERY

### LEASED TO JULY 2025

Designed with the family in mind – this supersized home offers a versatile floorplan with plenty of room to grow! The home makers will revel in the opportunity to take this from house to home while the savvy investors will enjoy the low maintenance approach that yields a great return.

Located in ever popular Rosebery, surrounded with bushlands and parks to explore with the family, this home sits high back off the street with a wide frontage and open front lawns that have easy care gardens and that low maintenance appeal. At the front of the home is a dual carport parking area along with a sheltered porch that has security screens and a formal entry to the home with a small foyer as well.

Central to the home are the living, dining and kitchen areas all with tiled flooring and large windows to let in the abundance of natural light. Additionally there is an extended living room with double doors that could be a large 5th bedroom option, cosy media room or a craft room – you decide. The kitchen has an island bench and wrap around counters with banks of built in storage space and a view over the living areas and the outdoor entertaining areas as well as a pop of colour for the wow factor.

Down the hallway are 4 bedrooms all with A/C and a built in robe – the master is upgraded with a walk in robe and an ensuite bathroom as well as a view over the verandah. The main bathroom has a bath tub / shower combo and a sep toilet plus there is an internal laundry room with access to the side of the home.

Outside is a verandah that overlooks easy care tropical gardens and wide open areas for the

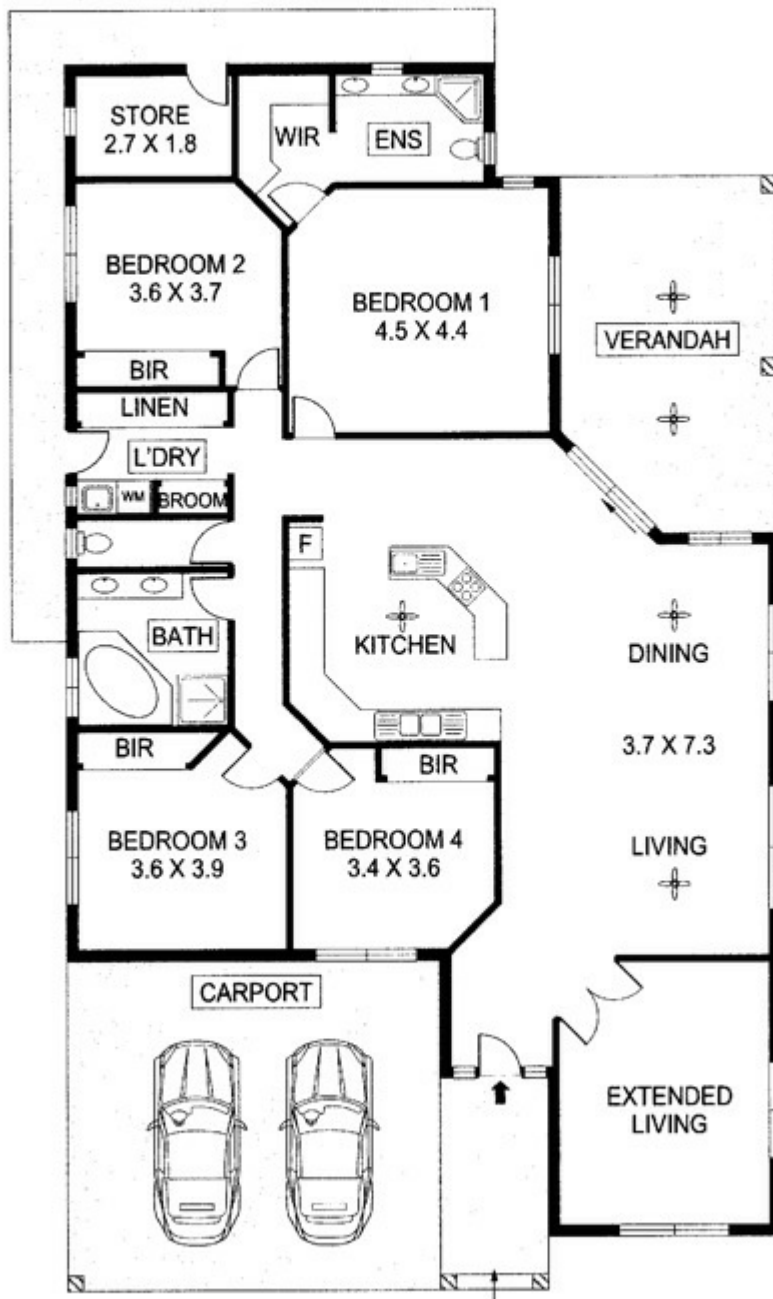
5 BED | 2 BATH | 2 CAR

PRICE:  
\$639,000

OPEN FOR INSPECTION:  
N/A



**John Simpson**  
0416228270  
johnsimpson@atrealty.com.au  
[www.atrealty.com.au](http://www.atrealty.com.au)



Scale in metres. Indicative only. Dimensions are approximate. All information contained herein is gathered from sources we believe to be reliable. However we cannot guarantee its accuracy and interested persons should rely on their own enquiries.

Disclaimer: Please note this floor plan is for marketing purposes and is to be used as a guide only. All dimensions are estimates only and may not be exact measurements.