

FOR SALE

EFFORTLESS URBAN LIVING WITH PREMIUM AMENITIES

Seize the opportunity to own a stylish 1-bedroom apartment in the heart of Canberra. This 2nd floor gem in the coveted Metropol complex is perfect for first-home buyers looking for a modern, and easy place to make home.

Step inside to discover a cleverly designed open-plan layout that optimizes both space and natural light. The seamless flow from the living and dining area to the private balcony creates an ideal setting for relaxation or entertaining, with views over the city or nearby gardens. A sleek, contemporary kitchen is fully equipped with premium stainless steel appliances, including a built-in oven, cooktop, and dishwasher. Stone benchtops and plentiful storage enhance the kitchen's functionality and style.

The generously sized bedroom comes with built-in wardrobes, offering ample storage while keeping the aesthetic clean and minimalist. In the designer bathroom, you'll find modern fixtures, a spacious shower, and elegant finishes that evoke a sense of luxury and sophistication.

Enjoy urban convenience just moments away from Canberra Centre, Glebe Park, and key transport links like buses, light rail, and bike paths. Metropol's striking design and amenities, including private rooftop gardens, a spa, relaxation room, chef's kitchen, and panoramic viewing terraces, provide an unrivalled lifestyle for residents and investors alike.

Whether you're looking to step onto the property ladder or expand your portfolio, this modern 1-bedroom apartment promises both style and convenience.

Inclusions

- Modern one bedroom apartment
- Open-plan living space with contemporary finishes
- Hybrid timber flooring through living
- Master with built in robes
- Kitchen with stone benchtops & SMEG appliances
- Floor to ceiling double glazed windows throughout
- Private balcony enclosed from the elements
- Secure basement carpark & storage cage

1 BED | 1 BATH | 1 CAR

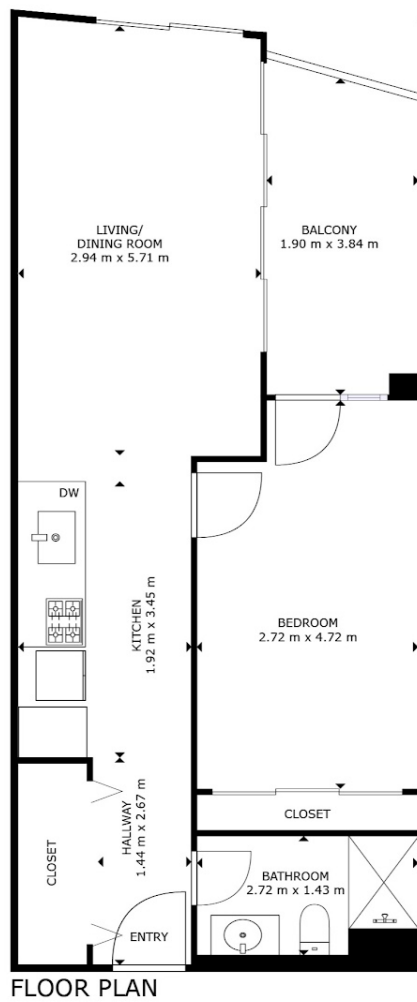
PRICE:
\$450,000

OPEN FOR INSPECTION:
N/A



Sarah Cooper
0478847993

sarah@thepropertyagents.com.au
thepropertyagents.com.au



Disclaimer: Please note this floor plan is for marketing purposes and is to be used as a guide only. All dimensions are estimates only and may not be exact measurements.