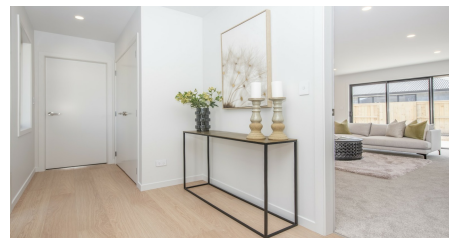


**8 HAUHAKE TERRACE,  
CAMBRIDGE, WAIPA, WAIKATO**



# FOR SALE

## A CLEVER STYLISH PRACTICAL BRAND NEW HOME

Sean Senior of Realty HQ - is proud to bring to the market yet another quality new build from local Master Builders - NMS HOMES.

Designed with a clever and practical floor plan to deliver spacious bedrooms, an open plan living space and a completely separate media room.

Positioned on one of the best sections in Kotare park - Key features to this home include:

- Modern Kitchen: Equipped with high-end appliances, stone countertops, and a stylish island, this kitchen is a chef's paradise.
- Double access walk-in pantry - via the garage and kitchen - making shopping drop off a breeze.
- Luxurious Master Suite: The supersized master bedroom offers a tranquil retreat with a large walk-in closet and a fully tiled bathroom.
- Master bedroom also having 2 access points either from the bedroom quarter hallway - or from the family room. - Allowing parents to sneak to bed without waking the little ones up.
- Elegant Bathrooms: Each bathroom is finished with high-end fixtures and tasteful tile work.
- Outdoor Space: Flowing off the main living. This is perfect for entertaining or simply relaxing in a delightful outdoor space.
- Lock Up Garage: A spacious internal access garage.

There is a reason why they are called NMS Homes and Not NMS Houses - they

3 | 2 | 2

PRICE:  
Asking price \$1,119,000



**Sean Senior**  
02102317949  
sean@realtyhq.co.nz  
www.realtyhq.co.nz

@realty Limited Licensed REA 2008