



FOR SALE

FOR GROWING FAMILIES

Nested in a quiet cul-de-sac, this 3 to 4 bedroom elevated home receives loads of natural light and offers a lovely outlook, that stretches out over the suburbs to the Derwent River, and beyond to the Tasman Bridge.

Spanning over approximately 145 m2, the residence features a clever floor plan that showcases expansive living and dining areas, plus a sunroom/4th bedroom with direct patio access. The remaining bedrooms are spacious and thoughtfully located away from the central living areas.

When you hear the saying "it's got good bones" then this home exemplifies it! With a bit of creative flair, you could easily modernise this home on a tight budget if you wanted to, making this home more amazing than it already is!

There is plenty of storage inside, as well as a separate storage room underneath plus a lock up single garage. There's off street parking for possibly two vehicles, and the rear yard is fenced for pet and child safety.

If you're looking for a property that offers a convenient location and plenty of room to move, then 6 Ewens Court is a "must" to put on your inspection list.

4 BED | 1 BATH | 1 CAR

PRICE:

Offers over \$525,000

OPEN FOR INSPECTION:

N/A

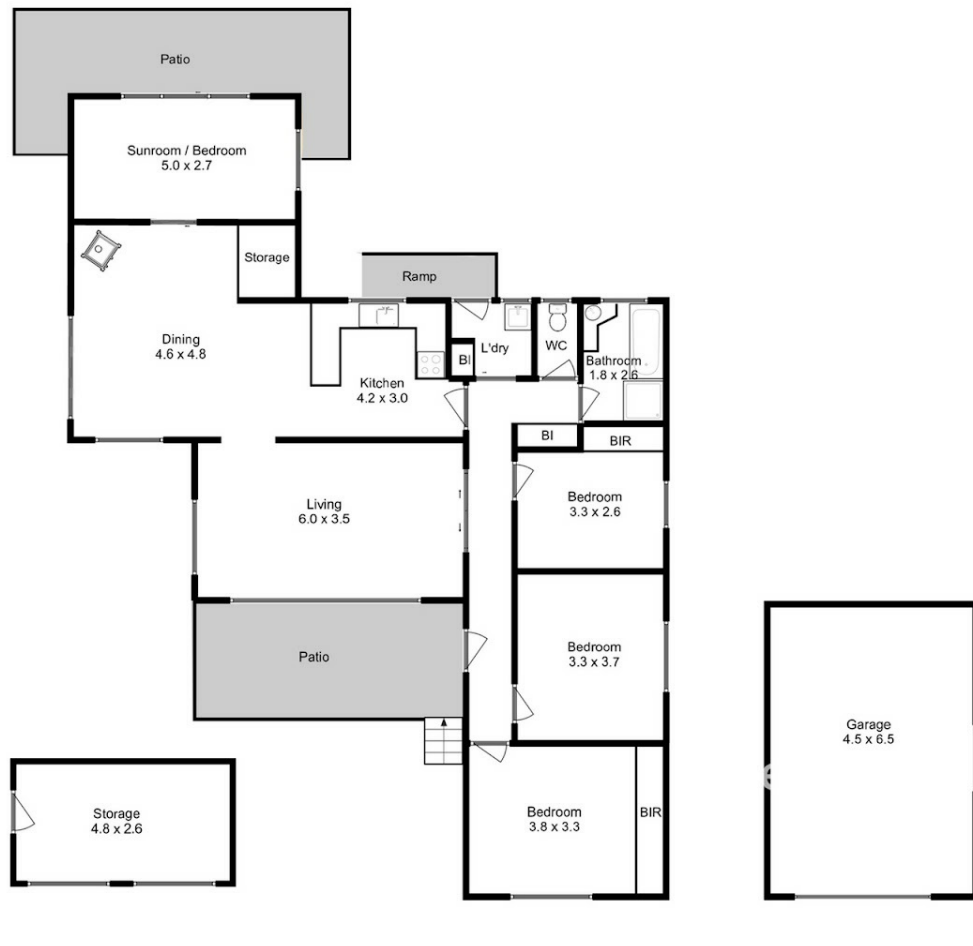


Nikki Moller

0408924765

nikkimoller@atrealty.com.au

www.atrealty.com.au



Approx. House Area : 135 sqm
Approx. Garage & Storage Area : 41 sqm

All measurements are internal and approximate.
This plan is a sketch for illustration, not valuation.
Produced by Open2view.com

Disclaimer: Please note this floor plan is for marketing purposes and is to be used as a guide only. All dimensions are estimates only and may not be exact measurements.