



SOLD

MOVE STRAIGHT INTO THE HEART OF HOPPERS

Located in the heart of Hoppers Crossing, this spacious brick home presents a fantastic opportunity for first home buyers and families alike. Offering the perfect blend of comfort and convenience, this home is designed for easy living with its move-straight-in appeal.

Upon entering, you'll be greeted by a bright and free-flowing living area that captures an abundance of natural light, providing the perfect space for family gatherings or quiet relaxation. The property features three spacious bedrooms, all with built-in-robies, including a large master bedroom with a full ensuite bathroom and walk-in wardrobe for added comfort and privacy. Additional interior features include ducted heating, split-system cooling, and ceiling fans, ensuring year-round comfort.

Stepping outside, you'll discover a large outdoor undercover entertainment zone, ideal for summer barbecues, kids' playtime, or relaxing in the large grassy backyard. With ample space for entertaining, this home truly delivers both inside and out.

The location couldn't be more ideal—situated close to Grange P-12 College, Tarneit West, and Hogans Corner shopping centres, as well as bus stops and nearby parks, offering a convenient lifestyle for families. Don't miss your chance to secure a beautiful home in this highly sought-after area of Hoppers Crossing.

3 BED | 2 BATH | 1 CAR

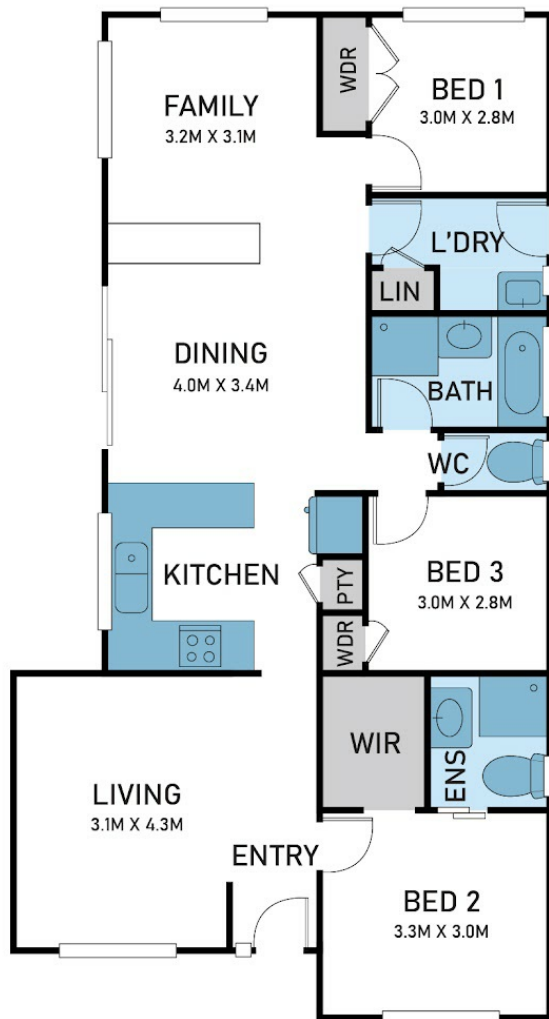
PRICE:
\$556,000

OPEN FOR INSPECTION:
N/A

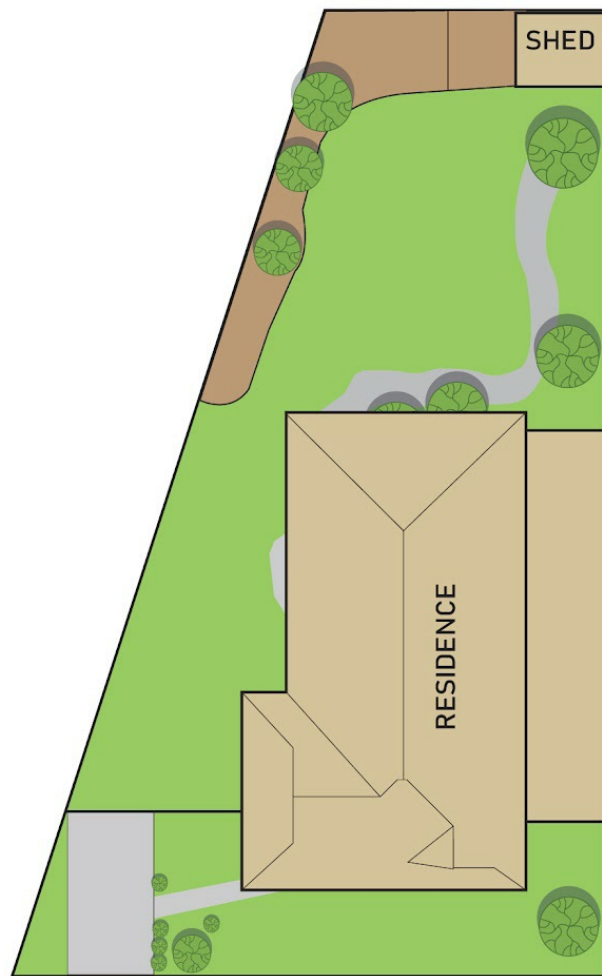


Samuel Hogan
0401315234
samuel@atrealty.com.au
www.atrealty.com.au

FLOOR PLAN



SITE PLAN



19 SANDLEFORD WAY, HOPPERS CROSSING

FLOOR AND SITE PLAN IS FOR ILLUSTRATIVE PURPOSES ONLY AND NOT TO SCALE. THE VENDOR, AGENCY OR SUPPLIER MAKE NO GUARANTEE, WARRANTY OR REPRESENTATION AS TO THE ACCURACY OF ANY INFORMATION CONTAINED HEREIN AND THE COMPLETENESS OF THE FLOOR PLANNED WILL ACCEPT NO LIABILITY FOR ITS ACCURACY. INTERESTED PARTIES ARE ADVISED TO MAKE THEIR OWN INDEPENDENT ENQUIRIES.

Disclaimer: Please note this floor plan is for marketing purposes and is to be used as a guide only. All dimensions are estimates only and may not be exact measurements.