



FOR SALE

CONVENIENT LIVING NEAR SCHOOLS AND SHOPS

Situated in the lively suburb of Werribee, this delightful brick home is a haven for outdoor entertaining. Offering convenient access to Werribee's top amenities, this opportunity sits at the top of the list for those who seek a fantastic lifestyle.

Upon entering, you'll be greeted by a bright and welcoming living space, setting the stage for this lovely three-bedroom abode. The expansive kitchen, nestled in an open dining setting, ensures seamless flow for cooking, gathering, and entertaining guests. Additional features include ducted heating and evaporative cooling, providing year-round comfort.

The classic brick exterior exudes timeless charm, complemented by a garage featuring enclosed decking and an electric gate for enhanced convenience and security. Step outside to discover a generous outdoor entertainment area, perfect for hosting gatherings, enjoying barbecues, or simply unwinding in the fresh air. The ample grassy space is ideal for children to play and for families to savour sunny summer days.

This property is conveniently located just a short drive from Westgrove Primary School and Bethany Catholic Primary School, making it a perfect fit for families. Enjoy easy access to the renowned Pacific Werribee Shopping Centre, the scenic Werribee River walking trail, and a wealth of nearby parks, all adding to the allure of this exceptional home.

Don't miss the opportunity to secure this fantastic property in the heart of Werribee. Call today to schedule your inspection!

3 BED | 1 BATH | 2 CAR

PRICE:

\$530,000 - \$560,000

OPEN FOR INSPECTION:

N/A



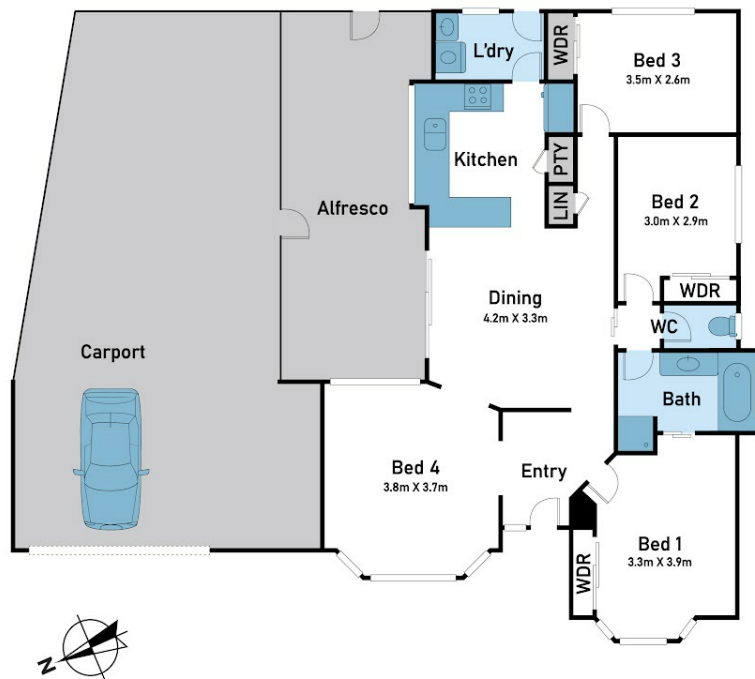
Samuel Hogan

0401315234

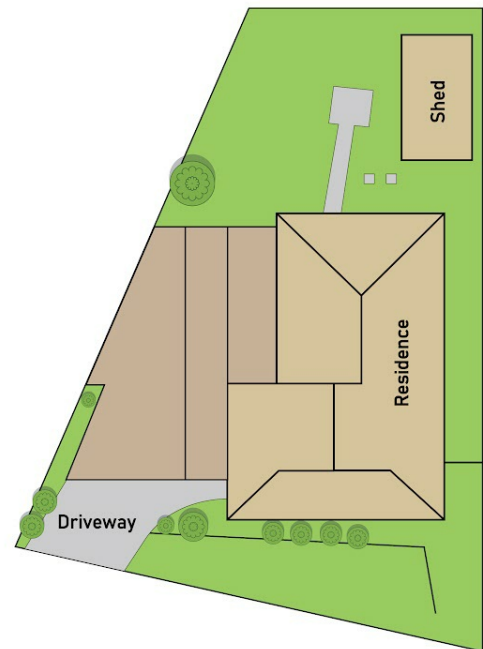
samuel@atrealty.com.au

www.atrealty.com.au

Floor Plan



Site Plan



@realty

4 Rhine Street, Werribee

Floor and Site Plan is for illustrative purposes only and not to scale. The vendor, agency or supplier make no guarantee, warranty or representation as to the accuracy of any information contained herein and the completeness of the floor planned will accept no liability for its accuracy. Interested parties are advised to make their own independent enquiries.

Disclaimer: Please note this floor plan is for marketing purposes and is to be used as a guide only. All dimensions are estimates only and may not be exact measurements.