

# SOLD

## SUPERIOR SPACE & QUALITY WITH PANORAMIC VIEWS

A blue chip investment in lifestyle for home or rental. This expansive indoor/outdoor entertainer offers spacious two double-bedroom living with panoramic district views, top-of-the-range finishes and the convenience of shops, eateries and transport at the doorstep. The contemporary apartment is set on Level 10 of the Meriton-built "Ironbark" security complex with the benefit of a concierge, well-equipped gym, sauna and secure basement parking with storage cage. Right at the heart of Pymble village, this tranquil treetop retreat is moments to cafes, restaurants, schools, health and beauty services, with bus and rail at the doorstep providing easy access to the City and North Shore business centres.

- + Living/dining flows to generous covered balcony
- + Tranquil leafy vistas and panoramic district views
- + Caesarstone kitchen with SS Omega apps, breakfast bar
- + Master bedroom with ensuite and main balcony access
- + Second double bedroom with built-ins & private balcony
- + Split system AC in living & bedrooms, wool carpet
- + Fully-tiled bathrooms, ensuite with bath, internal laundry
- + Building A of 2011 Meriton-built "Ironbark" complex
- + A stone's throw to Pymble Ladies College and rail
- + Easy access to top private schools & Macquarie Uni
- + Gordon West Public and Turrumurra High catchment
- + Direct train & road routes to Chatswood, City & North
- + Walk to tennis courts & walking/bike trails, 5 mins to pool
- + Quality investment, easy care entertainer or downsizer

Internal area including balcony: 113sqm  
Total area: 130sqm

Disclaimer: Atrealty believes that this information is correct but it does not warrant or guarantee its accuracy. Certain information has been obtained from external sources. All interested parties should make and rely upon their own inquiries in order to determine whether or not this information is in fact accurate. We do not accept any responsibility to any person for its accuracy and do no more than pass it on. Figures may be subject to change without notice.

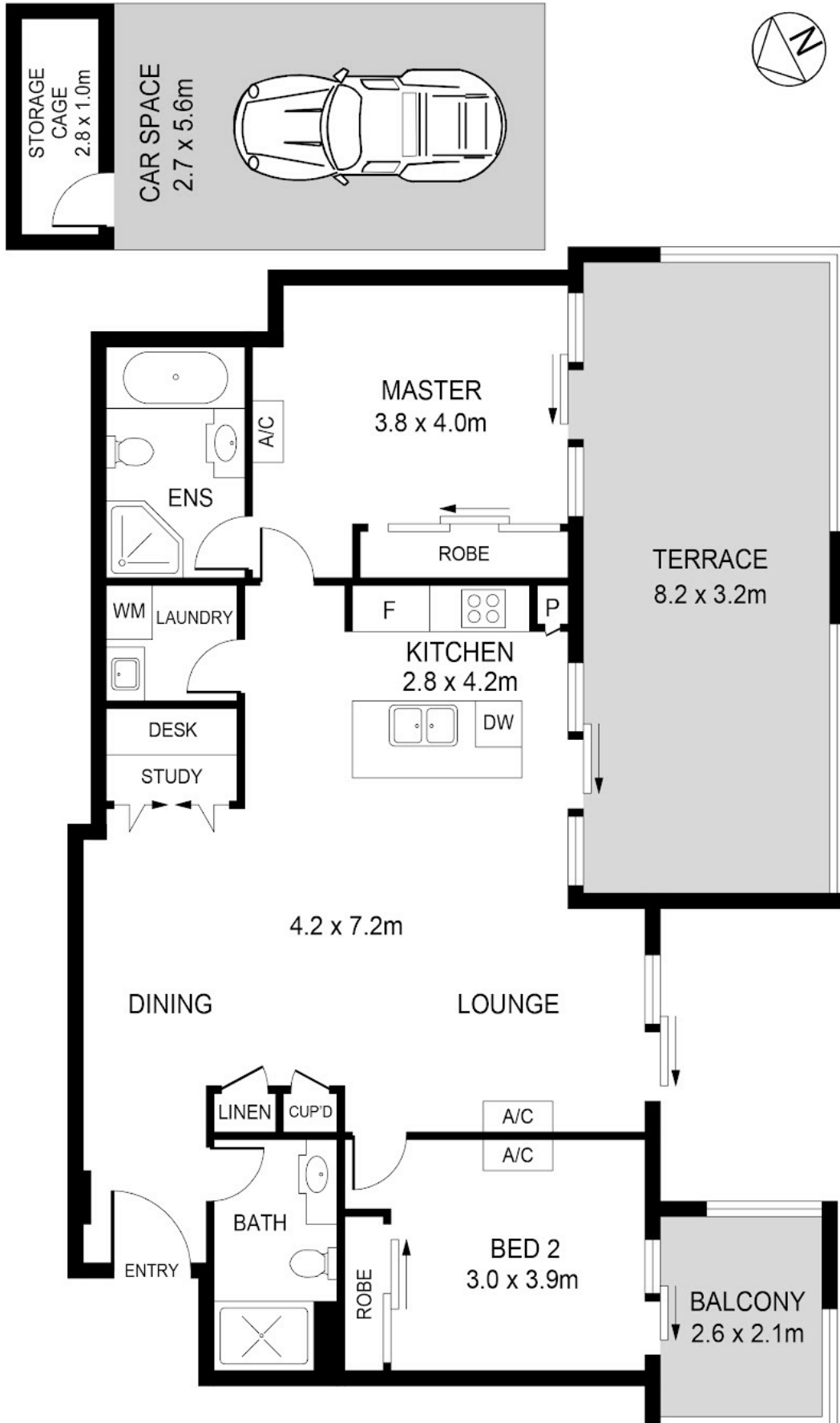
2 BED | 2 BATH | 1 CAR

PRICE:  
\$885,000

OPEN FOR INSPECTION:  
N/A



**Ning Widjaja**  
0416197919  
ning@atrealty.com.au  
[www.atrealty.com.au](http://www.atrealty.com.au)



Disclaimer: Please note this floor plan is for marketing purposes and is to be used as a guide only. All dimensions are estimates only and may not be exact measurements.

DISCLAIMER:

PLANS SHOWN ARE FOR MARKETING PURPOSES ONLY, ALL DIMENSIONS ARE APPROXIMATE AND NOT TO SCALE. THEY ARE SUBJECT TO ERRORS AND INACCURACIES AND NO LIABILITY WILL BE ASSUMED. INTERESTED PARTIES SHOULD MAKE THEIR OWN INQUIRIES.

**Ning Widjaja**  
0416197919

ning@atrealty.com.au

www.atrealty.com.au

