

16 TE MANA STREET OMAHA



FOR SALE

SECLUDED OMAHA PARADISE

Discover the Hamptons and 'The Islands' at Omaha Beach, with this award-winning residence offering a unique blend of luxury and comfort. Just steps from the café and surf club in the heart of Auckland's premier beach community. 16 Te Mana is perfect for a salubrious holiday home or a cosy retirement retreat.

Idyllic Location: Enjoy the serenity of beachside living while being close to local amenities.
Tropical Oasis: Lush, private gardens provide a tranquil escape. Relax outdoors under the expansive Louvretec dining area or follow the sun and listen to the birds in the palms. Then finish your day at the beach by relaxing next to the warm outdoor fire.

Elegant Design: Lovingly designed and meticulously maintained by the current owners, this home boasts exquisite attention to detail and high-quality materials throughout.

Spacious Master Suite: The bespoke wrought iron and rimu handrail lead you to a spacious upstairs master bedroom featuring a sumptuous ensuite, a cosy nook, and an expansive wardrobe.

Versatile Living: Two well-appointed bedrooms downstairs accommodate family and friends, with the option for a teenage bunk-room in the insulated garage.

Open Plan Living: Enjoy seamless indoor-outdoor flow with an open-plan lounge, kitchen, and dining area, perfect for the inevitable guest entertaining and relaxation.

This stunning beach house embodies a luxury resort style paradise all year round. With the vendors having moved on, you can be in to enjoy the perfect Christmas!

Don't miss your chance to own this piece of paradise contact me today for all the details. To be sold by Auction onsite Sunday November 17th onsite (unless sold prior).

3 BED | 2 BATH | 2 CAR

PRICE:
Auction

OPEN FOR INSPECTION:
N/A



Rod Cheeseman

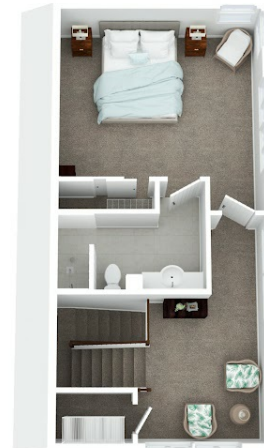
021875331

rod@rodcheesemanrealty.co.nz

rodcheesemanrealty.co.nz



Ground Floor



First Floor

DISCLAIMER: PLEASE NOTE THIS FLOOR PLAN IS FOR MARKETING PURPOSES AND IS TO BE USED AS A GUIDE ONLY. ALL EFFORTS HAVE BEEN MADE TO ENSURE ITS ACCURACY, HOWEVER SOME SURFACES, FLOORING, FIXTURES, FURNITURE & ITEMS MAY NOT REPRESENT THE ACTUAL PROPERTY.

16 Te Mana Street, Omaha

imaging.
CREATED BY LP IMAGING LTD © 2024
WWW.LPIMAGING.CO.NZ

Disclaimer: Please note this floor plan is for marketing purposes and is to be used as a guide only. All dimensions are estimates only and may not be exact measurements.