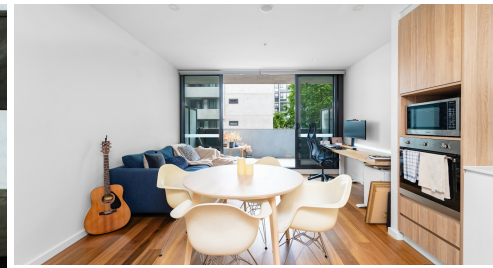


114/55 CURRONG STREET NORTH BRADDON

Sarah Cooper
FREELANCE AGENT



FOR SALE

NEW PRICE- SECURE YOUR FUTURE IN BRADDON TODAY

Only 2 years old, this contemporary apartment offers premium inclusions and unbeatable access to everything Canberra has to offer. Upon entering, you'll be captivated by the stunning timber floors throughout the living areas, complemented by high ceilings that create an enhanced sense of space and light, a rare feature in apartment living. The sleek, single-wall kitchen boasts stone benchtops, soft-close drawers, a mirrored splashback, and quality SMEG appliances.

Spend weekends with friends on the rooftop garden, complete with BBQ facilities and sweeping views, or explore the array of nearby restaurants and bars. Perfectly located next to the city centre, Dawn provides a lifestyle unmatched in one of Canberra's most sought-after areas. Nestled between the vibrant Braddon precinct and scenic Mt. Ainslie nature reserves, this home offers instant access to city life, dining, shopping, and outdoor experiences, with the light rail and bus stops just a short stroll away.

With nothing to do but move in, this apartment is ideal for owner-occupiers and investors alike, with the current tenant happy to extend their lease.

Apartment Features

- Light-filled open-plan lounge and dining area
- Stylish kitchen with SMEG appliances, stone benchtops, and mirrored splashback
- Bathroom with floor-to-ceiling tiles and custom vanity
- Spacious master bedroom with mirrored built-in robes
- Beautiful timber floors in living areas
- Double-glazed, floor-to-ceiling sliding doors to the balcony
- Central heating and cooling
- Secure basement car park and storage cage
- Lift access and secure swipe access to the building
- Video intercom

Property Details

Development: Dawn, part of the Founders Lane Development
Built in 2022 by JW Land

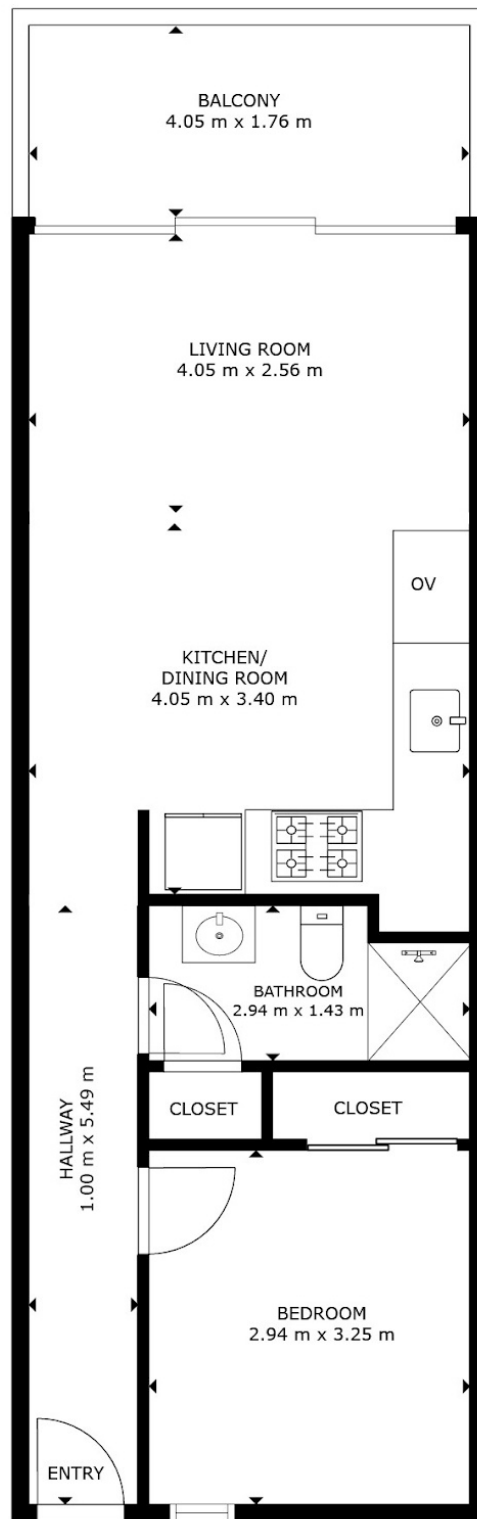
1 BED | 1 BATH | 1 CAR

PRICE:
\$469,000

OPEN FOR INSPECTION:
N/A



Sarah Cooper
0478847993
sarah@thepropertyagents.com.au
thepropertyagents.com.au



FLOOR PLAN

Disclaimer: Please note this floor plan is for marketing purposes and is to be used as a guide only. All dimensions are estimates only and may not be exact measurements.