



**SOLD**

## GROUND LEVEL INVESTMENT

TENANTED AT \$480 PER WEEK UNTIL FEBRUARY 2025 LOVELY RENOVATED UNIT WITH LOTS OF ROOM TO MOVE. CLOSE TO SCHOOL AND SHOPS THIS TWO BEDROOM UNIT HAS A LARGE LIVING AREA AND A RENOVATED KITCHEN WITH A FABULOUS BENCH.

FEATURING :

- \* GROUND LEVEL CONVENIENCE
- \* FULLY AIR-CONDITIONED
- \* TILED THROUGHOUT FOR COOL LIVING
- \* FABULOUS KITCHEN WITH EVERYTHING YOU NEED
- \* PRIVATE COURTYARD TO RELAX IN AFTER A HARD DAY AT WORK
- \* DOUBLE CARPORT AT REAR OF COMPLEX
- \* CLOSE TO DAYCARE, SCHOOL AND SHOPS
- \* 10 MINUTE DRIVE TO CASUARINA SHOPPING CENTRE, GREAT CENTRAL LOCATION AT A BARGAIN PRICE.

BODY CORP MANAGERS : WHITTLES BODY CORP FEES :

APPROX \$1334.00 PER QTR

DCC RATES : \$1748.77 PER ANNUM OR \$437.00 PER QTR

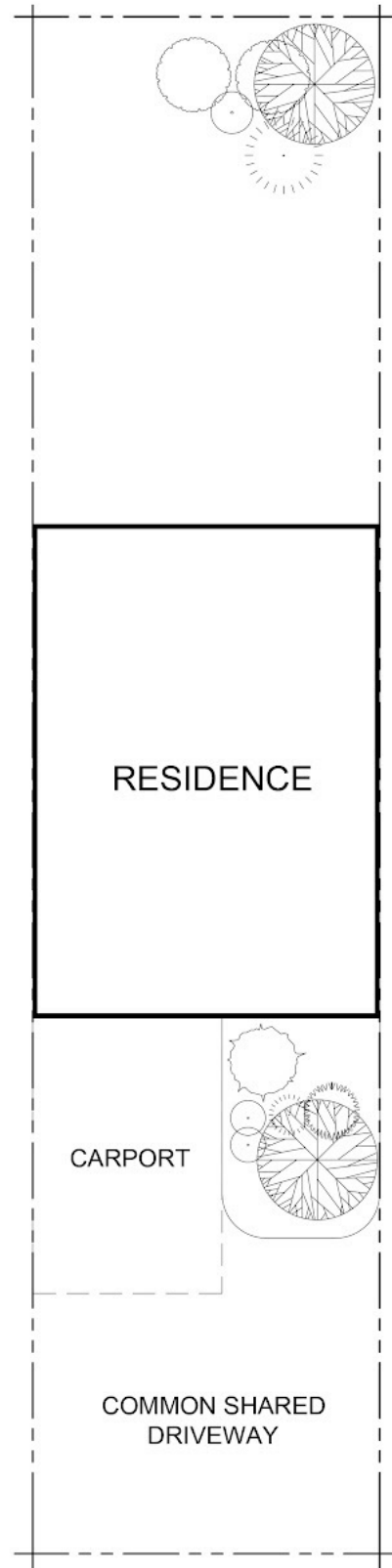
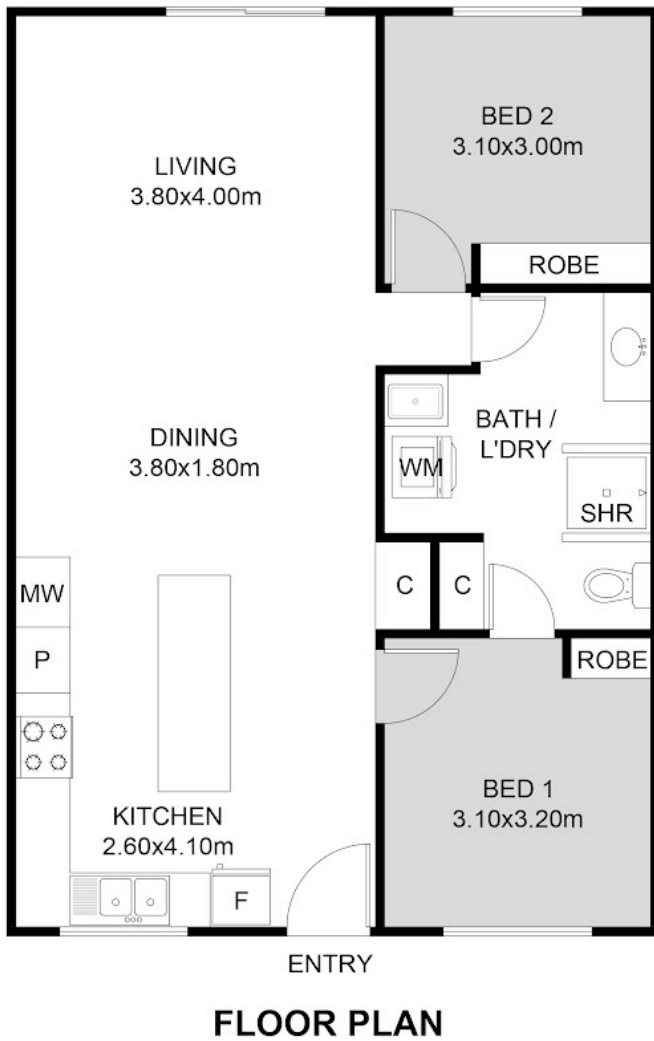
2 BED | 1 BATH | 2 CAR

PRICE:  
\$270,000

OPEN FOR INSPECTION:  
N/A



**Nicole Wheeler**  
**0417508800**  
nicolewheeler@atrealty.com.au  
[www.atrealty.com.au](http://www.atrealty.com.au)



Disclaimer: Please note this floor plan is for marketing purposes and is to be used as a guide only. All dimensions are estimates only and may not be exact measurements.

This floor plan including furniture, fixture measurements and dimensions are approximate and for illustrative purposes only. Boxbrownie.com gives no guarantee, warranty or representation as to the accuracy and layout. All enquiries must be directed to the agent, vendor or party representing this floor plan.