



**SOLD**

## A BIG FAMILY HOME IN A VERY PLEASANT STREET, PRICE REDUCED! EXCEPTIONAL VALUE!

Owners have now reduced the price and are keen to move on. Come and have a look, make your best offer and they will consider it on its merits! Our builder Vendor has built 65 houses during his career and this one he built for himself. What's on offer?

A very solid low maintenance home.

We have four bedrooms, two bathrooms one being an ensuite in the master bedroom with walk in wardrobe.

A large open plan living including kitchen all leading out to the Alfresco Area which looks out to the bright red Bottle Brush Tree.

Sit and enjoy your morning coffee and watch the lorikeets frolicking in the tree. The family bathroom is huge and well equipped, the kitchen is also large with all appliances. Our master bedroom as a walk-in wardrobe and an ensuite bathroom. There is a pleasant rear garden and a large single garage with internal entry and plenty of room in front to park other vehicles.

Only a few minutes' walk to the river, the famous Providore Store, a little bit further to the town centre and Dawn Song preschool is just around the corner.

There are a number of good schools in Bellingen including two private schools and two High Schools. Mylestom Beach is only 20 minutes' drive away and Bellingen does have a handy cottage hospital.

If you are starting out, downsizing, an investor or just looking for a great place to live, this is the home for you.

Spacious, gracious and ready to move into!

Alternatively, this would be a great investment property and would command an excellent rental in this location.

There is still scope to add your own touches if you intend to live there and if you want to put your own stamp on it, that is up to you, if you are intending to rent it out then its fine the way it is.

Please call John Vickers to arrange your inspection phone 0428 380 201

4 BED | 2 BATH | 1 CAR

PRICE:  
\$750,000

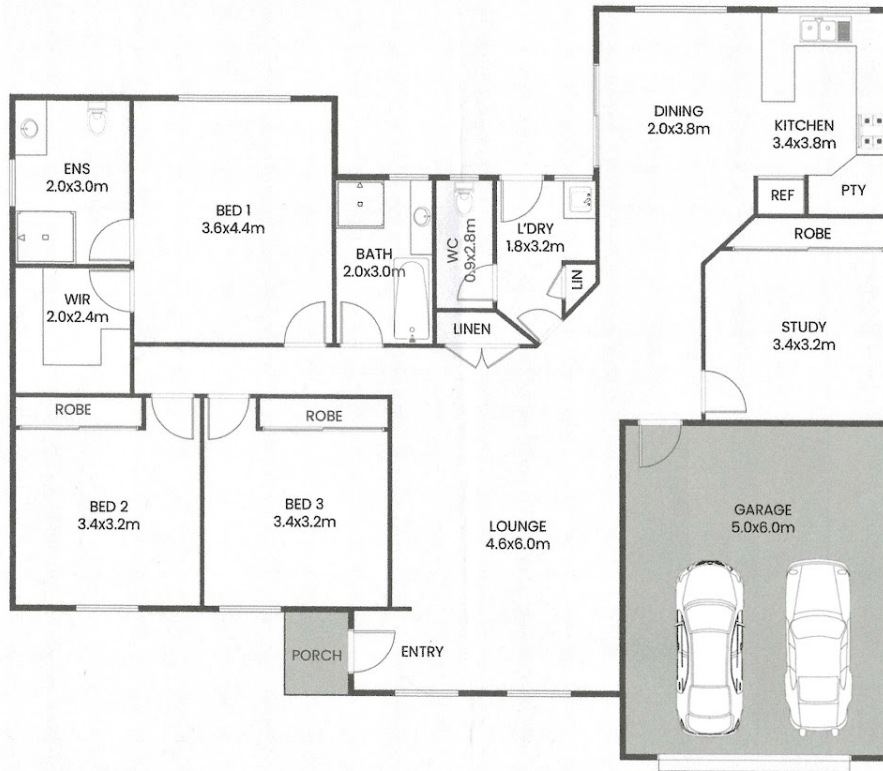
OPEN FOR INSPECTION:  
N/A



**John Vickers**  
**0428380201**

john.vickers@atrealty.com.au  
[www.atrealty.com.au](http://www.atrealty.com.au)

# 11 Kenny Close Bellingen



Scale in metres. Indicative only. Dimensions are approximate. All information contained herein is gathered from sources we believe to be reliable. However, we cannot guarantee its accuracy and interested persons should rely on their own enquiries.



Disclaimer: Please note this floor plan is for marketing purposes and is to be used as a guide only. All dimensions are estimates only and may not be exact measurements.