



SOLD

THE JEWEL IN THE CROWN AT KINGFISHER BAY!

Very seldom does the opportunity arise to secure a prestige, freehold holiday home on World Heritage Listed Fraser Island (K'gari). Conveniently positioned at the peak of the hill at Kingfisher Bay is this master built, Steve Bagnall home, designed to capture the true essence of Island living, with all the modern conveniences.

Privately positioned situated on a large 1004m2 naturally landscaped block, enjoying elevated views over the Bay and out to the Sandy Straits. Peace and tranquillity surround the home whilst still being situated only a short drive or stroll to the beach, and all that Kingfisher Bay has to offer.

- * Open plan, light filled, airy living with timber flooring throughout
- * Raised ceilings, louvers and large window with built in seat
- * Main living and dining leading onto the entertainment area
- * Fully equipped kitchen with dual ovens, double fridge, stone benchtops and pantry
- * Natural gas plumber indoor fire place, and outdoor BBQ
- * Undercover outdoor entertainment area with weather blinds
- * Separate second living room/study or rumpus
- * Expansive master bedroom with private verandah, ensuite. Built in cabinetary with plenty of storage and sink.
- * Second main bedroom with ensuite and ducted a/c
- * Further two bedroom with built in robes and ducted a/c
- * Main bathroom with combine bath and shower, laundry
- * Separate powder room
- * Endless lockable storage throughout
- * External access to two washing lines (one covered one open)
- * Under house lockable storage
- * Oversized double garage with automatic doors (2.3m and 2.6m)
- * U shape driveway offering further parking for boat/cars
- * Naturally landscaped 1004m2 block
- * Build completed early 2007
- * Access to resort facilities, pools, tennis courts, and restaurants

Buyers looking to invest there is potential to achieve up to

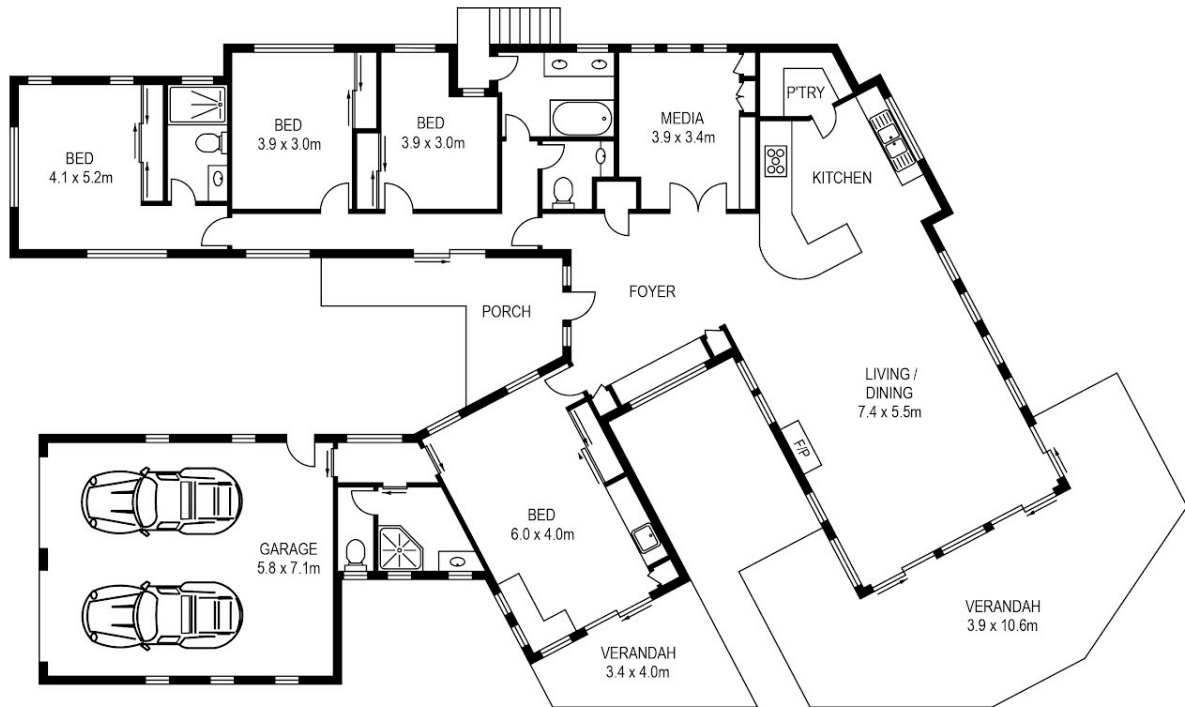
4 BED | 3 BATH | 2 CAR

PRICE:
\$925,000

OPEN FOR INSPECTION:
N/A



Mac Buxton
0467802425
mac.buxton@atrealty.com.au
www.atrealty.com.au



843 KINGFISHER HEIGHTS DRIVE, FRASER ISLAND



PLANS SHOWN ONLY INDICATIVE OF LAYOUT. DIMENSIONS ARE APPROXIMATE.
All information contained herein is gathered from sources we believe to be reliable.
However we cannot guarantee its accuracy and interested persons should rely on their own enquiries.

CREATED BY PROPERTY PIXEL
WWW.PROPERTY-PIXEL.COM.AU

Disclaimer: Please note this floor plan is for marketing purposes and is to be used as a guide only. All dimensions are estimates only and may not be exact measurements.