

FOR SALE

"ESCAPE TO YOUR OWN SLICE OF PARADISE IN BEAUTIFUL BAUPLE. EMBRACE THE SERENE LIFESTYLE OF ACREAGE LIVING ON OVER AN ACRE OF LAND."

Welcome to your own slice of paradise in Bauple, Queensland! This beautiful semi-rural property is now available and ready for you to call home. Set on a generous 5201 square meters, the lush gardens and expansive lawns create a serene escape from city life.

Inside, you'll find a bright, spacious open-plan living area that seamlessly connects to a modern kitchen featuring ample bench space, storage, and contemporary appliances. Picture yourself preparing meals while enjoying views of the countryside. An outdoor kitchen and dining area make entertaining effortless, perfect for enjoying a bottle of water or a glass of wine as the sun sets.

The property also boasts a large double shed, a carport ideal for your caravan, and a double garage, providing plenty of space for all your vehicles and storage needs. Additionally, with solar panels installed, you can enjoy energy efficiency and reduced utility costs. You'll benefit from bore water for irrigation, ensuring your gardens thrive year-round.

The bedrooms are designed for relaxation, featuring large windows that frame the stunning surroundings. The master bedroom opens onto a lovely verandah, providing a peaceful retreat where you can unwind. Plus, there's a convenient second toilet for added functionality.

Step outside to an expansive deck with a covered alfresco area, ideal for enjoying the outdoors year-round. Explore your private oasis and envision endless possibilities—perhaps a pool or spa.

Located in the charming town of Bauple, you'll enjoy the tranquility of rural living while still having access to local shops and cafes. The vibrant city of Maryborough is just a short drive away, ensuring you stay connected.

Don't miss the chance to make this stunning property your forever home. Contact us today to arrange a viewing and experience the beauty of this property for yourself!

3 BED | 1 BATH | 5 CAR

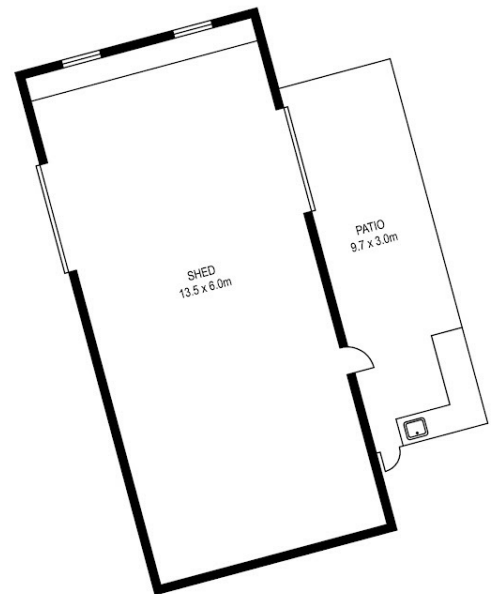
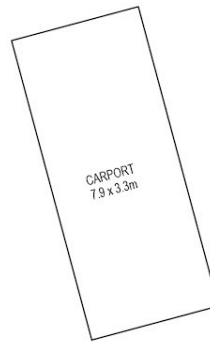
PRICE:
Contact Agent

OPEN FOR INSPECTION:
N/A



Sean Coulton
0447389260

sean@impactpg.com.au
www.impactproperties.au



12 DANIEL ROAD, BAUPLE

PLANS SHOWN ONLY INDICATIVE OF LAYOUT. DIMENSIONS ARE APPROXIMATE.
 All information contained herein is gathered from sources we believe to be reliable.
 However we cannot guarantee its accuracy and interested persons should rely on their own enquiries.



CREATED BY PROPERTY PIXEL
 WWW.PROPERTY-PIXEL.COM.AU

Disclaimer: Please note this floor plan is for marketing purposes and is to be used as a guide only. All dimensions are estimates only and may not be exact measurements.