



**SOLD**

## UNLEASH YOUR INNER VISIONARY: TRANSFORM THIS PRIME PROPERTY INTO YOUR DREAM HOME!

Discover this home nestled in a sought-after neighbourhood and peaceful township of Longwarry. If you're looking to take advantage of this market and you're not afraid to roll up your sleeves, this is the home for you!

Consisting of 4 well sized bedrooms each with built-in wardrobes, and the master bedroom with its walk-in wardrobe and ensuite. The guest bathroom features a large bath, perfect for relaxing with a glass of wine after a long day, or for the kids to play in.

The open plan kitchen and dining are the centre of the home, flowing right out into the outdoor area, which is fully covered and concreted, this home is set up to entertain. Points for your TV are already wired up, along with ample power points. Drainage and connections have been done for a spa to be installed; all you need to do is bring your own!

Whether you're looking for an investment or upsizing for your family what we have on offer is a rare opportunity for visionary buyers. With potential brimming around every corner, this is your chance to transform and design a masterpiece that truly reflects your unique taste and style.

Don't miss out on this exceptional opportunity to own a piece of real estate in a prime location within walking distance from local parks, train station, the local recreation reserve and primary school.

Contact us today to explore the endless possibilities awaiting you at this address!

Disclaimer : The information about this property has been supplied to us in good faith, while we have no cause to doubt its accuracy. Land and home dimensions and floor/site plans are supplied by third parties. Typing mistakes and omissions transposing can occur, we provide to assist but make no representation. Buyers must carry out their own due diligence.

Please note the property has been virtually staged, this is how great it could look!

**4 BED | 2 BATH | 1 CAR**

**PRICE:**  
\$525,000

**OPEN FOR INSPECTION:**  
N/A



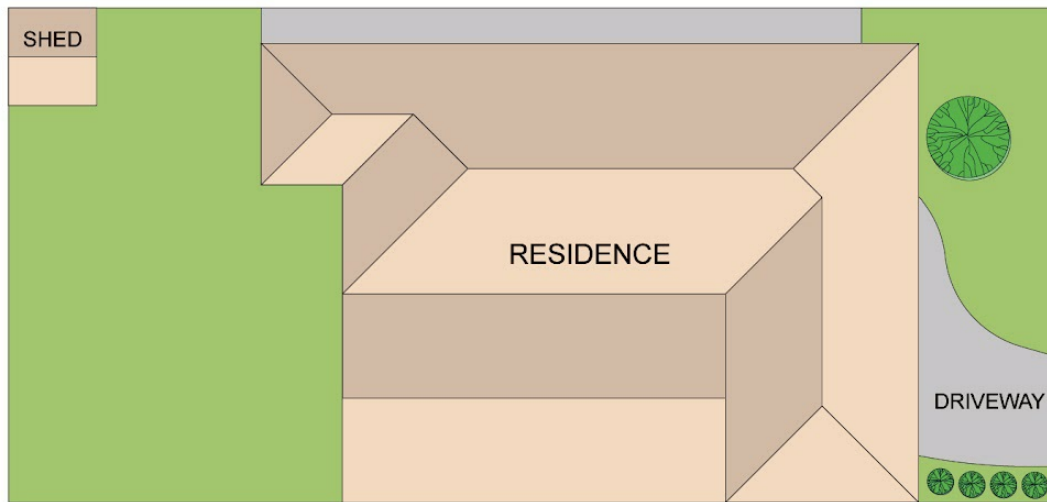
**Mel Ahearn**  
**0409183763**

mahearn@atrealty.com.au

[atrealtypropertysalesgippsland.com.au](http://atrealtypropertysalesgippsland.com.au)



**FLOOR PLAN**



**SITE PLAN**

Disclaimer: Please note this floor plan is for marketing purposes and is to be used as a guide only. All dimensions are estimates only and may not be exact measurements.