

FOR SALE

STUNNING & SPACIOUS ON 1,003 SQM BLOCK!

Unveil a realm of sophistication and tranquility in this stunning coastal home. Upon entering, you'll be enchanted by the harmonious connection of living areas, each illuminated by sunlight pouring in through large windows. The centrepiece of this residence is a spectacular open-concept kitchen and living space, where culinary creations flourish amidst serene garden vistas and a remarkable covered deck, ideal for entertaining and cherished family celebrations.

The home's innovative and distinctive design captures a contemporary coastal vibe, featuring bright white walls, inviting wood accents, soaring ceilings, and bursts of lively color. Luxurious finishes, such as elegant cabinetry, integrated appliances, designer lighting, and custom tiles, enhance each area. The family room offers a soothing retreat with cozy seating and calming artwork, while the bedrooms are equipped with generous storage and peaceful decor.

Each room enjoys the benefits of plantation shutters or shade and blackout blinds, while year-round comfort is assured through ducted heating and reverse cycle air conditioning. Indulge in the luxurious master suite, a private sanctuary featuring a spa-like ensuite and walk-in-wardrobe, while the large family bathroom features a freestanding tub and separate shower. Three additional bedrooms offer versatility, space and storage for family, guests, one of which is currently used as a stand alone office.

Step into a mature verdant garden that serves as an unparalleled retreat—offering both tranquility and privacy, it sets the stage for exceptional alfresco dining experiences. Situated in the highly coveted Jazmine Court and surrounded by other distinguished homes, this residence places you mere moments away from pristine beaches and essential local amenities. Featuring a meticulously designed layout, exquisite fixtures, and a picturesque setting, this residence transcends the notion of a mere house – it beckons you to enhance your lifestyle. Immerse yourself in the seamless blend of coastal allure and contemporary elegance within a home that genuinely inspires.

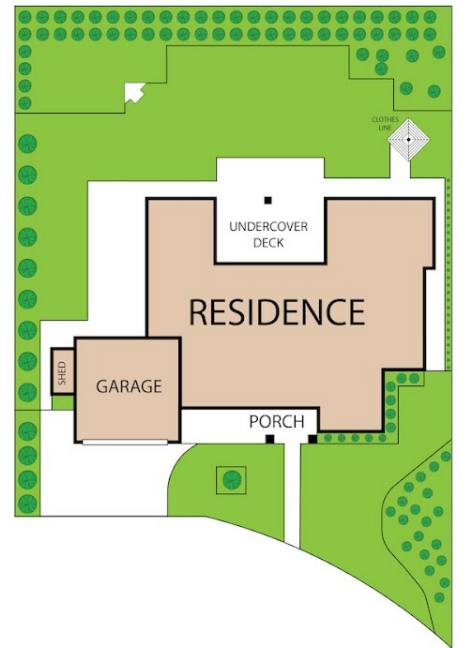
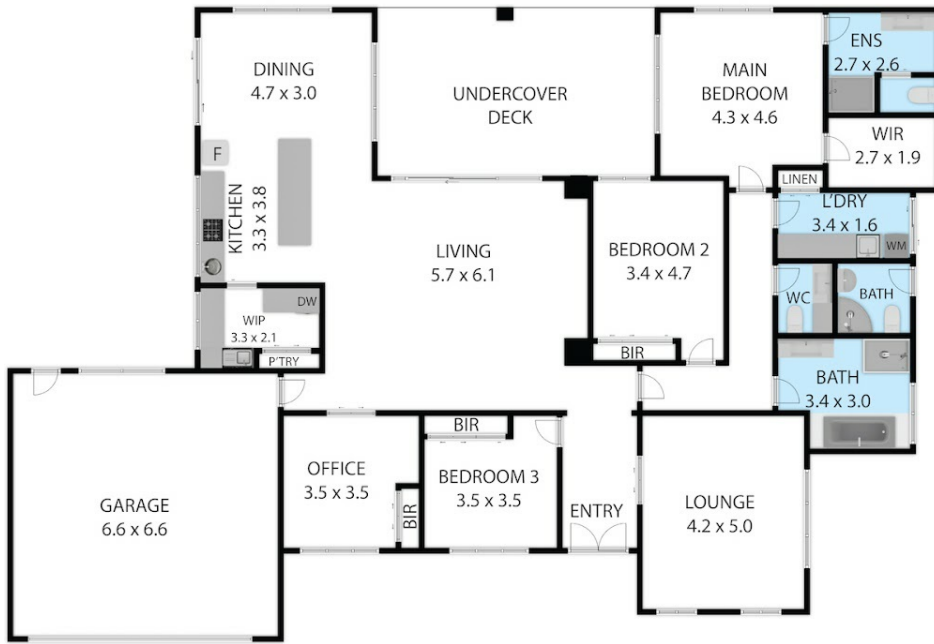
4 BED | 3 BATH | 2 CAR

PRICE:
\$1,065,000 - \$1,095,000

OPEN FOR INSPECTION:
N/A



Leo Edwards
0472523445
leo@atrealty.com.au
www.atrealty.com.au



16-18 Jazmine Court, Inverloch, VIC, 3996

TOTAL APPROX. FLOOR AREA 260 SQ.M

Whilst every attempt has been made to ensure the accuracy of the floor plan contained here, measurements of doors, windows, rooms and any other items are approximate and no responsibility is taken for any error, omission, or misstatement. This plan is for illustrative purposes only and should be used as such by any prospective purchaser.

INVERLOCH
RESIDENTIAL

@realty

Disclaimer: Please note this floor plan is for marketing purposes and is to be used as a guide only. All dimensions are estimates only and may not be exact measurements.

Leo Edwards
0472523445
leo@atrealty.com.au
www.atrealty.com.au

@realty