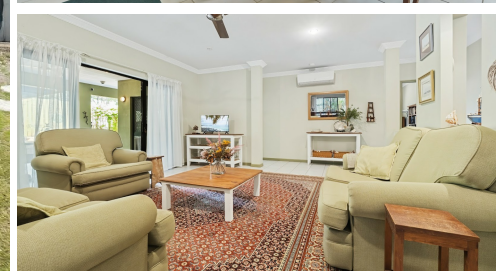


26 PUMILA CLOSE, MOUNT SHERIDAN, QLD, 4868



FOR SALE

SPACIOUS IS THE 'WORD'.... QUALITY IS THE WAY IT IS. LOCATION IS SUPERB... THIS HOME IS FOR YOU AND YOUR FAMILY AND AVAILABLE TO MOVE INTO NOW...

Enter through the double entry doors to a massive living space with formal dining and through to the kitchen / casual dining and onto the patio.

It just keeps going. Four spacious bedrooms, all with built-ins, full length windows for light and breezes, security screens and air-conditioned. The master is huge with doors opening onto two sides of the patio. A well designed en-suite (loads of light) and walk in robe. The second bedroom is ideal as an office or small person's room next to the master. The other two bedrooms are at the front of the house with main bathroom and laundry plus more storage in the massive linen cupboard too.

The kitchen is very functional with a pantry and island bench - ideal for cookbooks, trinkets and more plus a separate room for more storage of appliances etc... Also here is a casual dining area with room for a sofa too spilling onto the patio. Fabulous space and flow through when entertaining family and friends.

Situated on 509m2 of land, the house takes up most of this. However, being at the end of the Close there is extra room at the front for gardens, fruit trees (the best lemon tree already thriving) and room for the kids to play. The pooch can be fenced in at the rear of the house. No neighbours at the rear and no passing traffic.

Located minutes from Mt Sheridan Shopping Centre, the highway south of the city and still only 15minutes to the Cairns CBD. What more could you ask for - a quality spacious home in a great location. For more details, call Kendall anytime on 0417 167 695. Expressions of Interest closing Monday 12.00pm 25 November 2024 - this property will be sold...

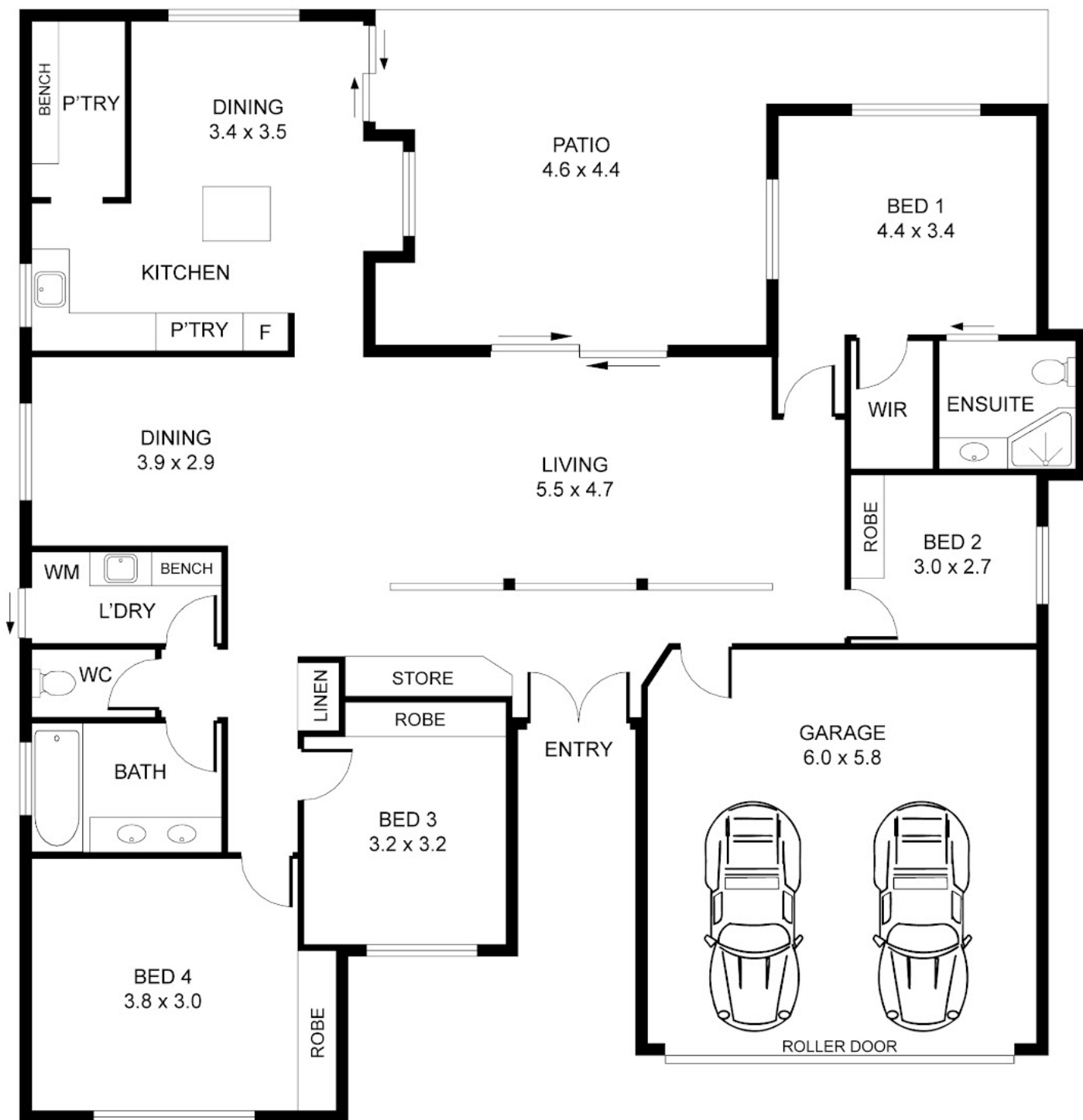
4 BED | 2 BATH | 2 CAR

PRICE:
Exp of Interest

OPEN FOR INSPECTION:
N/A



Kendall Booth
0417167695
kendall@atrealty.com.au
[Kendall Booth Website](#)



Disclaimer: Please note this floor plan is for marketing purposes and is to be used as a guide only. All dimensions are estimates only and may not be exact measurements.

ALL MEASUREMENTS ARE APPROXIMATE AND MAY NOT BE EXACT. DO NOT RELY ON THE ACCURACY OF THIS FLOOR PLAN WHEN DETERMINING THE PRICE OF A PROPERTY OR MAKING DECISIONS REGARDING BUYING OR SELLING OF PROPERTIES WITHOUT INDEPENDENT VERIFICATION. BEDROOM MEASUREMENTS ARE EXTERNAL OF ROBES.