



**SOLD**

## AMAZING COURTYARD UNIT IN THE HEART OF VIBRANT NUNDAH

Real Estate local, Andrew Emms invites your inspection ...

- \* Stylish and modern living in a vibrant pocket of Nundah
- \* This exclusive ground-floor apartment boasts a dedicated master suite
- \* You'll be treated to two bedrooms, two bathrooms and a study area
- \* This unique layout is guaranteed to impress a wide range of buyers
- \* Beautifully tiled throughout with clean, crisp and on-trend finishes
- \* Light-filled and spacious living areas with tall ceilings await
- \* A contemporary cook's kitchen with stone benchtops and stainless steel appliances
- \* Your generous internal living areas spill out to stunning entertainment space
- \* Relish year-round comfort with reverse cycle air-conditioning on offer
- \* Nestled in a quiet cul-de-sac with easy access to everything

This gorgeous ground-floor apartment places you right in the heart of the action with everything Nundah has to offer only moments away. Popular pubs, busy shops, gyms and amenities are all within easy reach ensuring you will never have to travel far.

The spacious and functional floorplan offers a laid-back lifestyle with two good-sized bedrooms and two bathrooms along with a generous living space. Cook up a storm with modern kitchen appliances, including a dishwasher, electric stove and rangehood, plus there's a breakfast bar for relaxed dining.

A seamless flow from the kitchen to the dining and lounge will delight or you can move freely to the covered and tiled entertainer's courtyard and host guests in style. All this is set just moments from a myriad of shopping, dining and entertainment options:

- \* Enjoy Clayfield's shopping and dining offerings
- \* The Nundah Village is a short stroll away with bars, cafes and boutique shops
- \* Skygate offers even more shopping including a 24-hour supermarket

Still craving for more?

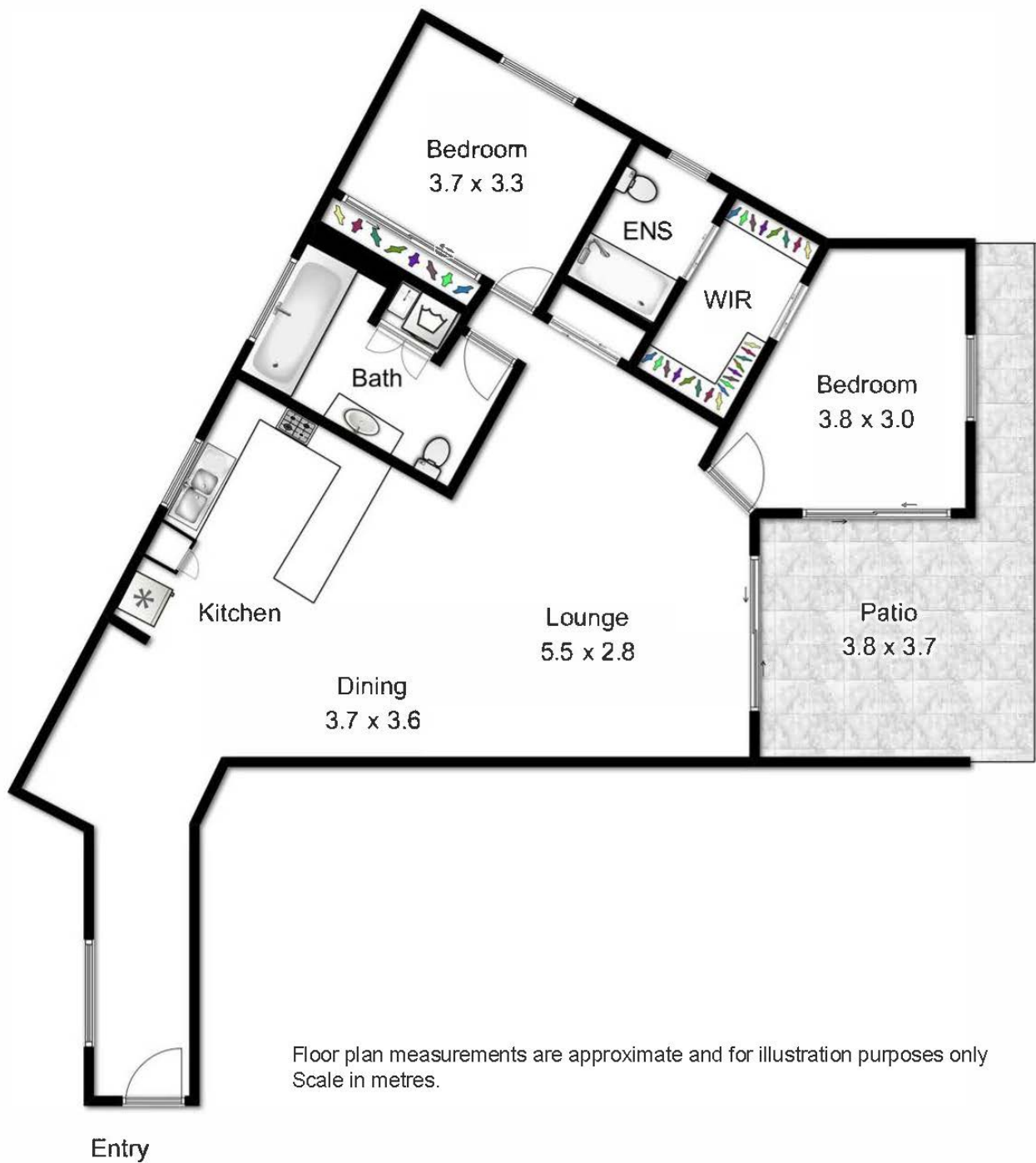
**2 BED | 2 BATH | 1 CAR**

**PRICE:**  
**\$680,000**

**OPEN FOR INSPECTION:**  
**N/A**



**Andrew Emms**  
**0427734743**  
andrew.emms@atrealty.com.au  
[www.atrealty.com.au](http://www.atrealty.com.au)



Disclaimer: Please note this floor plan is for marketing purposes and is to be used as a guide only. All dimensions are estimates only and may not be exact measurements.