

## FOR SALE

### BUY BELOW LAND VALUE! AGENTS WELCOME!

**\*\*Pick up this home at a sharp price, keep your mortgage repayments low, complete a reclad, profit and move onto your next project. This is a plaster home with no cavity system and no CCC. Due to this, buyers will have to do their own due diligence. Great opportunity to pick up a substantial home at a fraction of the cost.\*\***

Welcome to your dream retreat! This beautifully maintained 3-bedroom, 1-bathroom house offers not only a cozy living space but also spectacular views across the picturesque Manukau Harbour.

Step inside to find a charming interior that seamlessly blends comfort and style. With spacious bedrooms and a warm living area, this home is perfect for family living.

Enjoy the serene beauty of the harbour from your own home, making every sunrise and sunset a picturesque moment.

#### FAQ:

Bedrooms: 3  
Bathrooms: 1  
Floor: 140 sqm  
Land: 395 sqm  
Land: Freehold  
Construction: Plaster  
Cooking: Electric  
Zoning: Residential - Single Unit  
Rates: \$3,057.43  
Rental: \$750 pw  
Parking: x2 garage, x1 off street parking  
School zones: Everglade School  
Secondary school zones: Manurewa High School  
CV: \$1,025,000  
Property Documents: Message for info pack.

### 3 BED | 1 BATH | 2 CAR

#### PRICE:

Enquiries Over \$700,000

#### OPEN FOR INSPECTION:

N/A

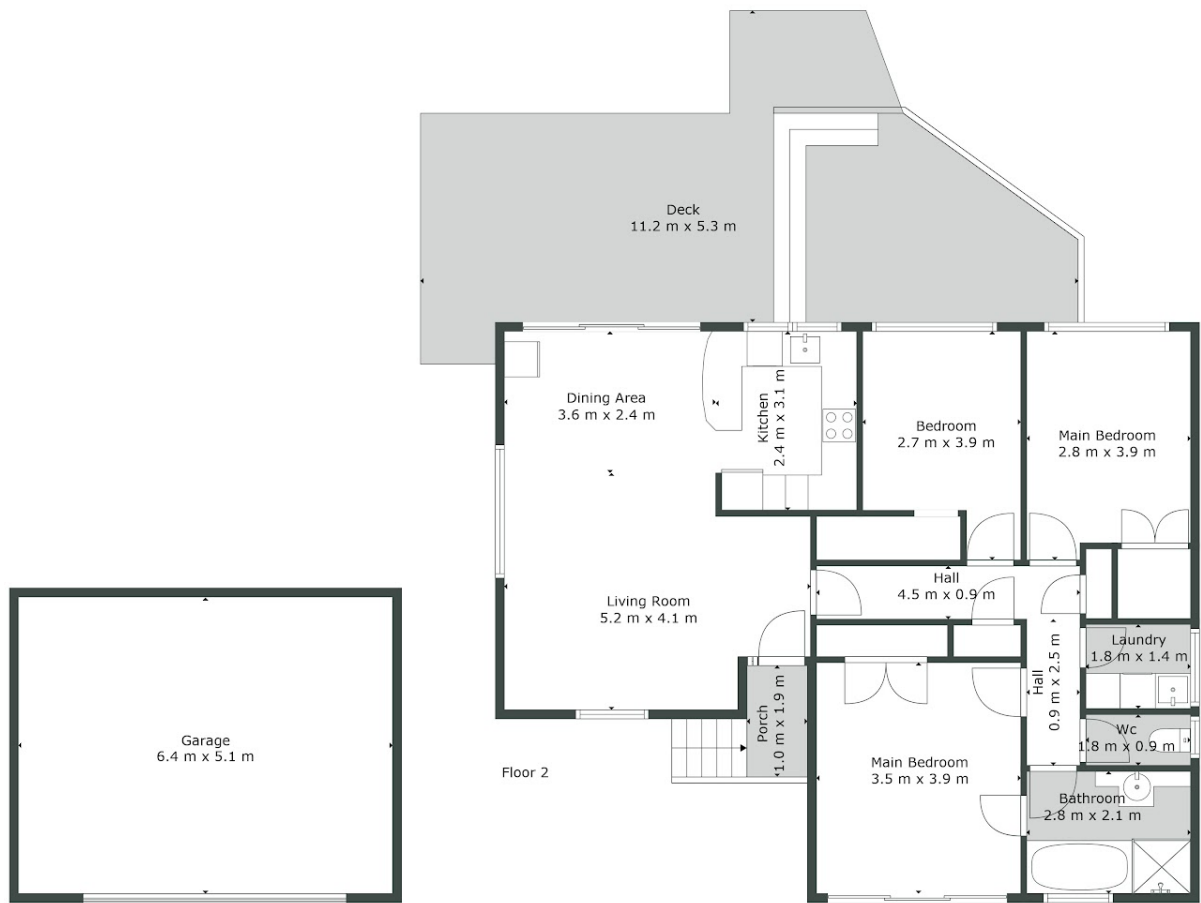


**Todd Sherley**

**021686000**

[todd@eliterealty.net.nz](mailto:todd@eliterealty.net.nz)

[www.eliterealty.net.nz](http://www.eliterealty.net.nz)



Floor 1



Sizes And Dimensions Are Approximate, Actual May Vary.



Disclaimer: Please note this floor plan is for marketing purposes and is to be used as a guide only. All dimensions are estimates only and may not be exact measurements.