



SOLD

LARGE FAMILY ENTERTAINER

This exceptional family home & entertainers delight will amaze you upon entry. For peace of mind this home is fully secure with front entrance remote gate, security cameras & screens. You will be delighted to see the long driveway to rear shed, making this a large hardstand for boat, caravan & cars etc.

The property could easily be utilised to run a business from home with the downstairs features. A wide open floorplan downstairs features durable epoxy flooring & boasts extra storage with mirrored built in cupboards & convenient kitchenette make this perfect for gaming / bar room. Then easily flows into another two rooms, one suitable for office space and the other as storage. Beautiful internal staircase leads you upstairs to the living areas with polished timber floors in perfect condition.

Dining room leads out to a fully covered outdoor deck which then overlooks a sparkling inground swimming pool.

Separate kitchen offers dishwasher included with appliances and bathroom is beautifully fully renovated. Nothing to do but move in & enjoy this stunning property.

Situated in popular suburb of Mount Louisa which is close to all amenities, Doctors surgery, pathology, Private & public schools. The local shops are walking distance and only a minutes drive to Domain Central which is Townsville's Premier Outlet Shopping destination.

Upstairs features

- 4 bedrooms all with built-in wardrobes & air-conditioning
- Modern bathroom
- Polished floors
- Large airconditioned living/dining
- Internal staircase
- Large rear deck which overlooks the backyard pool

Ground floor features

- Rumpus room
 - Office, storeroom & NBN connected
 - Second toilet
 - Kitchenette
 - Loads of storage
- Outside features
- Large swimming pool
 - BBQ area

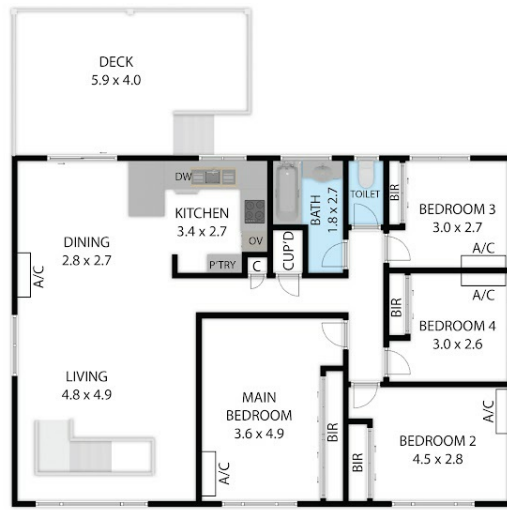
4 BED | 1 BATH | 1 CAR

PRICE:
\$585,000

OPEN FOR INSPECTION:
N/A



Grant Davison
0413984703
gdavison@atrealty.com.au
davisonatrealty.com.au



FIRST FLOOR



GROUND FLOOR

17 Davies Street, Mount Louisa, QLD, 4814

TOTAL APPROX. FLOOR AREA 198 SQ.M

Whilst every attempt has been made to ensure the accuracy of the floor plan contained here, measurements of doors, windows, rooms and any other items are approximate and no responsibility is taken for any error, omission, or misstatement. This plan is for illustrative purposes only and should be used as such by any prospective purchaser.

Disclaimer: Please note this floor plan is for marketing purposes and is to be used as a guide only. All dimensions are estimates only and may not be exact measurements.