



FOR SALE

WOW!!! CHECK OUT THESE BREATHTAKING VIEWS

Have you dreamt of living on the edge of a Mountain with an ever changing view to the Gold Coast and Border Ranges?....well, this is the perfect home for you. This solid hardwood 1960's Queenslander, offers modern conveniences with a touch of classic charm. There are high ceilings, timber floors and a slow combustion fire for those cosy Winter Mountain days/nights, a large eat-in kitchen, a glassed in living room that leads out onto the deck overlooking the Gorge, there could be no better place to relax and entertain.

Property Features;

- * Three spacious bedrooms with natural light
- * Well appointed bathroom
- * Spacious eat in kitchen
- * Sunroom/Living room overlooking the deck
- * Covered entertaining deck with views through the Gorge to the Gold Coast and Pacific Ocean
- * Full concrete driveway, parking for 2 cars, with room to add a carport if you wish
- * Excellent water storage 3x 18,000 litre poly tanks, 54,000 Total
- * Easy care retained garden spaces with a large fig tree 2x Avocado trees, and several Citrus trees
- * Garden shed with secure lock up to keep your garden tools tucked away
- * Quick access to the local Golf Course
- * On the school bus run
- * 30 minute drive to Nerang Rail, Helensvale Rail, Motorway and Major Shopping
- * Close proximity to local shops, cafes, the historic St Bernards Hotel, and Organic Farm Shop (The Nosey Gnome)
- * Easy access to our beautiful local rainforest walks and National Parks, perfect for outdoor enthusiasts

Don't miss this opportunity to own your own slice of paradise, you could be forgiven for never wanting to leave the house.

Contact me today to arrange a viewing and experience the charm of this home for yourself.

Disclaimer.

The information above is provided with the intent to furnish users with general information

3 BED | 1 BATH | 0 CAR

PRICE:

Offers over \$899,000

OPEN FOR INSPECTION:

N/A

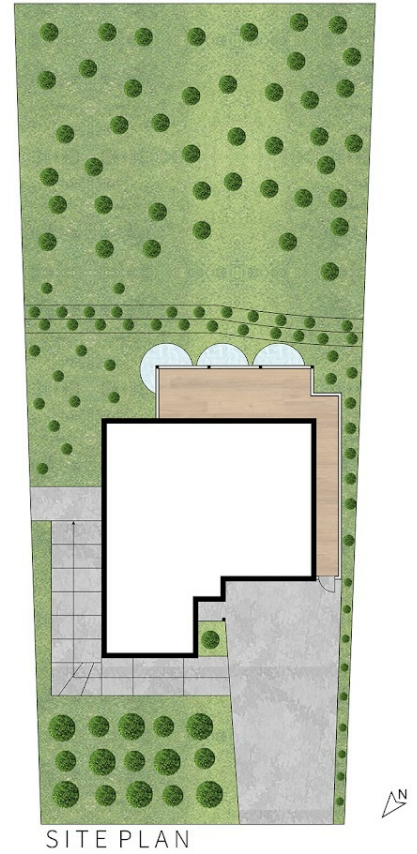


Cherie Todd

0411466442

cherie.todd@atrealty.com.au

www.atrealty.com.au



50 Coomera Gorge Drive, **TAMBORINE MOUNTAIN**



PLEASE NOTE THIS PLAN IS FOR MARKETING PURPOSES AND IS TO BE USED AS A GUIDE ONLY. ALL MARKINGS, MEASUREMENTS, AREAS, AND LAYOUT ARE INDICATIVE ONLY AND INTERESTED PARTIES SHOULD MAKE THEIR OWN ENQUIRIES BEFORE MAKING ANY DECISIONS. FLOOR COVERINGS INDICATED ARE FOR ILLUSTRATIVE PURPOSE AND MAY NOT ACCURATELY PORTRAY ACTUAL FLOOR COVERINGS OF THE PROPERTY. EZ REALITY PHOTOGRAPHY MAKES NO GUARANTEES REGARDING THE INFORMATION CONTAINED IN THIS PLAN AND ACCEPTS NO LIABILITY FOR ANY INACCURACIES.

Disclaimer: Please note this floor plan is for marketing purposes and is to be used as a guide only. All dimensions are estimates only and may not be exact measurements.