



FOR SALE

GOLDEN OPPORTUNITY!

You won't want to miss out on this unique family home on a whopping 701m2 Green Title Block! Offering multiple living spaces inside & out, super large master suite, all year comfort with ducted heating & cooling, plus a cozy wood heater, stunning timber floors, lovely high ceilings, country vibe kitchen, renovated bathrooms & laundry, lush gardens and the Golden Opportunity - a MASSIVE 6m x 9m double lock up shed with remote garage doors, perfect for Tradies, car enthusiasts or a savvy owner to rent out as secure storage!

Surrounded by quality homes & within close proximity to schools, shops, parks & transport, this is one home not to be missed!

FEATURES INCLUDED:

- Master bedroom is King size with generous BIR'S, ensuite with double shower, spa bath, toilet
- Bedrooms 2,3,4 all with BIR's
- Family bathroom is tastefully renovated with floor to ceiling tiling, separate bath to shower, separate toilet
- Theatre room is extra generous in size with remote movie screen, ceiling mounted projector
- Country vibe kitchen with attractive tiled splashbacks & cupboards & draws a plenty! Big pantry, Kleenmaid double wall oven, gas hob, Samsung dishwasher, double sink, large bench space, double fridge recess & convenient shoppers entrance from garage
- Dining/Family room with stunning solid timber floorboards, high ceilings with skylight, Norseman slow burning wood fire to enjoy cozy winters
- Dining area effortlessly accommodates a 12 seater table!
- Lounge room has plenty of room for family size lounge suite & large tv
- Bonus Sunroom with wooden flooring opening out to alfresco
- Big family size laundry with lots of storage
- Extra wide tiled entrance, security screen & entrance door
- Multi-zoned Fujitsu ducted reverse cycle air conditioning throughout
- Money saving 5KW Solar Panels
- NBN installed
- Dux Prodigy Gas hot water system
- Alarm, security roller shutters to front bedrooms, security screens throughout
- Triple driveway with room for caravan or a boat
- Double remote garage with shoppers' entrance
- Massive shed with two separate remote roller doors, work benches, sink with hot water, a loft

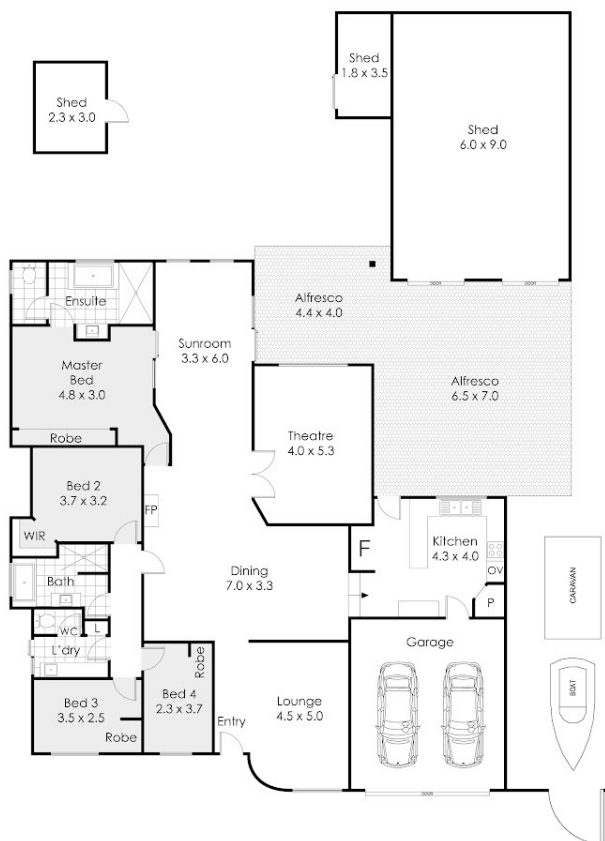
4 BED | 2 BATH | 4 CAR

PRICE:
HIGH \$800's

OPEN FOR INSPECTION:
N/A



Jill Groves
0408765240
jillgroves@atrealty.com.au
www.atrealty.com.au



37 Heathfield Drive, Landsdale

This floor plan is not to scale.
Dimensions are approximate and therefore should only be used for illustrative purposes.



373 m²
4 Bed
2 Bath
2 Car

Disclaimer: Please note this floor plan is for marketing purposes and is to be used as a guide only. All dimensions are estimates only and may not be exact measurements.