



SOLD

SENSATIONAL ABSOLUTE WATERFRONT ON THORA - REDUCED TO SELL!!

Wright Way Realty Jervis Bay presents a perfect getaway for any boating enthusiast, or those just seeking sincere solitude from their busy lifestyles! This well presented 4/5-bedroom home is the perfect blend of functionality, serenity, comfort, and located in the scenic coastal town of Sussex Inlet. With its breathtaking natural surroundings and welcoming community, this property offers a lifestyle that is second to none.

- @ Single storey home with your very own private Jetty, slipway, and winch
- @ Direct boat access to both St Georges Basin and/or the Pacific Ocean
- @ Two sandy white beaches means water activities and family fun are a breeze
- @ The hexagonal kitchen is the centrepiece of this home with amazing water views
- @ Living spaces are filled with natural light, creating a warm and inviting atmosphere
- @ Main bedroom choices - with either WIR and en-suite, or magnificent water views
- @ Large Bi-fold doors open the home to nature, and a huge merbau entertainers deck
- @ The theatre room is tucked away from the entertainment and other living spaces
- @ Storage spaces galore to keep your home clutter-free and organized
- @ Double drive through garage offers secure storage and water access
- @ Covered courtyard/ BBQ area to entertain is protected from wind and rain
- @ A gentle, level 10-minute stroll to the village, cafes, cinema, bakeries, and more
- @ Quiet 'no through street' with lovely parkland at the end of the cul-de-sac
- @ 7.9k/w solar panels and ducted reverse cycle air-conditioning throughout
- @ Sensational sunsets all year round, but especially in autumn and spring

@ Call Glenn right now and escape to your dream home in beautiful Sussex Inlet

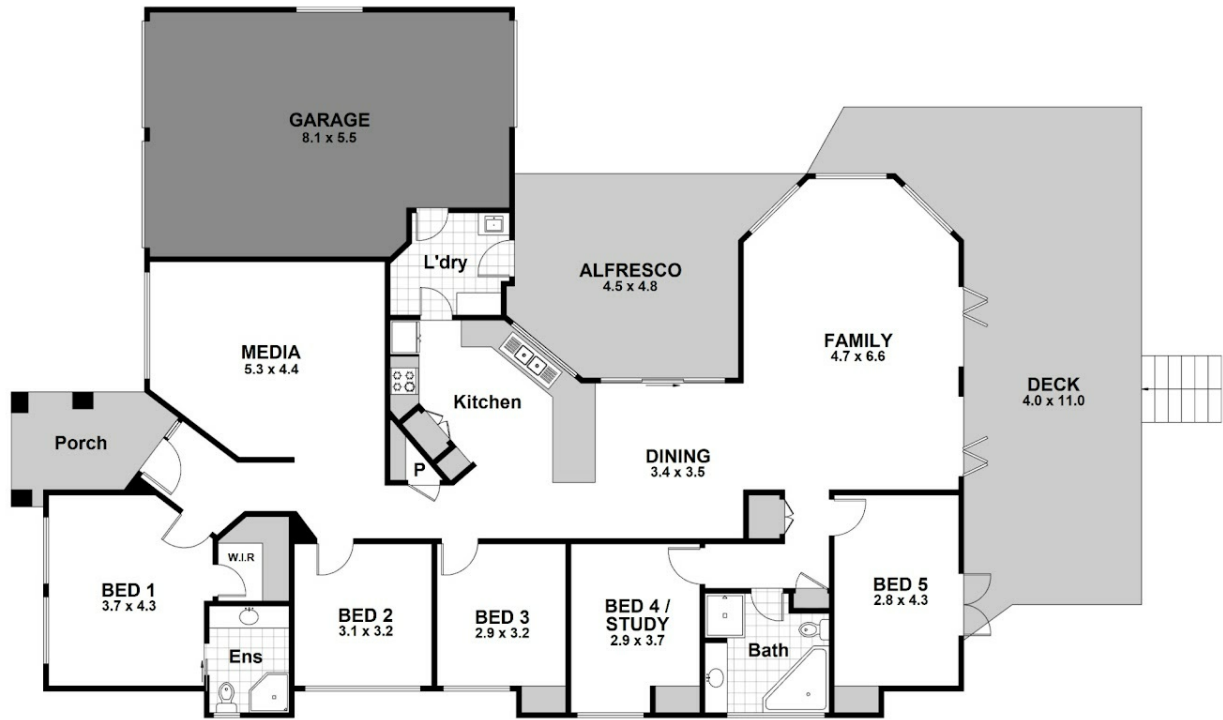
4 BED | 2 BATH | 2 CAR

PRICE:
\$1,470,000

OPEN FOR INSPECTION:
N/A



Glenn Wright
0408120866
glenn.wright@atrealty.com.au
Wright Way Realty



19 Thora Street, SUSSEX INLET



Scale is in Metres & indicative only & dimensions are only approximate.
 The information contained & gathered herein is we believe from sources to be reliable.
 We can not guarantee it's accuracy & persons should rely on their own enquiries.

WRIGHTWAY
realty

@realty

Disclaimer: Please note this floor plan is for marketing purposes and is to be used as a guide only. All dimensions are estimates only and may not be exact measurements.