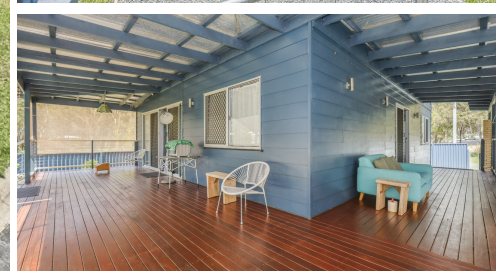


15 JASPER STREET, RUSSELL ISLAND, QLD, 4184



FOR SALE

NORTH END OF ISLANDCLOSE TO EVERYTHING.. EAST SIDE WITH WATER GLIMPSES TO NTH,STRADBROKE ISLAND PRICE JUST REDUCED BY VENDOR...!!!

Fully fenced home on flat block , sealed road , minutes to shops and ferry..
Large open plan living/dining with corner kitchen (dishwasher) ,leading out onto full width rear deck overlooking established back yard..
Spacious main bedroom ,semi en-suite plus study (2nd bedroom)
Tandem two car carport , water tank .solar panels and fully fenced yard

2 BED | 1 BATH | 1 CAR

PRICE:
\$418,000

OPEN FOR INSPECTION:
N/A



Juri Karter
0413439933
bayislands@atrealty.com.au
www.atrealty.com.au