



# FOR SALE

## GRAND HOME IN A GREAT LOCATION WITH EXTRA FEATURES AND EXQUISITE FINISHES

SELF CONTAINED GRANNY FLAT + SPARKLING INGROUND POOL + SIDE ACCESS

Centrally located to the amenities ( East of Bloomfield street ) and offering Dual living potential , this oversized home with almost 50 squares of living is ideal for multi-generational and extended families. The architectural symmetry , landscaped gardens and attractive topiary creates some nice street appeal whilst the aristocratic features like the spiral stair case , circular columns and beautiful chandeliers add some real class.

The house proud owners have maintained the home in great condition and it has been recently refurbished - the owners have done all the work for you and spared no expense - just move in and unpack before Easter ! Spacious and stylish , the home has a whole host of extra features and fittings including :

- \* New kitchen benchtops
- \* Media room + powder room
- \* New carpets & freshly painted inside and out
- \* Ducted , Zoned Aircon
- \* 44 solar panels with 10 kw inverter
- \* Plenty of storage throughout

The portico , manicured gardens and courtyard at the front create an impressive grand entrance whilst the greenery in the backyard ensures privacy for the pool and entertainment area. The high ceilings and large rooms emphasise how spacious the home is and the open plan style allows it to seamlessly flow from top to bottom. The home has a massive master bedroom and large ensuite with jacuzzi upstairs whilst downstairs the potential self-contained granny flat has a separate entry/exit leading to access from the side street. With so much more to explore and discover an inspection really is required to fully appreciate what this home has to offer.

Options & Benefits :

- \* Two street frontage and side access
- \* Multiple entertainment areas

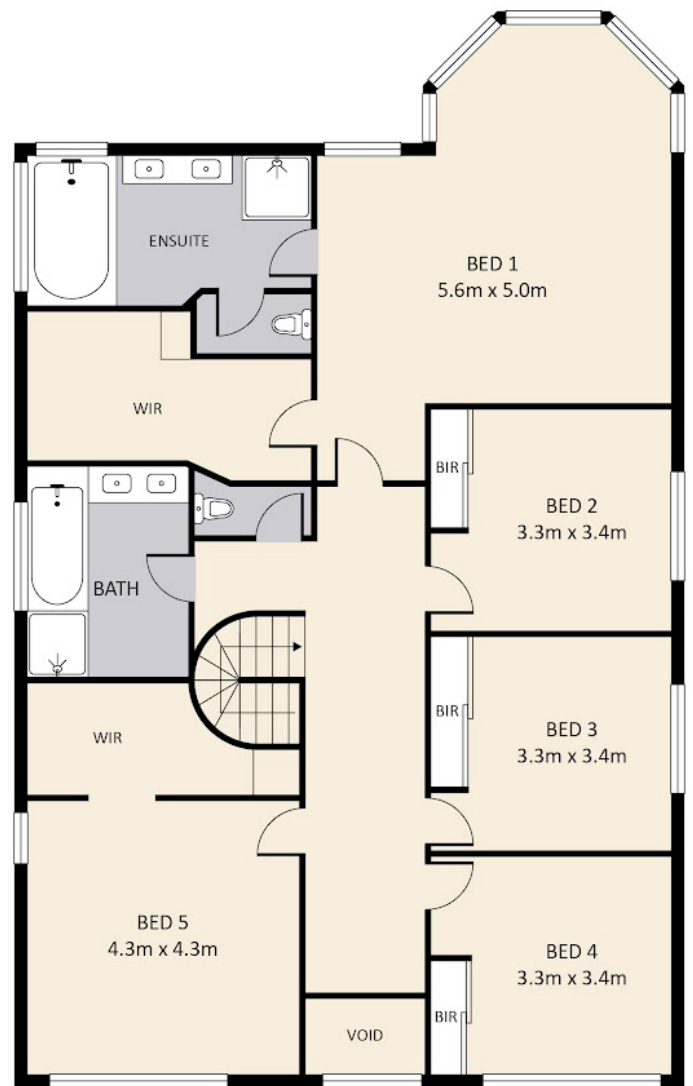
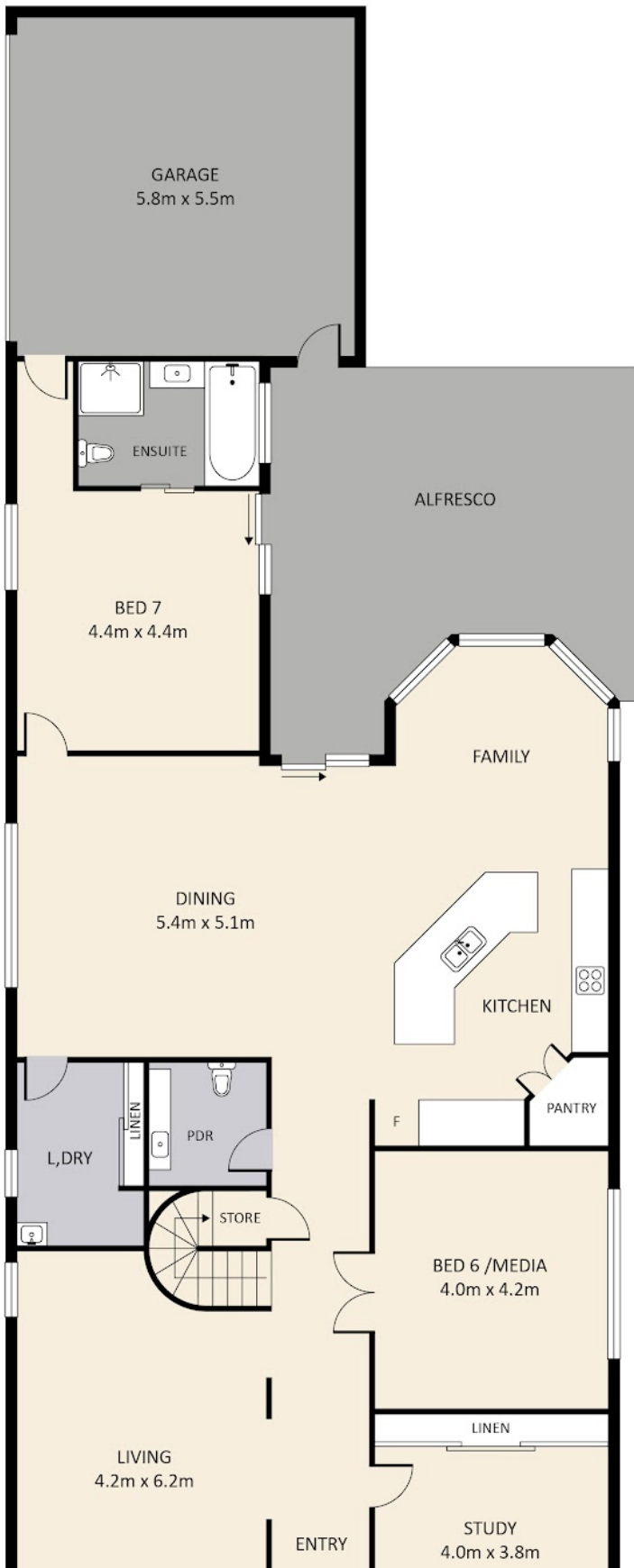
7 BED | 4 BATH | 6 CAR

PRICE:  
UNDER CONTRACT

OPEN FOR INSPECTION:  
N/A



**Gok Siva**  
**0435654672**  
gok@atrealty.com.au  
[www.atrealty.com.au](http://www.atrealty.com.au)



FIRST FLOOR

Disclaimer: Please note this floor plan is for marketing purposes and is to be used as a guide only. All dimensions are estimates only and may not be exact measurements.

GROUND FLOOR

Disclaimer: Floor plan measurements are approximate and for illustrative purposes only.