



FOR SALE

EXCEPTIONAL OPPORTUNITY WITH ENDLESS POTENTIAL- INVESTMENT, MEDICAL CENTRE, FAMILY HOME ON 1116M2

Nestled in a prime location, this original Newborough home embodies the essence of sought-after attributes, offering an exceptional opportunity for prospective buyers. With its strategic positioning and myriad of possibilities, this property stands out as a unique and valuable proposition.

Occupying a generous block that spans approximately 1116m2, the property provides ample space for various enhancements. Whether you envision building a massive shed, extending the existing home, or even redeveloping to construct a second dwelling (Subject to Council Approval), the options are abundant and promising.

The original brick home, with three bedrooms plus 1 bedroom Bungalow, has been diligently maintained. This dedication to upkeep ensures that the home retains its charm and functionality, making it a perfect canvas for further personalization or renovation.

Equipped with new split system air conditioning and heating in every room, the home promises comfort throughout the seasons. Complete with Solar system and Battery. These modern amenities enhance the living experience, providing a cozy and welcoming environment for its residents.

The property features a Colourbond garage, complemented by an additional carport, ideal for housing a caravan or boat. This ample parking space caters to the needs of families with multiple vehicles or those who enjoy recreational activities.

Situated near Newborough Village amenities and with public transport almost at your doorstep, this home offers unparalleled convenience. The proximity to essential services and transport links adds to the property's appeal, making everyday living effortless and enjoyable.

This charming Newborough home is more than just a residence; it is a testament to enduring quality and infinite possibilities. Whether you are looking to invest, renovate, or build anew, this property presents an excellent proposition to realize your vision.

4 BED | 1 BATH | 2 CAR

PRICE:

\$495,000 - \$520,000

OPEN FOR INSPECTION:

N/A

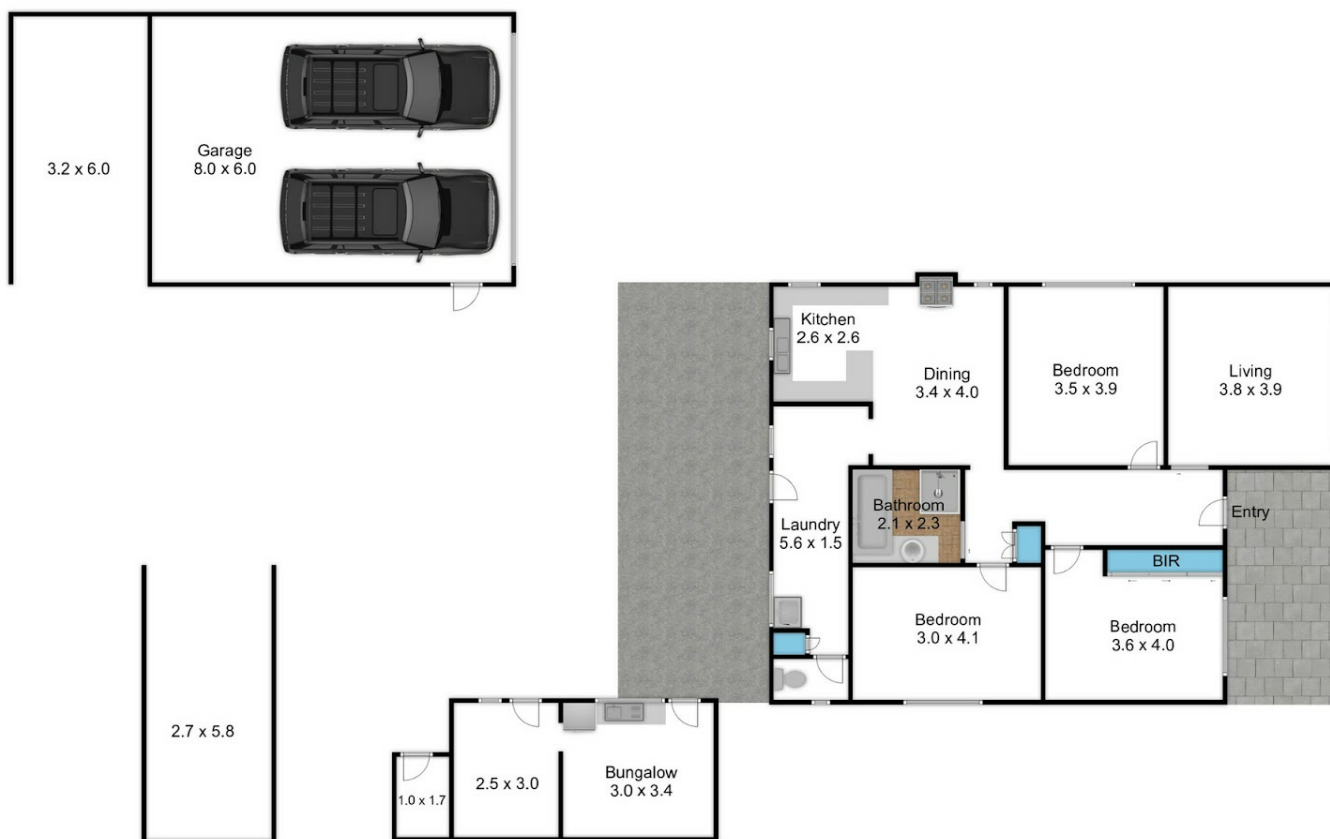


Melissa Ahearn

0409183763

mahearn@atrealty.com.au

atrealtypropertysalesgippsland.com.au



Disclaimer: Please note this floor plan is for marketing purposes and is to be used as a guide only. All dimensions are estimates only and may not be exact measurements.