



FOR SALE

LOCATION, LOCATION!!

Step inside and be swept away by the spacious layout of this 3-bedroom, 1-bathroom house. With a generous floor area of 106 square meters, there is plenty of room for you and your loved ones to live, play, and relax. The house is situated on a generous 617 square meters of land, giving you ample outdoor space to enjoy.

2 bedrooms are generously sized bedrooms, the 3rd bedroom is a double bedroom could be a guest room or an office. The large windows double glaze windows that allow natural light to flood in, creating a warm and inviting ambiance. It has a newish roof and most of the weatherboard has been replaced.

The living areas are the heart of this home, open-plan design allows for seamless flow between the living, dining, and kitchen areas, making it perfect for entertaining guests or spending quality time with your family.

One of the best things about this house is it's the amazing location. And if you need to venture into the city, no problem! The property is conveniently located just a short drive from and to South City Center, allowing you to easily access all the amenities and services you need.

Don't miss out on this once-in-a-lifetime opportunity to own your dream home in Kingswell opposite Kew Hospital. Contact us today to arrange a viewing and get ready to fall in love with this amazing property. Hurry, this won't last long!

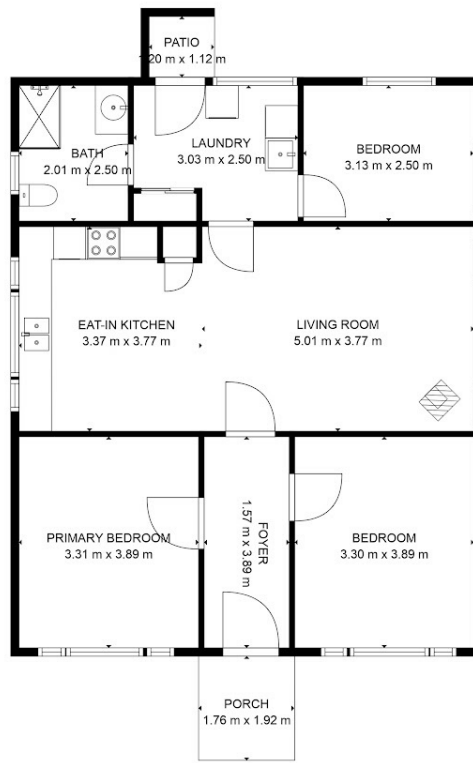
3 BED | 1 BATH | 1 CAR

PRICE:
Enquiries Over \$339,000

OPEN FOR INSPECTION:
N/A



Randa Nicol
0211797786
randa@nicolrealty.co.nz
www.nicolrealty.co.nz



445 Elles Road
kingswell



For Visual Purpose Only

Drawings are approximate and to be used for visual representation only. Measurements should be verified by the buyer. We take no responsibility for omissions and errors. This floorplan is provided without warranty of any kind. Sensopia disclaims any warranty including, without limitation, satisfactory quality or accuracy of dimensions.

Floor Plan by INSPIRE MEDIA WORKS

Disclaimer: Please note this floor plan is for marketing purposes and is to be used as a guide only. All dimensions are estimates only and may not be exact measurements.