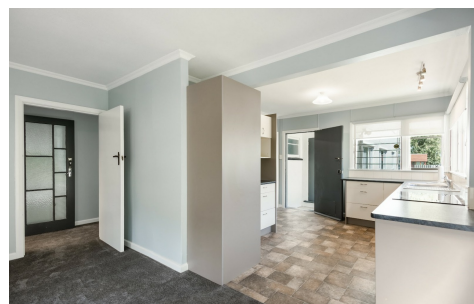


10A BLEDISLOE AVENUE,  
STOKE, NELSON, **NELSON / TASMAN**



**SOLD**

**FIRST HOME, GREAT LOCATION!**

3  | 1  | 1 

Bigger than you would expect and with a flexible layout offering a variety of options, this perfectly located unit in a great area of Stoke makes the ideal first home or rental investment and is great value buying in this price range.

The central dining and living area features a sunroom which expands the living space and the wood fire is ideally positioned to warm the whole home. The combination of a single bedroom/office and a separate lounge leading off this area allows you the option of using either room as a third bedroom depending on your needs.

The 2 bigger bedrooms offer built in furniture, the large internal access garage provides plenty of secure storage and the bathroom and kitchen have both been modernised. The home is well insulated and having been newly renovated including new carpet and paint throughout, there's very little needing to be done here. Just add your own landscaping touches to the fully fenced section and you'll be happy here for many years to come.

Get in quick because at this price, it won't be here for long! Offers over \$550,000 considered.

Ben Cooper | 0212557751 | [ben@changerealestate.co.nz](mailto:ben@changerealestate.co.nz) | [changerealestate.co.nz](http://changerealestate.co.nz)

