**SOLD**

"EXPERIENCE MODERN LIVING IN THE HEART OF GRIFFIN!"

Welcome to your dream home in the beautiful and vibrant suburb of Griffin, 23 Spearmint Street proudly presented to you by ARUN CHHIKARA TEAM from Maya Realty who will be assisting you during your purchase.

This spacious freshly painted with natural colours 4 bedroom, 2 bathroom house is the perfect place to call home for a lucky buyer. With a low maintenance yard and a generous floor area, this property offers the perfect balance of space and functionality.

The 4 bedrooms are all generously sized, providing plenty of space for everyone to call their own. The master bedroom boasts a built-in wardrobe and a luxurious en-suite bathroom, creating a private oasis for you to retreat to at the end of a long day. The additional bedrooms are perfect for children, guests, or even a home gym, the possibilities are endless.

Upon entering the house, you will be greeted by a spacious and airy floor plan, perfect for entertaining and spending quality time with loved ones. The open living and dining area boasts plenty of natural light, creating a warm and welcoming atmosphere. The indoor features include a rumpus room, ideal for a media room or additional living space. The kitchen is a chef's dream, with modern appliances, ample storage space, and a breakfast bar, making it the heart of the home.

PROPERTY FEATURES:-

- Freshly painted beautiful home
- 4 Spacious bedrooms
- Master bedroom with walk in wardrobe and ensuite
- Three additional bedrooms with built in wardrobes
- Separate Living room/Guest room
- Main bathroom with separate bath and shower
- Open plan living/dining area
- Modern kitchen with stone benches, stainless steel electric appliances, dishwasher
- Plenty of cupboard & bench space
- New carpet throughout
- Split Air-conditioning units
- Separate laundry with access to backyard
- Separate toilet

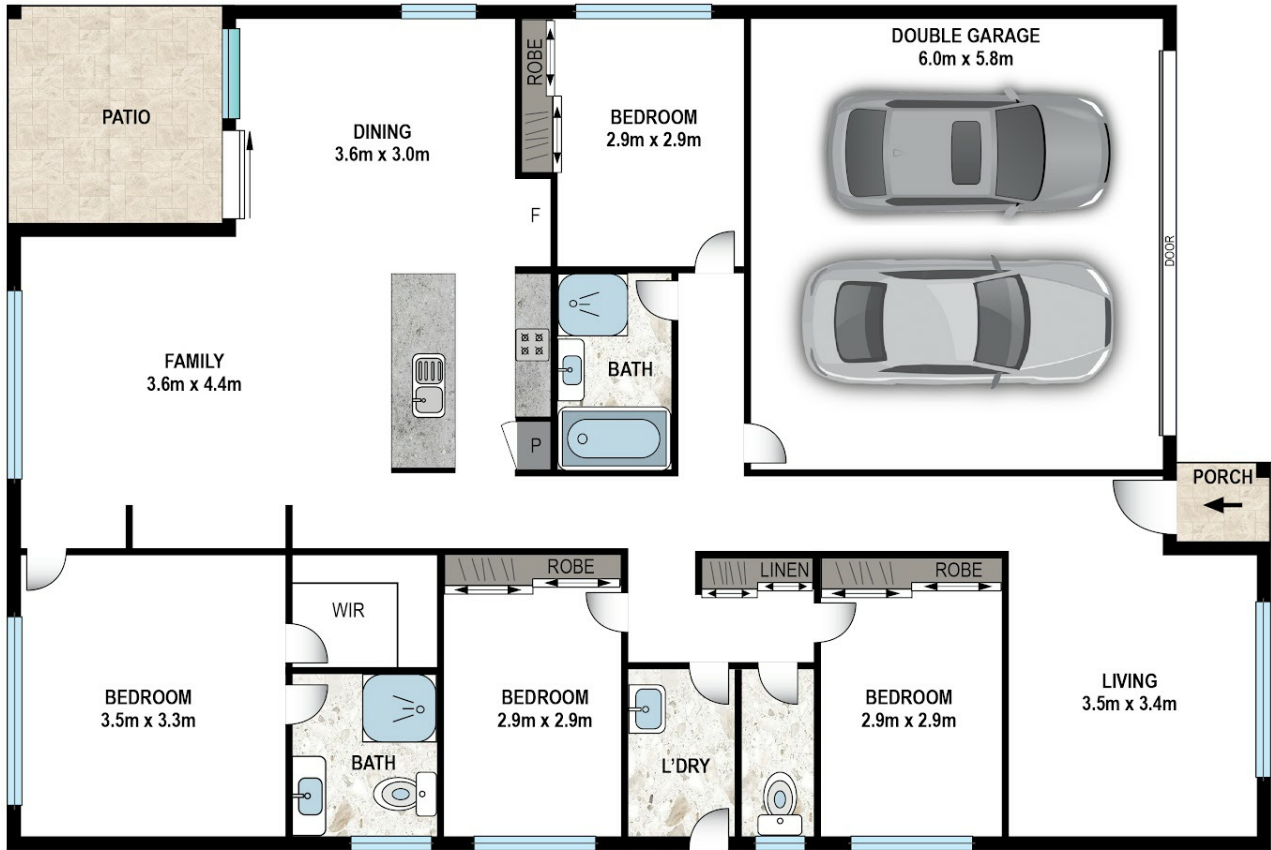
4 BED | 2 BATH | 2 CAR


PRICE:
\$984,000

OPEN FOR INSPECTION:
N/A



Arun Chhikara
0427860066
arun@mayarealty.com.au
Maya Realty



 4 Bed
  2 Bath
  2 Car



Scale in meters. Indicative only. Dimensions are approximate. All information contained here in is gathered from sources we believe to be reliable. However we cannot guarantee its accuracy and interested persons should rely on their own enquiries.



23 Spearmint St, Griffin

Disclaimer: Please note this floor plan is for marketing purposes and is to be used as a guide only. All dimensions are estimates only and may not be exact measurements.