



SOLD

SECURE AND GENEROUS ENTRY WITH ELECTRIC GATES

Your Dream Home Awaits Welcome to this enchanting family home, poised to capture your heart the moment you step through its doors. A haven of sophistication and warmth, this residence offers the perfect blend of modern amenities and timeless charm, making it an ideal sanctuary for families seeking both luxury and comfort. As you approach the home, the immaculately landscaped front gardens set the tone for what lies within. The large entryway beckons you inside, where split levels guide you to the spacious formal lounge. Here, hardwood floors gleam underfoot, and the bay front windows provide a stunning panoramic view of the manicured gardens. This is a space designed for relaxation and refined entertaining, where every detail speaks of quality and elegance. The master suite is a true retreat, featuring a generously sized walk-in robe and an en suite that exudes luxury. The thoughtful design ensures privacy and comfort, making it a perfect haven after a long day. Additionally, this section of the home includes internal access from the garage and a versatile room that can serve as a study or a fourth bedroom, catering to the diverse needs of modern family living. The heart of the home is undoubtedly the open kitchen, family, and dining area. This expansive space is perfect for hosting gatherings, with ample room for both intimate family meals and larger celebrations. The kitchen, boasts an abundance of bench space and storage, along with new appliances that will delight any culinary enthusiast. This is not just a kitchen; it is a space where memories are made, where the aroma of home-cooked meals fills the air, and where the cook of the home will find endless joy and inspiration. Adjacent to the living area are the remaining bedrooms, all thoughtfully designed to provide comfort and tranquility. The main bathroom, equipped with a corner spa, serves these bedrooms, offering a touch of luxury and convenience. Whether it's for a quick morning routine or a leisurely evening soak, this bathroom caters to all needs with style and grace. The home is equipped with wood heater, ducted heating and split system cooling, ensuring a comfortable environment throughout the year. Outside, the long back veranda is a standout feature. Covered and fully enclosed by pull-down screens, it is a versatile space that can be enjoyed regardless of the weather.

4 BED | 2 BATH | 5 CAR

PRICE:
\$1,350,000

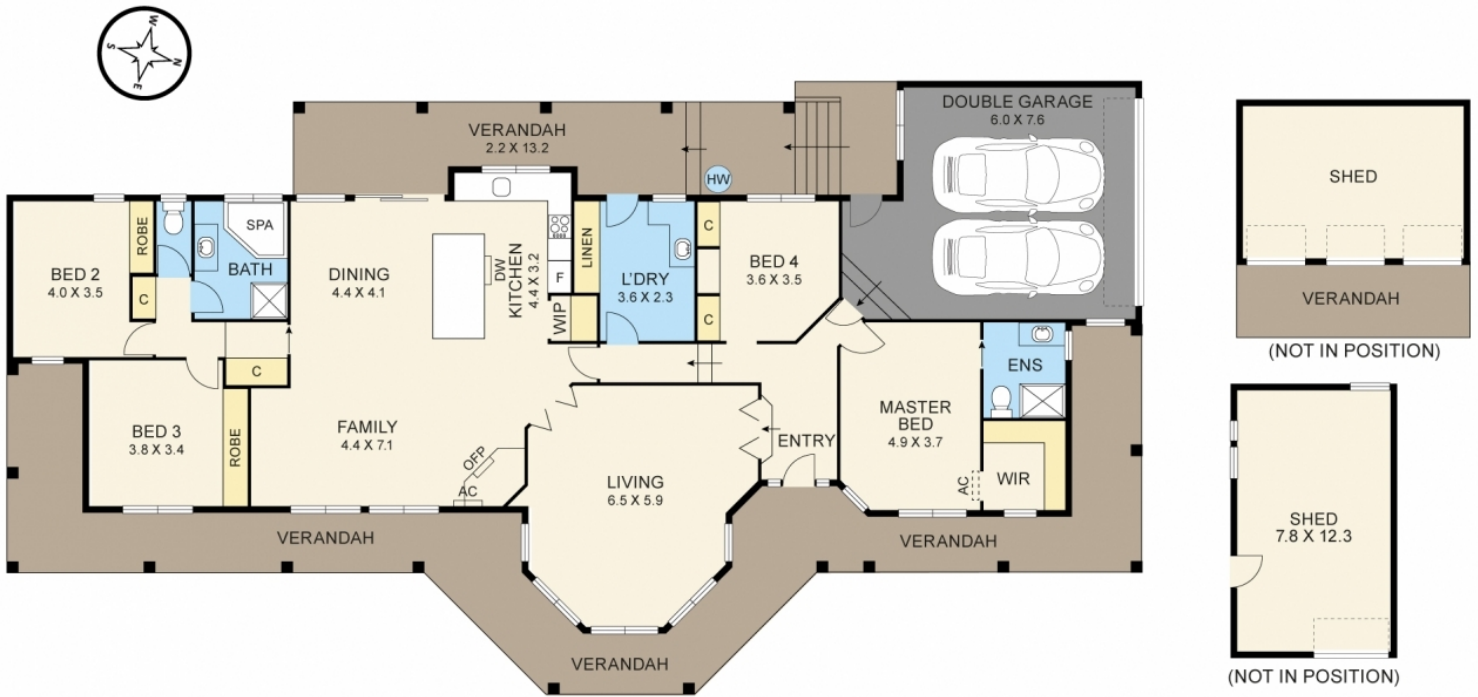
OPEN FOR INSPECTION:
N/A



Mel Ahearn
0409183763

mahearn@atrealty.com.au

atrealtypropertysalesgippsland.com.au



FLOOR PLAN



SITE PLAN

4 PEPPERELL DRIVE, DROUIN

Disclaimer: Please note this floor plan is for marketing purposes and is to be used as a guide only. All dimensions are estimates only and may not be exact measurements.