

14 ARLINGTON COURT CORINELLA



FOR SALE

CHARMING COASTAL COTTAGE IN BEAUTIFUL CORINELLA – INCREDIBLE VALUE

Discover the irresistible charm of this delightful two-bedroom cottage, perfectly nestled in the heart of Corinella! Set in a peaceful, picturesque location, this property is your gateway to the relaxed coastal lifestyle you've been dreaming of.

Cozy, Comfortable and Ready to Enjoy! Step inside and be greeted by a bright and inviting living space, complemented by brand-new carpets throughout the living area and both bedrooms. The original kitchen is full of character, ideal for whipping up meals after a day exploring the coast. With a central bathroom and a convenient separate laundry, everything you need for comfortable living is at your fingertips.

Embrace the Outdoor Lifestyle! Imagine starting your mornings on the back deck, soaking in the serene views of local birdlife and glimpses of the sparkling water beyond. This property is perfectly positioned to take advantage of Corinella's coastal wonders. Explore scenic walking and biking trails, fish from the local jetty, or launch your boat for an exciting day on the water. The nearby community amenities are second to none: enjoy a coffee at the Fig & the Bay Café, stock up at the General Store, or engage with the vibrant local scene at the Community Centre.

For the active adventurers, free public tennis courts, a bowls club, and a playground at Harold Hughes Reserve are all just moments away. Plus, the wider Bass Coast region beckons with countless other stunning locations to explore.

A Property with Versatile Appeal Whether you're a savvy investor, looking for the perfect holiday escape, or downsizing into an idyllic coastal community, this cottage offers exceptional value and endless potential. Priced to sell and loaded with charm, it's a must-see for anyone eager to embrace the best of coastal living!

The information about this property has been supplied to us by the property owner, while we have no cause to doubt its accuracy, we provide no guarantee. We cannot attest to the functionality of any fixtures, fittings, or inclusions to the property. Land and home or apartment dimensions and floor/site plans are supplied by third parties. Typing mistakes and omissions transposing can occur, we provide to assist but make no representation. Buyers must carry out their own due diligence.

2 BED | 1 BATH | 2 CAR

PRICE:

\$470,000 - \$510,000

OPEN FOR INSPECTION:

N/A

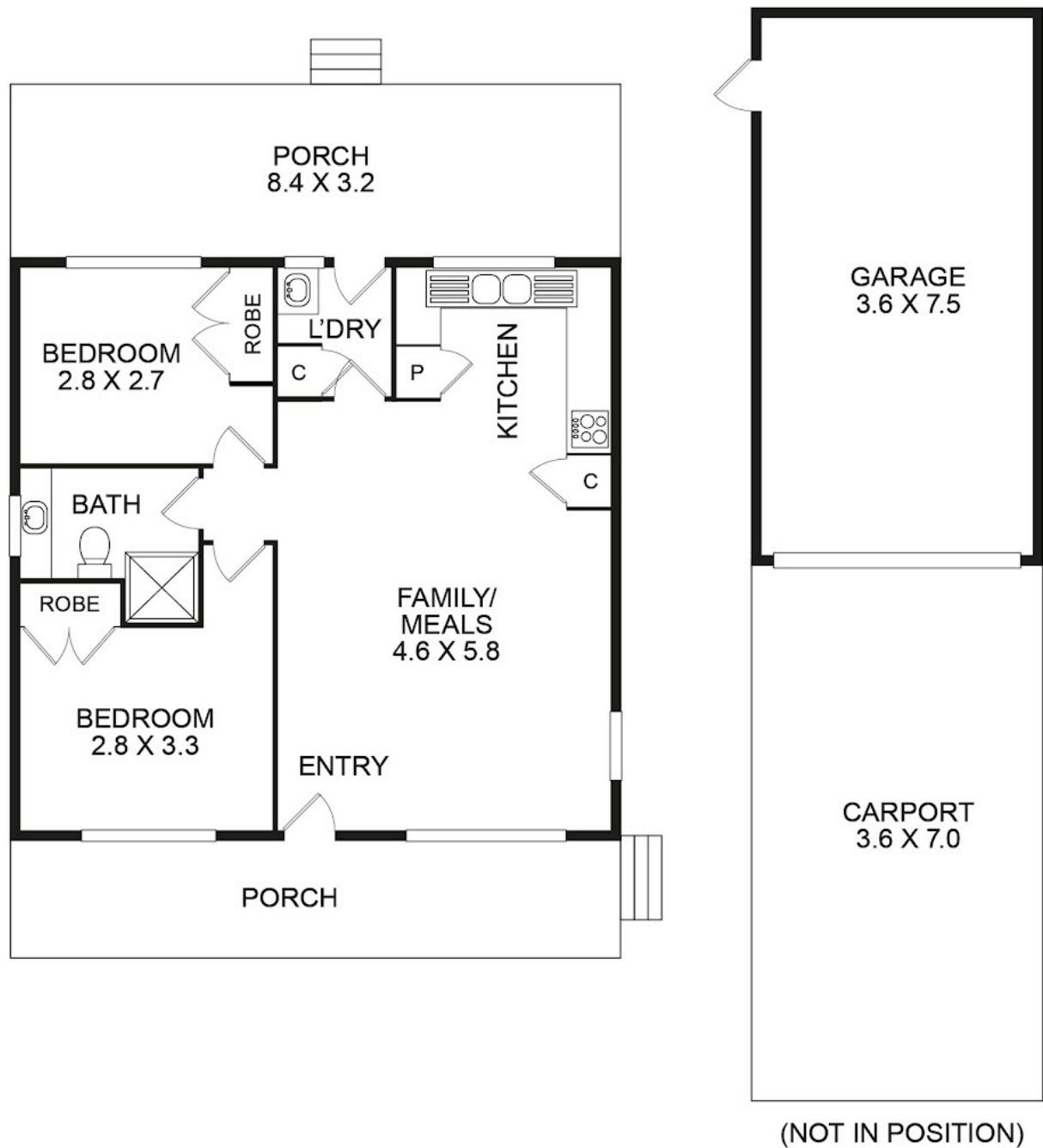


Tamara Leskie

0448809458

tamara.leskie@atrealty.com.au

www.atrealtypropertyexperts.com.au



Disclaimer: Please note this floor plan is for marketing purposes and is to be used as a guide only. All dimensions are estimates only and may not be exact measurements.

14 Arlington Crt, Corinella

Tamara Leskie
0448809458

tamara.leskie@atrealty.com.au

www.atrealtypropertyexperts.com.au

NOTE: Every precaution has been taken to verify the accuracy of the above details. However, prospective purchasers or tenants are advised to make their own enquiries. All furniture shown are for illustration only.

@realty