



SOLD

MASSIVE TOWNHOUSE IN PRIME LOCATION ON 408SQM

Perfectly positioned to embrace the renowned coastal lifestyle of Coffs Harbour, this immaculately maintained townhouse offers an exceptional living experience. With generous proportions and two large private courtyards, it provides the ideal blend of comfort, privacy, and space. The property offers access to a range of resort-style amenities, including an inviting pool, sauna, BBQ area, and a children's playground, giving you the ultimate in convenience and leisure. Located just a short stroll from the stunning Park Beach, as well as local shops and parks, this residence is a true gem.

Inside, the home is bathed in natural light, with multiple living areas that create a sense of openness and flow throughout the space. The covered alfresco area is perfect for outdoor dining or simply relaxing in the fresh air, while the large private yard offers plenty of room for family activities or gardening. The well-appointed kitchen boasts modern appliances, ample storage, and a functional layout that will inspire your culinary creativity. The two spacious living areas provide flexibility for both quiet moments and entertaining guests with the convenience of a third WC with the laundry. The second storey of the home features the main bathroom, and 4 generously sized bedrooms, the master with air-conditioning, ensuite, and an excellent view of the pool.

With a total land size of 408sqm and 200sqm of house, a double lock up garage also adds another unique feature to this rare town house in the heart of Park Beach. For added peace of mind, the complex is security-gated, offering a safe and secure environment for you and your family to enjoy the very best of Coffs Harbour living.

Position at the front, North facing end of this peaceful townhouse complex, the property offers the ultimate in privacy, allowing you to fully immerse yourself in the tranquility of your surroundings. Just a short stroll from breathtaking beaches, Coffs, Plaza, charming cafés, Hoey Moey, and the Park Beach Bowling Club, this unbeatable location places everything you need right at your doorstep. With such a substantial home, in such an enviable position, this opportunity is one that truly shouldn't be missed.

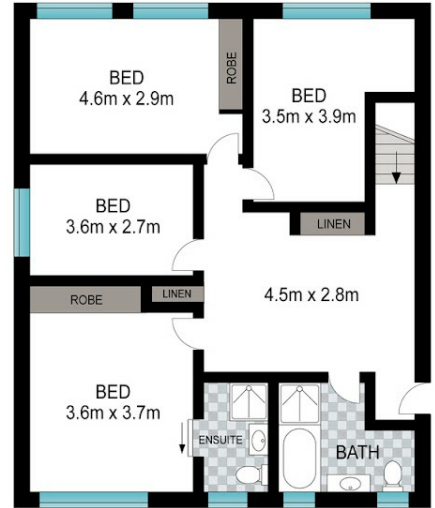
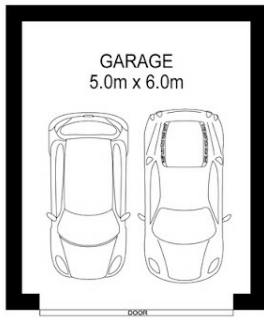
4 BED | 2 BATH | 2 CAR

PRICE:
\$830,000

OPEN FOR INSPECTION:
N/A



Bryce Heward
0423691322
bryce.heward@atrealty.com.au
www.atrealty.com.au



Scale in metres. Indicative only. Dimensions are approximate. All information contained herein is gathered from sources we believe to be reliable. However, we cannot guarantee its accuracy and interested persons should rely on their own enquiries.

INT: 220 m²
EXT: 20 m²

1/17 Boulwood Street, Coffs Harbour



Disclaimer: Please note this floor plan is for marketing purposes and is to be used as a guide only. All dimensions are estimates only and may not be exact measurements.

Bryce Heward
0423691322
bryce.heward@atrealty.com.au
www.atrealty.com.au

