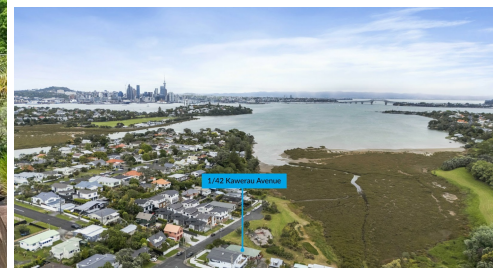


UNIT 1/42 KAWERAU AVENUE DEVONPORT

ELITE
REALTY



FOR SALE

ANOTHER SOLD! BY ELITE REALTY

Nestled in the heart of one of Devonport's most sought-after locations, this charming 2-bedroom home offers a perfect blend of comfort and natural beauty.

Elevated to capture panoramic views of the sparkling harbour and surrounding landscapes, this property is a true gem.

The home boasts spectacular harbour views, allowing you to wake up to the serene beauty of the water each day, and enjoy the ever-changing vista from your private balcony or living space. The sunny, elevated position ensures all-day sunshine and a sense of peace and privacy, making it an ideal spot for relaxation.

Inside, the home features bright, spacious interiors with an open-plan living area that connects to outdoor spaces – perfect for entertaining or simply enjoying the view.

Located just moments from Devonport's vibrant village, you'll have easy access to cafes, shops, stunning beaches, and all the local amenities you need. Public transport, schools, and parks are also within easy reach, offering an unbeatable lifestyle.

Whether you're looking for a stylish first home or an investment property, this home offers the perfect combination of location, lifestyle, and views.

Don't miss out – contact us today to arrange a viewing and experience the magic of this beautiful home for yourself.

The perfect place to call home in Devonport – make it yours today!

FAQ:
Bedrooms: 2
Bathrooms: 1
Floor: 80 sqm
Land: Cross lease
Age: 1966
Construction: Brick and tile
Cooking: Electric

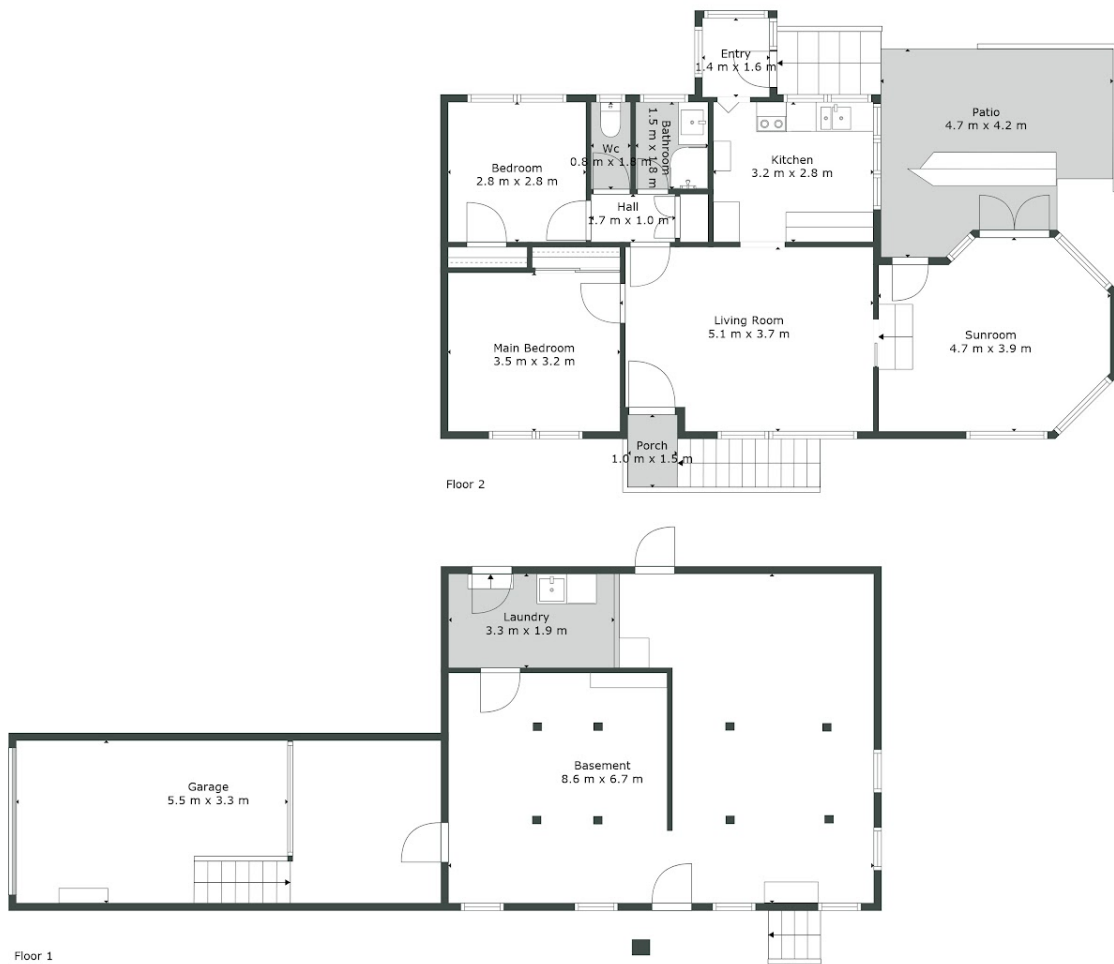
2 BED | 1 BATH | 1 CAR

PRICE:
Enquiries Over \$900,000

OPEN FOR INSPECTION:
N/A



Todd Sherley
021686000
todd@eliterealty.net.nz
www.eliterealty.net.nz



Sizes And Dimensions Are Approximate, Actual May Vary.



Disclaimer: Please note this floor plan is for marketing purposes and is to be used as a guide only. All dimensions are estimates only and may not be exact measurements.