



SOLD

HERE TODAY- GONE TOMORROW - CABBAGE TREE POINT

Vacant possession offered on modern family home directly opposite Royal Palm tidal lake with excellent fishing.

Freshly painted internally, three bedrooms, separate study with BIC and fans.

Master bedroom with ensuite and walk in robe.

Separate formal lounge and large open plan kitchen dining and rumpus with aircon.

Modern kitchen with dishwasher and gas cooktop.

Extra size double auto lock up garage plus separate lockable workshop.

Fully enclosed outdoor entertaining with range hood, fan and privacy louvres.

Modern sparkling salt water pool.

Fully landscaped fenced 1087 square meter block with spear pump.

Covered outdoor porch at front door overlooking lake.

Great side access for caravan and boat.

Cabbage Tree Point is the very north east corner of the Gold Coast and edge of Southern Moreton Bay.

Cabbage Tree Point boat ramp and Charlie Hammel Park, large grassy field with playground, right on the waterfront is 1 min drive.

Great holiday atmosphere abounds - minutes by boat to Jumpinpin and Straddie with great fishing and prawning.

300 meter stroll to Bowls Club and local take away.

School catchment for Woongoolba State School 5 min away and Ormeau Woods State High School 15 min.

Pimpama City shopping centre and Kings Collage 15 min.

M1 or Ormeau train station 15 min.

3 BED | 2 BATH | 2 CAR

PRICE:

\$1,030,000

OPEN FOR INSPECTION:

N/A



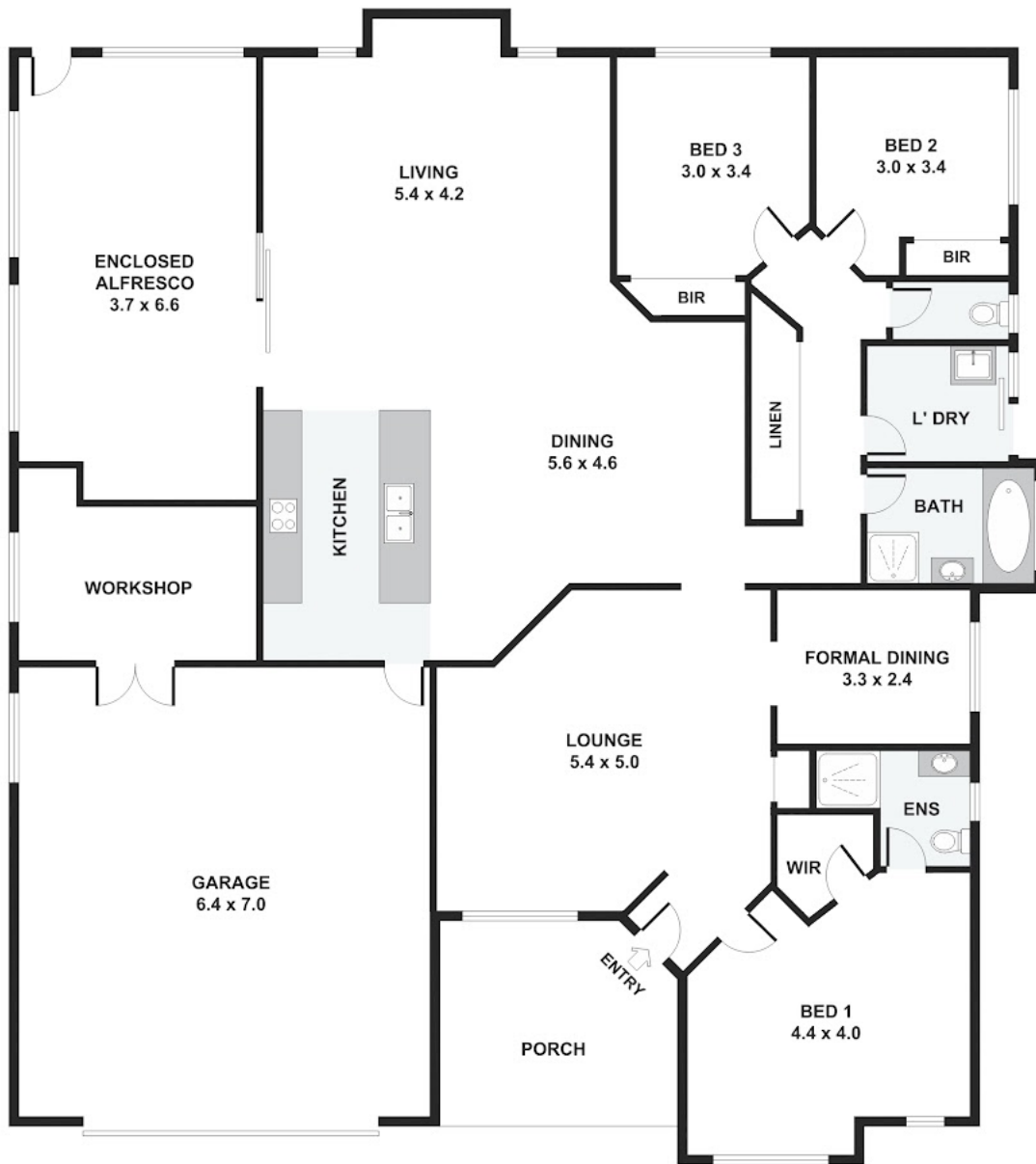
Danny Holder

0412874224

danny@atrealty.com.au

www.atrealty.com.au

11 Royal Palm Drive, Steiglitz



Disclaimer: Please note this floor plan is for marketing purposes and is to be used as a guide only. All dimensions are estimates only and may not be exact measurements.

Please note: All stated dimensions are approximate only. Particulars given are for general information only and do not constitute any representation on the part of the vendor or agent.