



FOR SALE

"ESCAPE TO YOUR DREAM ACREAGE OASIS ON
TAMBORINE MOUNTAIN. LIVE THE ULTIMATE
LUXURIOUS LIFESTYLE. "

"Escape to Paradise on Tamborine Mountain: Your Dream Acreage Awaits!"

Nestled among the lush greenery and breathtaking views of Tamborine Mountain, this stunning property is the epitome of luxury and relaxation. Boasting 7 bedrooms and 6 bathrooms, this expansive estate offers plenty of space for you and your loved ones to spread out and enjoy the serenity of nature.

As you drive down the winding driveway, you'll feel the stress of city life melt away, replaced by the peace and tranquility of the countryside. The 3.05 hectares of land surrounding the property is your own private sanctuary, with endless possibilities for outdoor activities and adventures.

Step inside this grand double-storey home and be greeted by the luxurious yet cozy interior. The 610 square meters of floor area is meticulously designed, with every detail carefully crafted to create an atmosphere of elegance and comfort. The spacious living areas are perfect for entertaining guests or simply relaxing with your family, while the 7 oversized Bedrooms, 3 with ensuites provide privacy and convenience for every member of the household.

But the real showstopper of this property is the outdoor features. Imagine sipping your morning coffee on the balcony, taking in the stunning views of the mountain landscape. Or hosting a barbecue on the deck, surrounded by the sounds of nature and the laughter of your loved ones. And on hot summer days, cool off in the sparkling in-ground swimming pool, or soak in the outside spa under the stars.

For those who love to entertain, the outdoor entertainment area is a dream come true. With your manicured acreage the only thing between you and the stunning sunset views over the mountain ranges, you can host gatherings whilst enjoying complete privacy or serenity, accompanied only by bird song from the diverse native bird life that frequent the property, along with dusk visits from the local wallaby families.

But the luxury doesn't end there. Inside, the property boasts an array of impressive features that

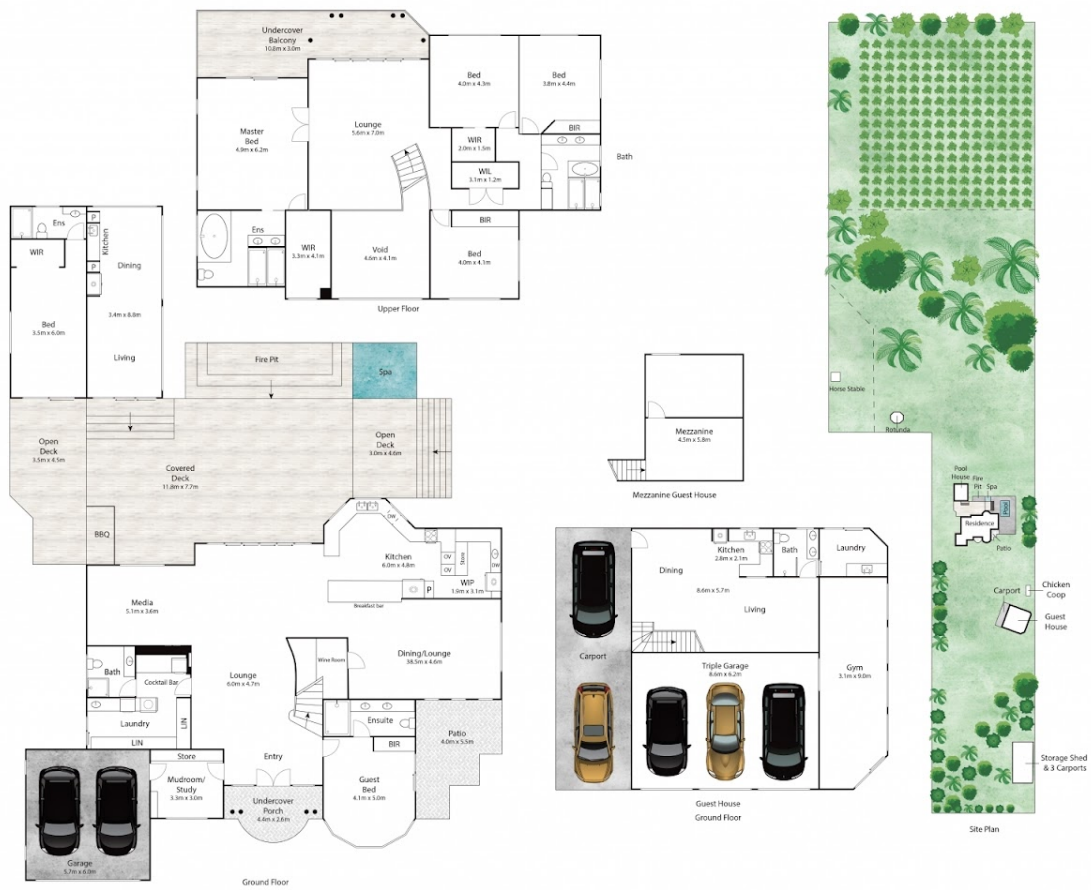
**7 BED | 6 BATH | 10
CAR**

PRICE:
Expressions of Interest

OPEN FOR INSPECTION:
N/A



Bernadette Brushe
0407176052
abode@aboderealty.au
www.aboderealty.au



Approx House Area 441m²
 Approx Guest House Area 169m²
 Approx Land Area 7.54 Acres

Whilst Media Abode has made every attempt to ensure the accuracy of the floor plan contained here, measurements are approximate and no responsibility is taken for any error, omission, or mis-statement. This plan is for illustrative purposes.

abode

Disclaimer: Please note this floor plan is for marketing purposes and is to be used as a guide only. All dimensions are estimates only and may not be exact measurements.