

FOR SALE

EXPERIENCE LUXURY LIVING IN BIRKDALE!
STUNNING BRAND NEW 4 BED, 2 BATH HOME
WITH OUTDOOR ENTERTAINMENT AREA,
SECURE PARKING, DUCTED AIRCON

CONTRACT IS NOW UNCONDITIONAL.

Combining a serene location with a single-level design, this brand-new, low-maintenance home offers the perfect blend of luxury and carefree bayside living.

Nestled on a fully fenced, level block adjoining picturesque bushland, this home provides a peaceful sanctuary that invites relaxation and security. From the moment you step inside, the warmth and spaciousness of this stunning property will captivate you.

Designed for modern living, the home features fully ducted (zoned) air conditioning, premium appliances including induction cook top, and the assurance of builder warranties. Open-plan living and dining areas flow seamlessly into a tiled outdoor alfresco space, ideal for entertaining or enjoying the leafy surroundings.

Luxury Features Include:

Designer Kitchen: Large stone island bench with double undermount sink, dishwasher, 90cm oven, and induction cooktop, all backed by a 5-year warranty.

Climate Control: Fully ducted (zoned) air conditioning and ceiling fans throughout.

Sophisticated Master Suite: Spacious bedroom with a built-in robe and private ensuite featuring a shower and vanity.

Elegant Bathrooms: Superior main bathroom with a standalone bath, separate shower, and toilet.

Generous Bedrooms: Three additional bedrooms, each with built-in wardrobes.

Premium Finishes: Upgraded timber flooring in living areas and plush carpets in bedrooms.

Practical Laundry: Large separate laundry with outdoor access.

Ample Parking: Double remote lock-up garage with an aggregate concrete driveway.

Unbeatable Location

This exceptional home is ideally positioned near shopping centres, schools, train stations, sporting clubs, and bayside beaches. It's just a short drive to the Royal Birkdale Golf

4 BED | 2 BATH | 2 CAR

PRICE:

Offers over \$1,000,000

OPEN FOR INSPECTION:

N/A

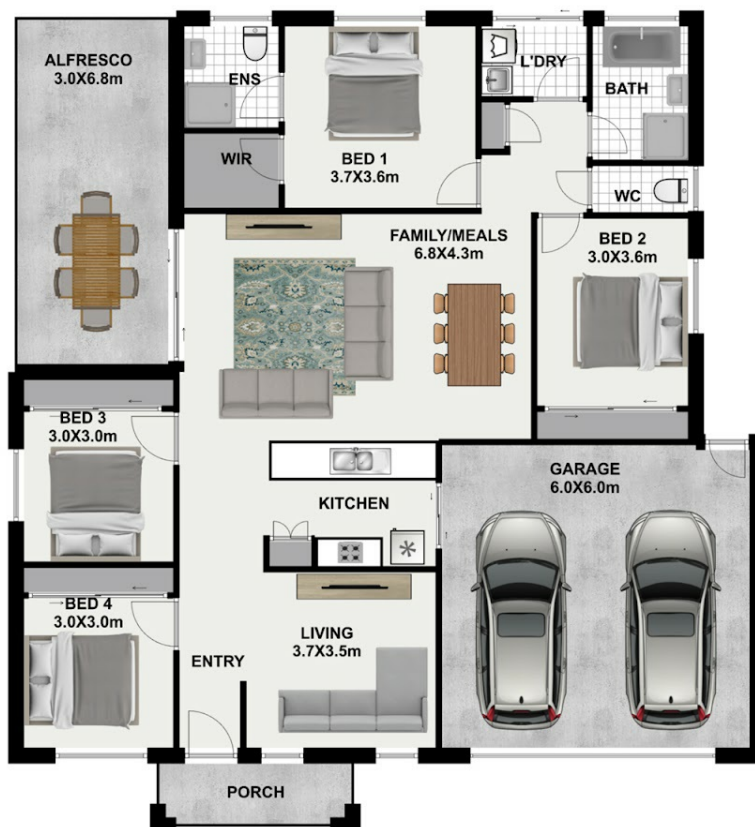


Carey Halfpapp

0438928538

carey@atrealty.com.au

www.atrealty.com.au



9 Saint Andrews Ave, **BIRKDALE**



This floorplan is not to scale; measurements are indicative and in meters. Exterior elements are not in position. Plans should not be relied on. Interested parties should make and rely on their own enquiries. All other information provided has been collected from reliable sources but cannot be guaranteed for accuracy.

Disclaimer: Please note this floor plan is for marketing purposes and is to be used as a guide only. All dimensions are estimates only and may not be exact measurements.