



**SOLD**

## 2-BEDROOM UNIT IN A HIGHLY SOUGHT-AFTER SUBURB

Located on a picturesque, tree-lined street in a highly sought-after suburb, this newly renovated and secure 2-bedroom unit is presented in immaculate condition. Nestled within a small, tightly held strata group of five, this property enjoys proximity to popular cafes, eateries, and parks, offering a lifestyle of comfort and convenience. With an upgraded kitchen, split-system air conditioning, updated fixtures and fittings, and fresh paint, there's nothing left to do but move in and enjoy.

Tenanted at \$450 per week till 12/12/2025

### Features:

- Master Bedroom: Spacious, featuring a ceiling light.
- Bathroom: Fully equipped with a shower, toilet, and vanity.
- Second Bedroom: Generously sized to accommodate a range of needs.
- Living Room: Large and inviting, complete with a split-system air conditioner for year-round comfort.
- Modern Kitchen: Stylish wrap-around kitchen with a sleek gloss finish, ample bench space, storage, gas cooktop, oven, sink, and a spacious pantry.

Located within the desirable Marryatville Primary and High School zones, this property is also close to local shops and public transport. It offers a secure, low-maintenance lifestyle, making it ideal for first-home buyers, downsizers, or investors.

Property Details: Council: City of Burnside, Year Built: 1960, Zoning: Residential Greater Kensington Gardens RPA7

Don't miss this opportunity to secure a meticulously renovated unit in a prime location. Contact Jack at 0433 245 523 to arrange an inspection today.

Disclaimer: While every effort has been made to ensure the accuracy of this information, we accept no liability for errors, omissions, or inaccuracies. Prospective buyers or tenants are encouraged to make their own enquiries to verify the details provided. RLA 269823

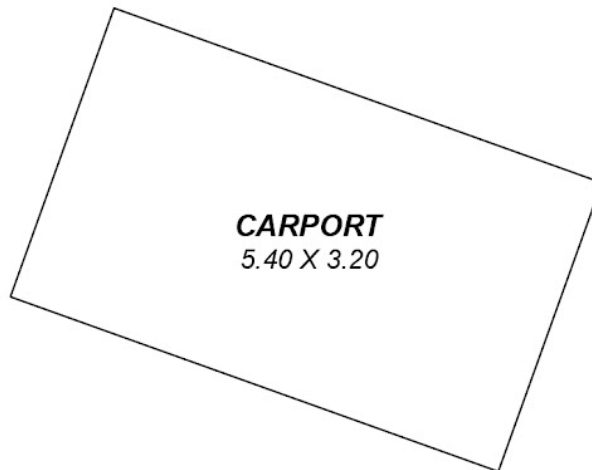
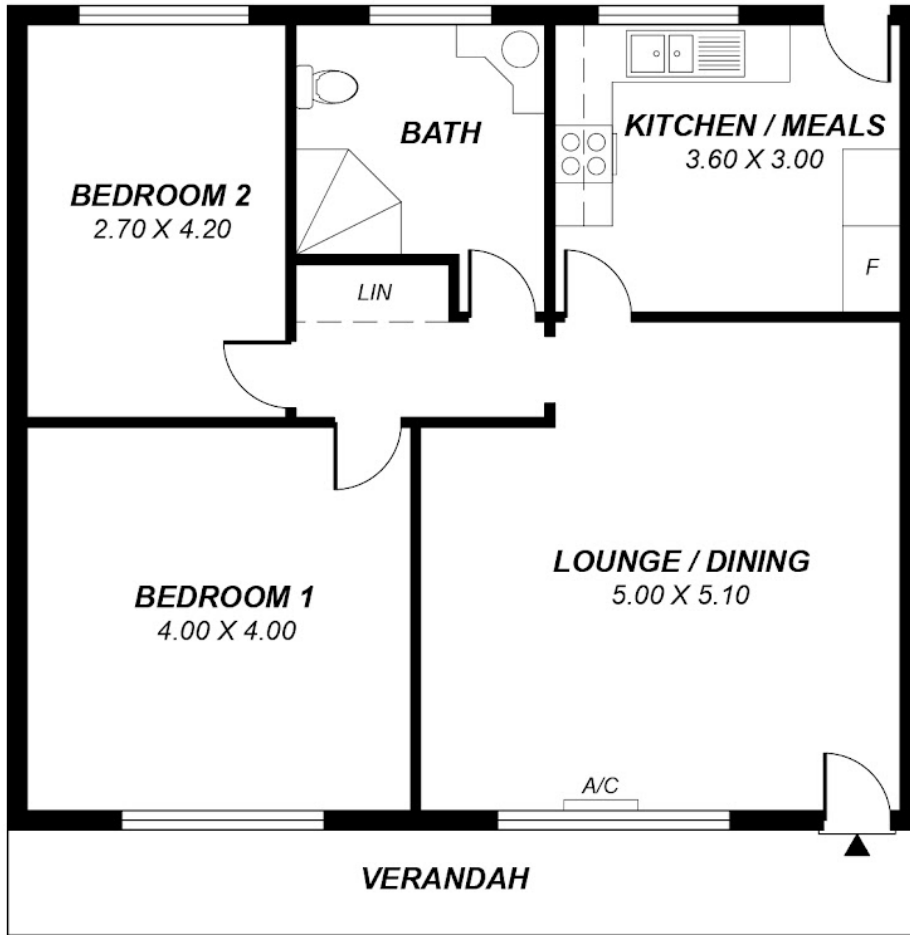
2 BED | 1 BATH | 1 CAR

PRICE:  
\$538,000

OPEN FOR INSPECTION:  
N/A



**Jun Chi**  
**0433245523**  
jackjunchi@atrealty.com.au  
[www.atrealty.com.au](http://www.atrealty.com.au)  
RLA: 269823



*This drawing is for illustration purposes only.*

Area	m <sup>2</sup>
Living	81.70

Disclaimer: Please note this floor plan is for marketing purposes and is to be used as a guide only. All dimensions are estimates only and may not be exact measurements.