



SOLD

LUXURIOUS LIVING AT IT'S BEST

Introducing the Monteverde by B-Halcyon, 185/2 Retreat Drive, BUDERIM

Meticulously maintained in pristine condition this home sets an exceptional level of excellence. Situated in Buderim's award winning over 50's lifestyle complex establishing itself as one of the Sunshine Coasts most exclusive residential enclaves.

The Monteverde is a superb open plan design that balances space and privacy. Here you'll find the home fitted out with highend fittings and fixtures. Couple this with Halcyon's determination to provide an astonishingly high level of facilities that are designed to enhance a lifestyle second to none.

The villa consists of three bedrooms, formal entry, two fully tiled bathrooms, stunning galley-style kitchen with butler's pantry, separate laundry, huge open plan living and dining zone enhanced by high ceilings through to the equally spacious patio looking across to the tranquil setting of a Native Rainforest.

Features include, 4-zone ducted Daikin air-conditioning, ceiling fans, plush carpets and 600x600mm tiles, plantation shutters, 20mm stone benches in all wet areas, induction cooktop, integrated dishwasher, zip hot water tap, soft close cabinetry, two wine fridges, dual vanities in ensuite, direct patio access from master, and 6.5kW solar 10kw Tesla Battery. (Yet to receive a power bill)

NOTE; A secure gated, pet-friendly community with no exit fees, no stamp duty, and no rentals B by Halcyon it's suffice to say the best community of its kind.

At a glance

- 2 bedrooms, 2 fully tiled bathrooms
- Galley kitchen with quality appliances
- Butler's pantry/laundry combination
- Multiple living spaces
- Expansive open plan living/dining
- Large Patio block-out blinds
- Private drying courtyard off laundry
- High ceilings, 4-zone ducted A/C

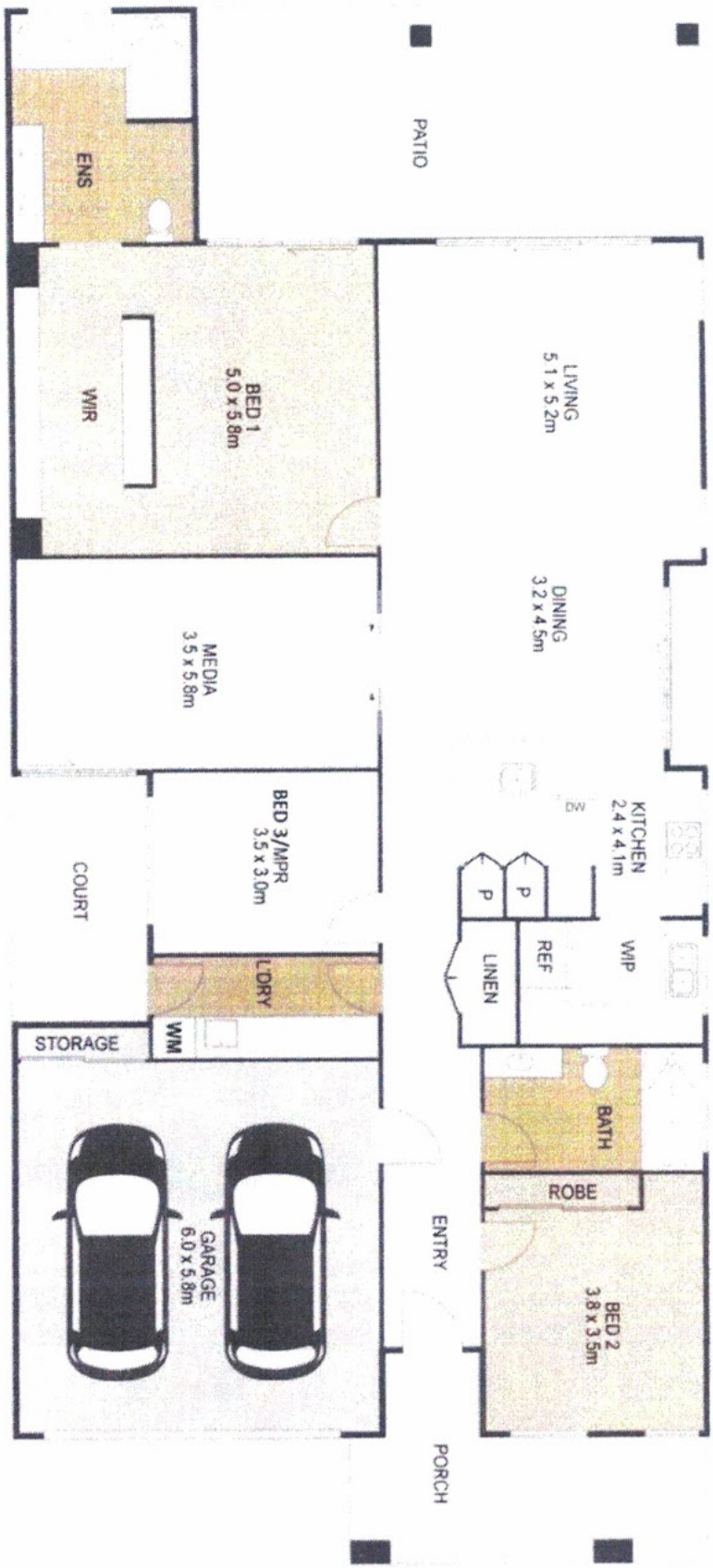
2 BED | 2 BATH | 2 CAR

PRICE:
\$1,675,000

OPEN FOR INSPECTION:
N/A



Ken Callec
0427515000
yes@atrealty.com.au
www.atrealty.com.au



185/2 Retreat Drive, BUDERIM

APPROXIMATE ONLY. While every effort has been made to ensure the accuracy of this floor plan's areas and measurements, it is advised that you verify all dimensions and measurements on site. This plan is for illustrative purposes only and should only be used as a guide. For more information, please contact your real estate agent. www.opentitle.com.au

Disclaimer: Please note this floor plan is for marketing purposes and is to be used as a guide only. All dimensions are estimates only and may not be exact measurements.

2 2 3

280m²

Ken Callec
 0427515000
 yes@atrealty.com.au
 www.atrealty.com.au

