



FOR SALE

STUNNING 2 STOREY RESIDENCES IN SECURE, BOUTIQUE GATED COMPLEX - SELLING FAST - DON'T WAIT TOO LONG

Wirra Estate is a brand new, exclusive, secure, gated community of only 42 residences. These contemporary, open plan, coastal designed homes boast 4 bedrooms, 2.5 bathrooms, double garages and with 2 floor plans of 173sqm and 189sqm, these are sure to suit all buyers from the savvy investor looking for a great return on the Gold Coast, with its location so close to the Gold Coast City Hospital and Medical precinct and Griffith University. Downsizers looking to give away their lawnmower and enjoy their weekends again. Families looking for all the space they need without the maintenance of the big family home and garden.

You'll love the spacious, open-plan living and dining areas that flow seamlessly out to your private terrace - ideal for entertaining friends and family. The gourmet chefs' kitchen and walk-in pantry and the sunlight flooding into these generous living areas with high 2.7 ceilings for a light and airy feeling.

The Master suite enjoys a walk-in robe and luxurious ensuite with freestanding bath, separate powder room and ample storage. 3 further generous bedrooms, and family bathrooms complete these beautiful homes. These stunning residences interiors are designed to ensure a luxurious living experience.

Residences Features include:

- High quality fixtures, finishes and fittings throughout
- Stone benchtops
- Engineered European oak flooring to living and stairs
- Premium BOSCH appliances including wall oven, built-in microwave, induction cooktop and semi-integrated dishwasher
- Ducted air conditioning and ceiling fans to all bedrooms, living, MPR and outdoor terrace

Residents will enjoy resort-style amenities, pool, dining pavilion including pizza oven and BBQ, herb and veggie garden and fire pit areas, making every day feel like you're on holiday. Also,

4 BED | 3 BATH | 2 CAR

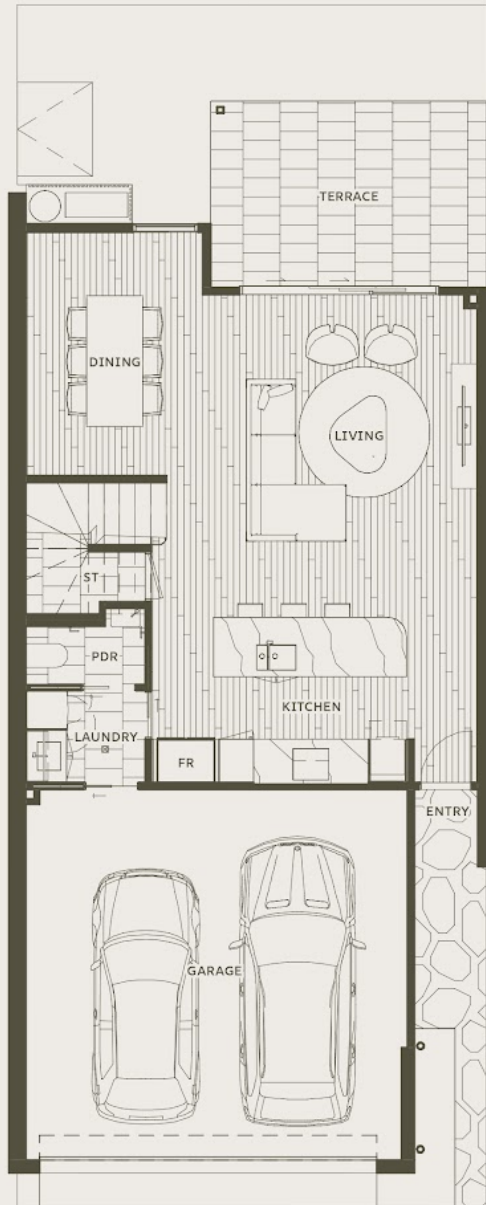
PRICE:
FROM \$1,089,000

OPEN FOR INSPECTION:
N/A

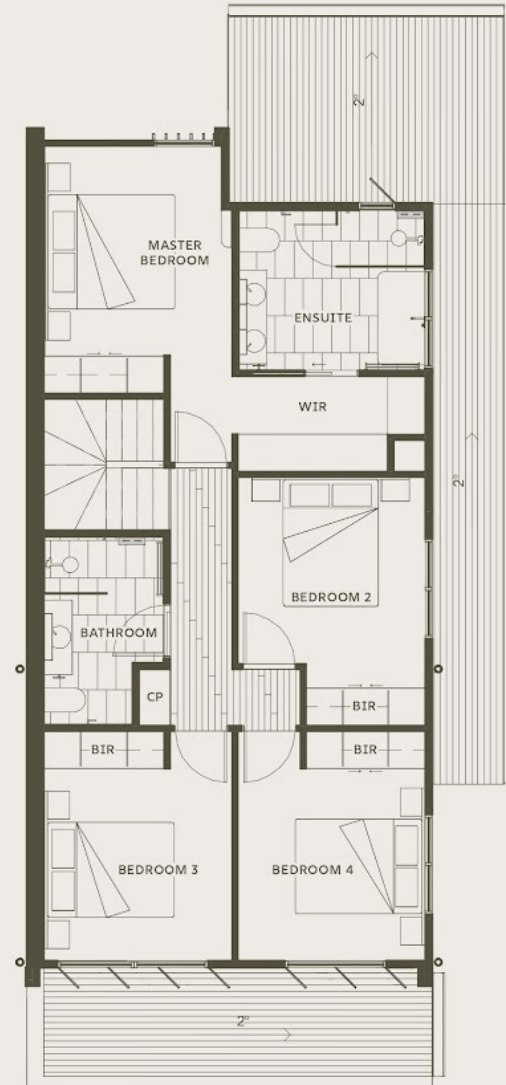


Francine Setchell
0408143464
francine@atrealty.com.au
www.atrealty.com.au

1.01



Ground Floor



Level 1

wirra estate

Note: Refer to individual lot sizes. Front and rear screens vary between lots.

FR - Fridge/Freezer PDR - Powder Room ST - Storage CP - Cupboard BIR - Built In Robe WIR - Walk In Robe

0 1 2 3 4 5

Disclaimer: Please note this floor plan is for marketing purposes and is to be used as a guide only. All dimensions are estimates only and may not be exact measurements.

2 Car Space

Total

176m²

13m²



contract of sale and it's schedule to clarify all matters which are included in the purchase price.

Francine Setchell
0408143464
 francine@atrealty.com.au
www.atrealty.com.au

103 OSLEN AVENUE, LABRADOR

@realty