



FOR SALE

SOLD! RENOVATOR ON LEVEL BLOCK IN EXCELLENT LOCATION!

SOLD!

Ladies and gentlemen, we are pleased to present to you this fantastic renovation opportunity!

Set on a level 602m2 corner block in a quiet back street is this 3 bedroom home with huge potential.

The single level brick home needs work and updating, but the bones are solid and the block is brilliant.

There is a single garage, a central lounge and dining area, large kitchen space, bathroom + 3 bedrooms.

Outside, the yard is flat and completely useable, and having full second street access is a big advantage.

There is ample room for a shed, carport, swimming pool, granny-flat, extension, or just a big yard space.

And the block is ideal for those who need space for vehicles, trucks, caravans, boats, trailers and similar.

So bring your paintbrushes and hammer, repair and complete what's there, and you will reap the rewards!

Walk to local schools, shops, parks, bus. Only 30 minutes to Brisbane CBD and 45 minutes to Gold Coast.

Capalaba Park, Capalaba Central and Maridale Park are all within easy reach, as is Wentworth Drive Park.

This home is ideal for first-time buyers, investors or renovators, and homes at this price are

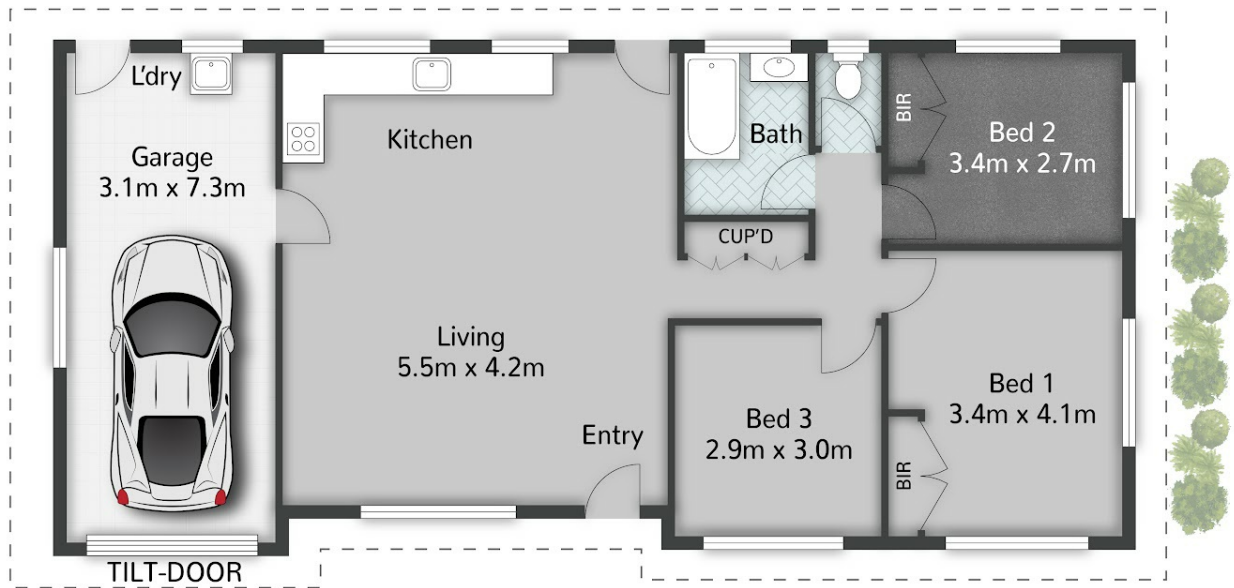
3 BED | 1 BATH | 1 CAR

**PRICE:
SOLD!**

**OPEN FOR INSPECTION:
N/A**



Ben Tafolo
0419260719
tafolo@atrealty.com.au
teamtafolo.com.au



2 Mitchell Street **CAPALABA**

3 | 1 | 1 | 104m² | 602m²

All dimensions are approximate; they are subject to errors and inaccuracies and no liability will be accepted.
Plans are shown for marketing purposes only.

Disclaimer: Please note this floor plan is for marketing purposes and is to be used as a guide only. All dimensions are estimates only and may not be exact measurements.