

FOR SALE

EXCEPTIONAL BRAND-NEW FAMILY HOME IN THE HEART OF RIVERWALK ESTATE ON 500M² LAND !!

This architecturally designed home offers a flawless blend of style, functionality, and luxury, featuring a meticulously planned layout and a modern color scheme that will impress at every turn. The striking contemporary facade makes a lasting first impression, while the 2.7-meter-high ceilings throughout enhance the feeling of space and grandeur.

Upon entering, you are greeted by a wide entrance with double doors leading into a versatile front lounge room, perfect for a theater room or family gatherings. The luxurious Master Bedroom is a true retreat, complete with a walk-in robe and a stunning ensuite bathroom. The ensuite boasts an extended shower, double vanity, and a stone benchtop, adding a touch of sophistication to your daily routine.

The heart of the home is the expansive open-plan kitchen, dining, and living area, seamlessly designed for modern indoor-outdoor living. The kitchen is a chef's delight, featuring a stone benchtop, 900mm gas stove, oven, and dishwasher for convenience. A butler's pantry adds extra storage and functionality, perfect for all your culinary needs.

Every detail has been carefully crafted, from the elegant tapware to the premium fixtures that ensure a high-quality finish. Custom tiles enhance the bathrooms and common areas, while the built-in robes in the three additional bedrooms provide ample storage space, helping to maintain an organized and clutter-free environment. High internal doors elevate the sense of luxury and sophistication throughout the home.

Stay comfortable throughout the year with evaporative cooling and gas heating. Designer lighting and LED downlights illuminate the space, creating a warm and inviting ambiance. For convenience, the double-car garage provides ample parking, and the added side access allows for secure parking of boats, caravans, or additional vehicles.

This home is perfectly positioned within walking distance to Riverwalk Primary School, Riverwalk Water Park, and the upcoming Riverwalk Town Centre. It's also conveniently located near Werribee Secondary School, Mackillop College, childcare services, public transport, and

4 BED | 2 BATH | 2 CAR

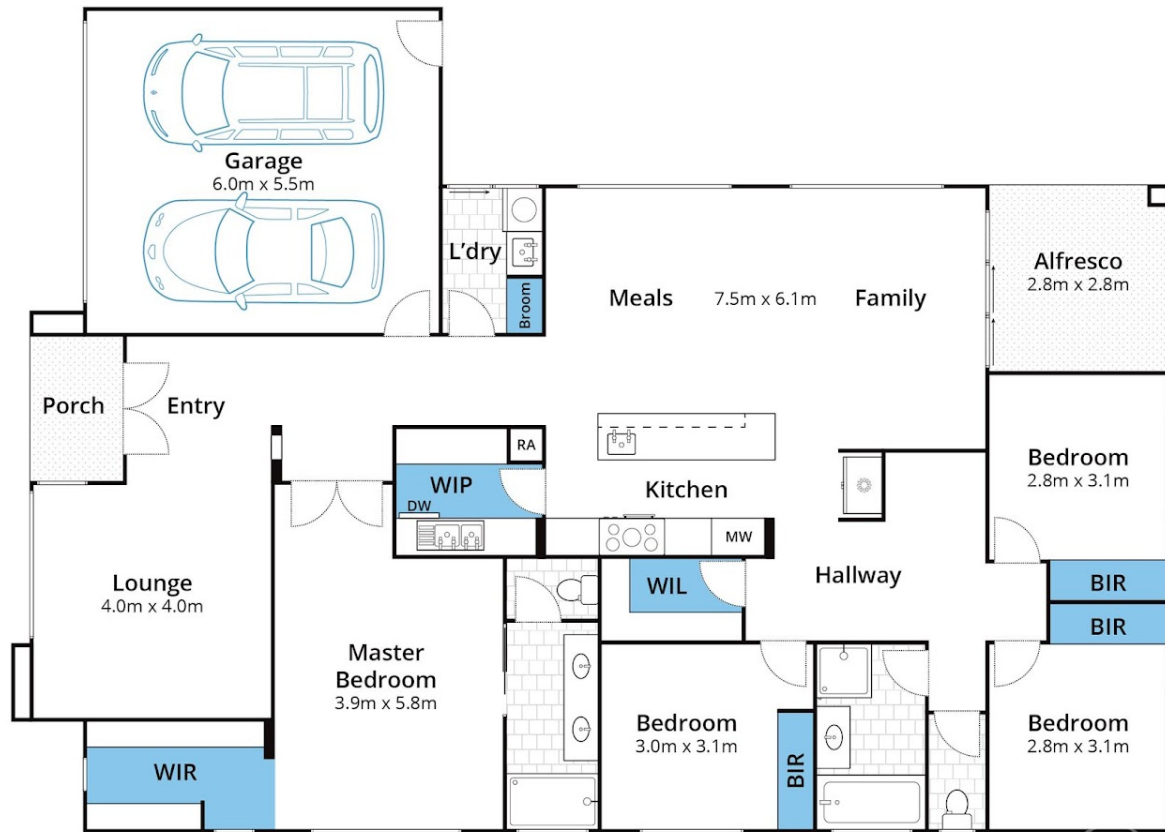
PRICE:
\$860,000 - \$895,000

OPEN FOR INSPECTION:
N/A



Sandeep Bhangu
0432549151

sandeep@localpropertyexperts.com.au
localpropertyexperts.com.au



Approx Land Area 499m²

Whilst bwrn.com.au has made every attempt to ensure the accuracy of the floor plan contained here, measurements are approximate and no responsibility is taken for any error, omission, or mis-statement. This plan is for illustrative purposes only.

13 Rawson Circuit, Werribee



Disclaimer: Please note this floor plan is for marketing purposes and is to be used as a guide only. All dimensions are estimates only and may not be exact measurements.