



**SOLD**

## RIVERSIDE RETREAT.

Located just 6.5km northeast of Moree, this exceptional residence epitomizes luxurious riverside living. Situated on 4681sqm and positioned on the banks of the Gwydir River, it has been crafted with quality and durability in mind. Mahogany flooring, 9 foot ceilings, terracotta tiling and extensive picture windows are just some of the features that make it one of Moree's more unique properties.

Features:

- \*4 bedrooms, 2 with built ins and main with WIR and en-suite.
- \*Enormous loft suitable for guest bedroom, children's play area, office or all three.
- \*Quality custom built kitchen featuring a very substantial island bench, pyrolytic oven and induction cooktop.
- \*Separate formal living and dining rooms located on either side of the entry hallway.
- \*Fully integrated reverse cycle air conditioning.
- \*A spacious laundry includes a third toilet and has direct access to the eastern side of the property.
- \*Double lock-up garage with remote control access and internal entrance.
- \*Built on steel bearers and joists and all steel frame with adjustable steel support piers.
- \*Garden is predominately buffalo lawn with native trees on the boundary giving excellent shade.
- \*There is a second small building, that with some renovation could be utilised for accommodation.

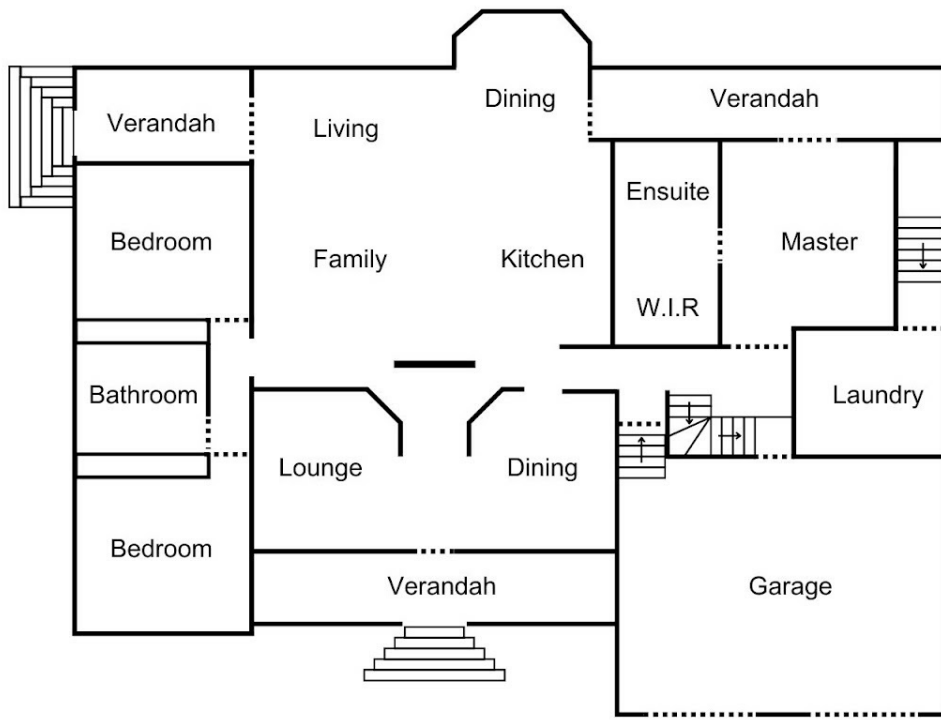
**4 BED | 2 BATH | 2 CAR**

**PRICE:**  
**\$1,350,000**

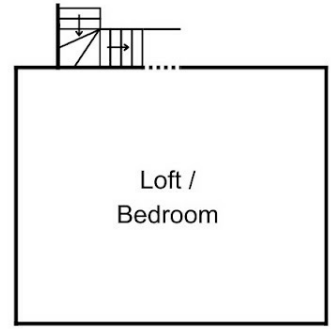
**OPEN FOR INSPECTION:**  
N/A



**Tony O'Sullivan**  
**0400621928**  
sull@atrealty.com.au  
[www.atrealty.com.au](http://www.atrealty.com.au)



**GROUND FLOOR**



**UPPER FLOOR**



Indicative only. All dimensions are approximate. All information has been gathered from sources believed reliable. It's accuracy is not guaranteed. All interested persons should rely on their own enquiries.

Disclaimer: Please note this floor plan is for marketing purposes and is to be used as a guide only. All dimensions are estimates only and may not be exact measurements.