



FOR SALE

FANTASTIC DUAL LIVING INVESTMENT - \$1,100 RENT PW !

Elevated with a beautiful rural outlook, this lovely dual-key property is designed to maximise income for the savvy investor. Built in 2018 on a 704 sqm block with a combined rental income of \$1,080 per week.

The spacious open-plan dual living property includes a three-bedroom home on one side, featuring a cozy dining/living area, a beautiful kitchen with ample storage, stone benchtops, and stainless steel appliances. The master bedroom has air conditioning, a walk-in robe, and an ensuite, leading out to a large covered outdoor alfresco area, a remote lock-up garage, and a fully fenced backyard.

On the opposite side is a two-bedroom home with air conditioning and built-in robes, a quality kitchen with stone benchtops, and a combined living and dining area. It also includes a master bathroom, a single remote-controlled garage, a large covered alfresco area, and a private yard.

Unit 1

- Currently rented at \$610 per week (lease in place to February 2025)
- Low-set
- Three bedrooms, master with walk-in robe
- Air conditioning in the living area and master bedroom, plus ceiling fans
- Bathroom and ensuite for the main bedroom
- Modern kitchen with dishwasher
- Open-plan living area
- Single lock-up garage with remote
- Large covered outdoor area

Unit 2

- Currently rented at \$470 per week (lease in place to January 2025)
- Low-set
- Two bedrooms
- Bathroom
- Modern kitchen with dishwasher
- Air conditioning in the living area and master bedroom, plus ceiling fans

5 BED | 3 BATH | 2 CAR

PRICE:

Contact Agent

OPEN FOR INSPECTION:

N/A



Karen Moke

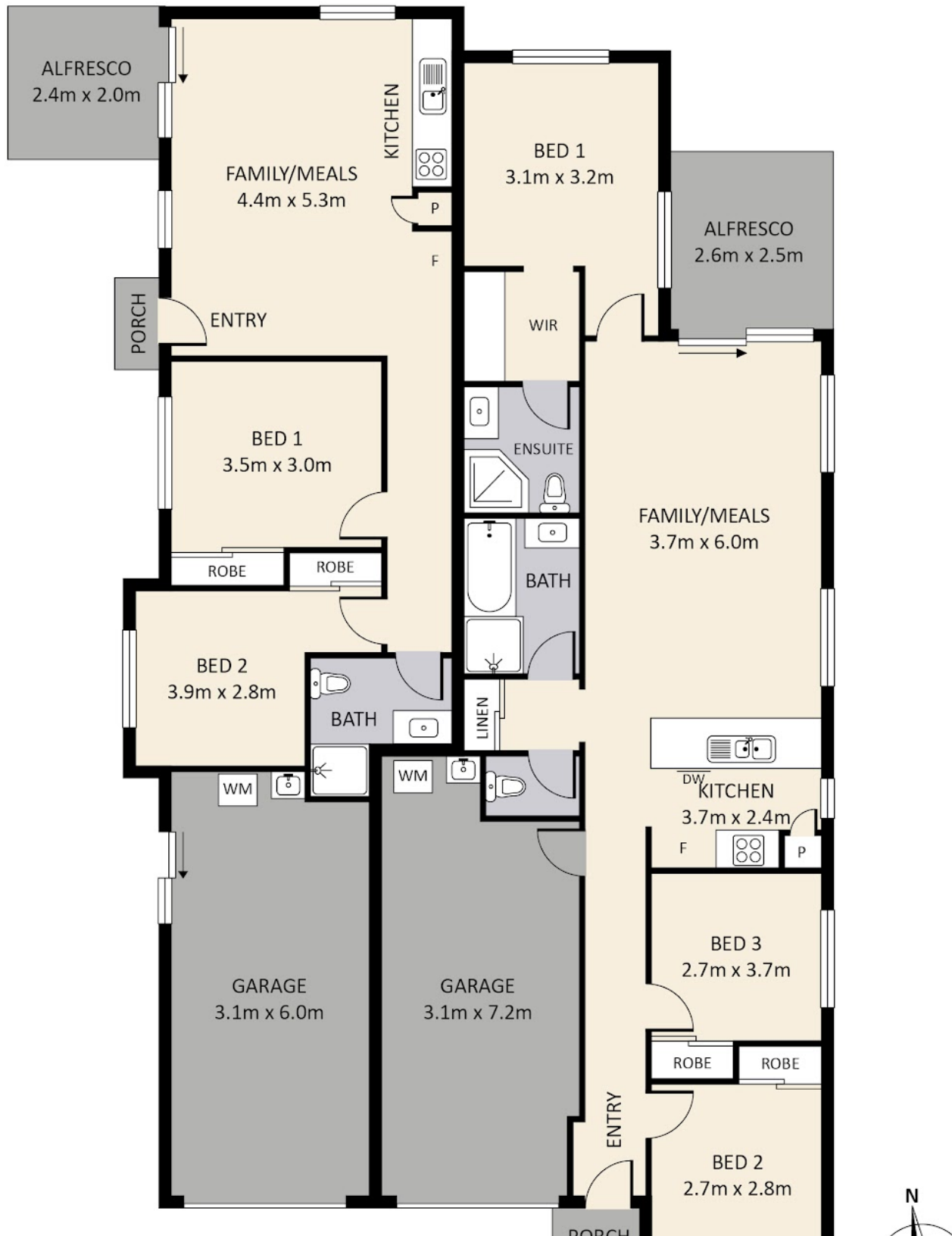
0406521370

karenmoke@atrealty.com.au

www.atrealty.com.au

24 Reo Place Yandina

Total approx floor area 211m²



Disclaimer: Please note this floor plan is for marketing purposes and is to be used as a guide only. All dimensions are estimates only and may not be exact measurements.

Disclaimer: Floor plan measurements are approximate and for illustrative purposes only.