



FOR SALE

YOUR DREAM HOME IN A DREAM LOCATION – WHAT MORE COULD YOU WISH FOR?

In this stunning entertainer's dream, you're not just purchasing a home, but you're also buying a lifestyle where each day unfolds like a luxury holiday. This magnificent home is beautifully positioned on the waterfront and has been crafted with every detail designed to enhance both life's grandest celebrations and its simplest joys.

Step into the grand foyer, where light floods in and hints at the enchantment waiting just beyond. The open-plan lounge, dining and kitchen area is designed for effortless flow and breath-taking water views.

Slide open the bi-fold doors, and the indoor space expands into an indulgent outdoor entertainment area. With a bar thoughtfully placed to serve both the indoor lounge and poolside, every gathering here feels like a special occasion – enjoy a cocktail by the infinity-edge pool or unwind on your own private sandy beach, as you let the river's gentle currents set the scene.

For movie nights that rival the theatre experience, your personal cinema room takes centre stage where every film is enhanced. The dining area is adorned with a built-in fish tank, offering a unique ambience, while the chef's kitchen is equipped with waterfall stone countertops and bi-fold windows that let the home chef stay connected to guests whether inside or out.

The ground floor's primary bedroom wing is a restful haven of luxury, with an expansive suite featuring a sumptuous ensuite bath, a walk-in dressing room and views that transform mornings into a dream. Meanwhile, an additional fifth bedroom or study near the entry provides an ideal space for work.

Upstairs, three more bedrooms with walk-in robes offer private retreats for family or friends, all centered around the luxury bathroom and separate toilet. Outdoors, you have everything for fabulous waterfront living, from the expansive side yard and private courtyard with stone feature walls to a private boat ramp and pontoon for endless adventures on the Tweed River and the ocean.

Spread across a prestigious 1,116 sqm on a peaceful cul-de-sac with over 40 metres of water frontage, this home promises a true oasis – stunning by day, enchanting by night and ready to

5 BED | 3 BATH | 5 CAR

PRICE:

Contact Agent

OPEN FOR INSPECTION:

N/A



Michelle Topper

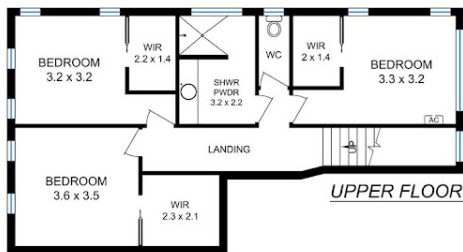
0400362639

michelle.topper@atrealty.com.au

www.atrealty.com.au



Energy Efficient
Home with 4.5kw
Solar Power
System & Solar
Hot Water

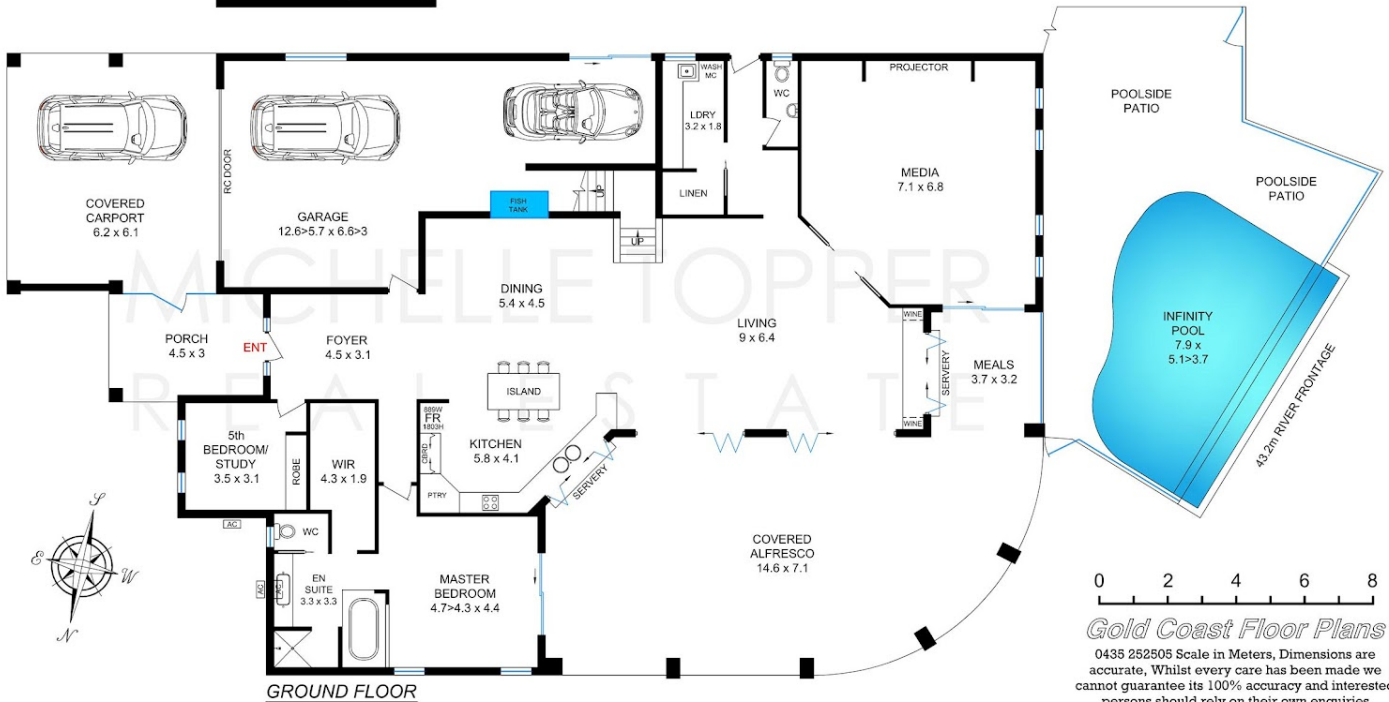


Land Size
1116m²

Ceiling Height
2.4m - 4.1m

Floor Plan 1 of 2

23 THE MAINBRACE,
TWEED HEADS 2485



0 2 4 6 8

Gold Coast Floor Plans

0435 252505 Scale in Meters, Dimensions are accurate, Whilst every care has been made we cannot guarantee its 100% accuracy and interested persons should rely on their own enquiries

Disclaimer: Please note this floor plan is for marketing purposes and is to be used as a guide only. All dimensions are estimates only and may not be exact measurements.