



Fewtrell Realty @realty

FOR SALE

VERSATILE OPPORTUNITY - WORTH AN INSPECTION

This property is zoned Medium Impact Industry and offers many choices for the discerning buyer. Situated in a flood free area and easy access to the newly opened Bruce Highway bypass.

Located in an area of Gympie surrounded by various industrial and retail businesses, such as: Bunnings, Carter Holt Harvey, Lincraft, BCF, Harvey Norman, Autobarn, Andersens Carpets as well as engineering workshops and loads of other small to large industrial businesses. Very popular and well visited area of town for locals and visitors alike.

There is the air-conditioned main building of approximately 100m² in size, block construction with office, large open room which is approximately 5m x 8m and two 4m x 4m rooms. Kitchenette with sink, stove and bench. Bathroom with shower and toilet and 8m x 5m drive through covered area.

7m x 7m lock-up shed with concrete floor and 3 phase electricity plus a 6m x 7m concrete hardstand area.

The 1269m² allotment has a large flat storage area and is fully fenced with cyclone security fencing. Would suit a multitude of businesses such as: manufacturing, training rooms, machinery sales, redevelopment or the new business you have in mind. Properties of this caliber rarely become available. Call me today to arrange an inspection.

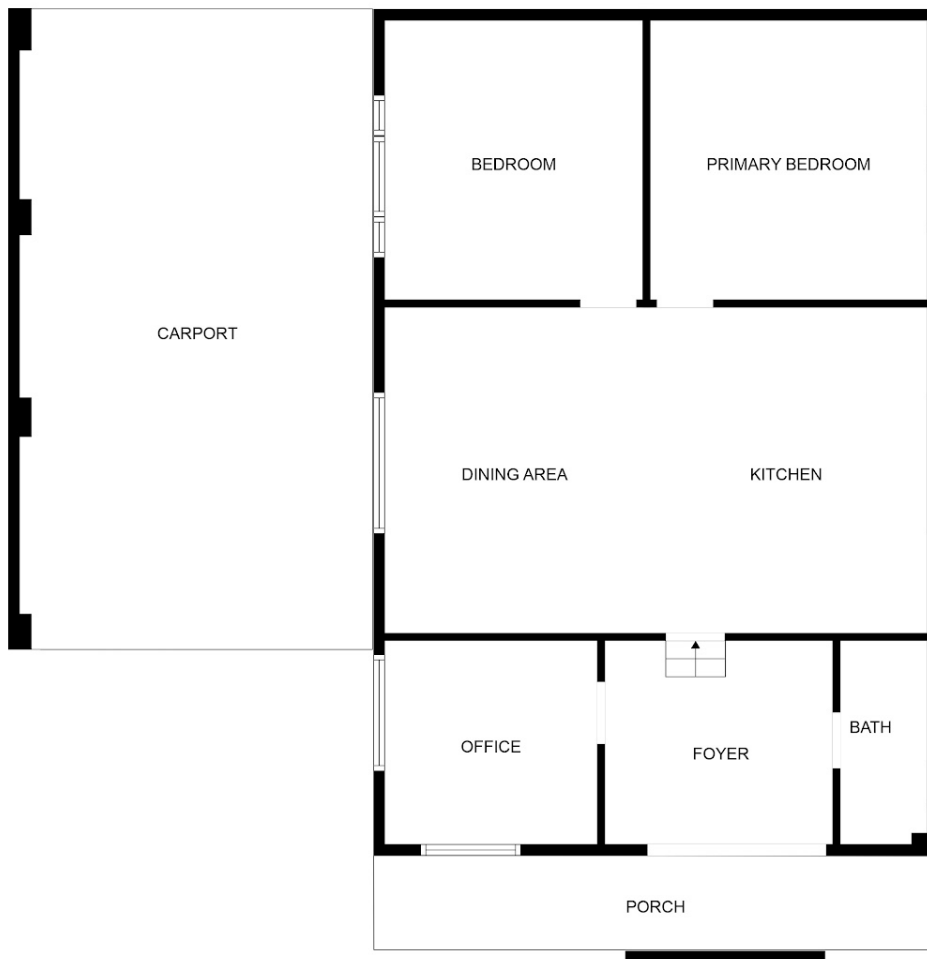
0 BED | 0 BATH | 0 CAR

PRICE:
\$645,000

OPEN FOR INSPECTION:
N/A



Wayne and Christine Fewtrell
0408450856
christine@atrealty.com.au
www.fewtrellrealty.com



FLOOR PLAN CREATED BY CUBICASA APP. MEASUREMENTS DEEMED HIGHLY RELIABLE BUT NOT GUARANTEED.

Disclaimer: Please note this floor plan is for marketing purposes and is to be used as a guide only. All dimensions are estimates only and may not be exact measurements.