

FOR SALE

BASIN VIEW BEAUTY

Wright Way Realty Jervis Bay presents to the market what can only be described as a Basin View Beauty. Situated in a quiet location on the high side of the street sits this freshly updated home with double detached carport, separate accomodation, and more...

- @ The perfect place for first home owners, holiday makers or retirees
- @ An elevated and gently sloping fully fenced parcel of 575 square metres
- @ Freshly painted, new floor coverings, solar panels, plus on site van with annexe
- @ Cleverly combined bathroom/laundry space with huge shower recess
- @ Double detached carport with ramp access and great side access
- @ Zoned R2 low density residential, near village shops and boat ramp
- @ Extremely tidy home sitting on expansive low maintenance lawns
- @ Includes refrigerator, washing machine, clothes dryer and TV
- @ Will appeal to first home buyers, holiday makers and retirees
- @ Chance for investors/builders to capitalise on superb locale

@ Call Glenn right now for more information, or to arrange an inspection.

2 BED | 1 BATH | 2 CAR

PRICE:

Price Guide \$575,000 - \$600,000

OPEN FOR INSPECTION:

N/A

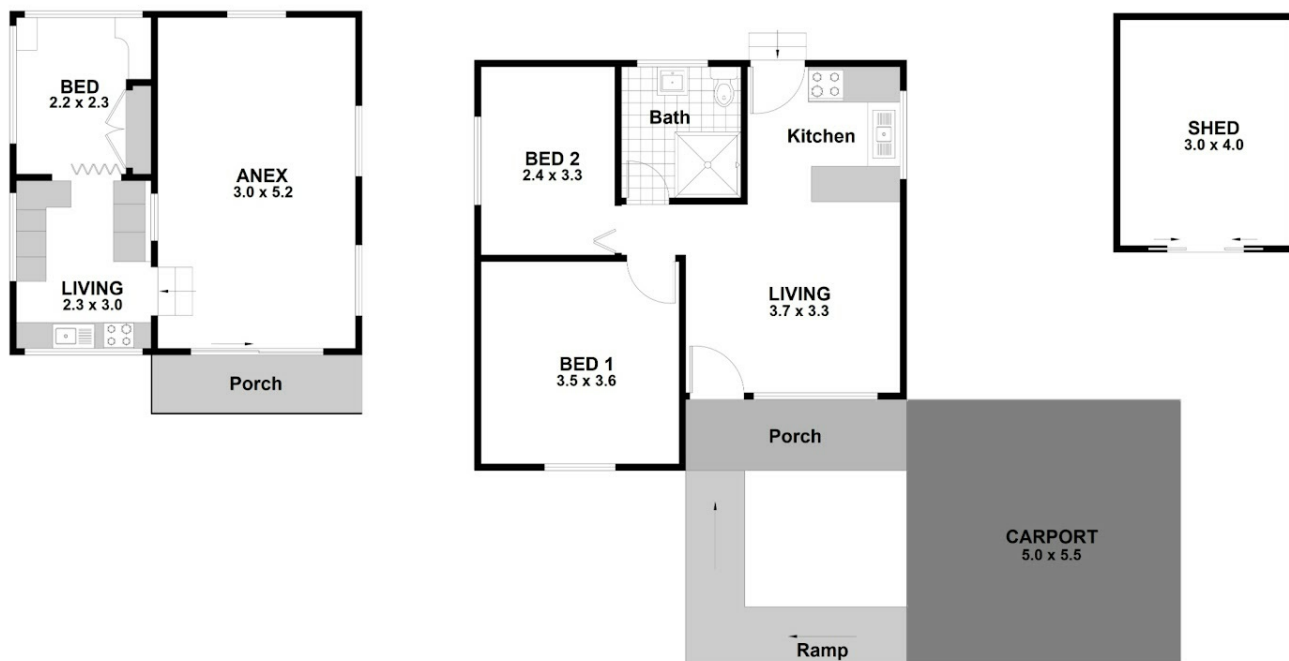


Glenn Wright

0408120866

glenn.wright@atrealty.com.au

Wright Way Realty



25 Audrey Avenue, BASIN VIEW



2



1



2+1

Scale is in Metres & indicative only & dimensions are only approximate.
The information contained & gathered herein is we believe from sources to be reliable.
We can not guarantee it's accuracy & persons should rely on their own enquiries.

WRIGHTWAY
realty
@realty

Disclaimer: Please note this floor plan is for marketing purposes and is to be used as a guide only. All dimensions are estimates only and may not be exact measurements.