



SOLD

UNFINISHED GEM: SPACIOUS 4-BEDROOM HOME ON A LARGE BLOCK – PERFECT FOR INVESTORS OR HANDY HOMEOWNERS- EXPRESSIONS OF INTEREST OVER \$250,000

1158 SQM HATCHETT BLOCK-A FABULOUS UNFINISHED PROJECT PERFECT FOR A HANDYPERSON, 177 SQM 4 BRM, 2 BATH +ENSUITE, SHED, RUMPUS, OFFICE- EXPRESSIONS OF INTEREREST AROUND \$250,000.

Here's your chance to secure a standout property with incredible potential. Situated on a generous 1158m² hatchet block, this unfinished project is ideal for someone with the vision to complete it as a dream family home or a lucrative investment.

With expressions of interest around \$250,000, this opportunity is priced well below replacement cost, making it a must-see for savvy buyers

Key Features of the Property:

- Spacious Modern Design
- The property boasts a 177m² floor plan, thoughtfully designed with modern living in mind. It includes:
 - o 4 Bedrooms with a master suite featuring a private ensuite.
 - o 2 Bathrooms offering convenience for family living.
 - o Multiple living areas, including a dedicated lounge, open-plan kitchen and dining, a rumpus room, and a separate office for work-from-home flexibility.
 - o Covered patio for outdoor entertaining and a charming covered porch entrance.
 - o Internal laundry for everyday convenience.
- Impressive Shed

A large 3-bay lock-up shed provides secure storage for vehicles, tools, or hobbies, with easy street access for large vehicles, making it ideal for tradespeople or those with caravans or boats.

• Huge Block with Privacy

The hatchet block design offers privacy and space while the fully fenced yard provides security for families or pets. The 1158m² lot is perfect for landscaping, a pool, or other outdoor

4 BED | 2 BATH | 3 CAR

PRICE:
\$237,500

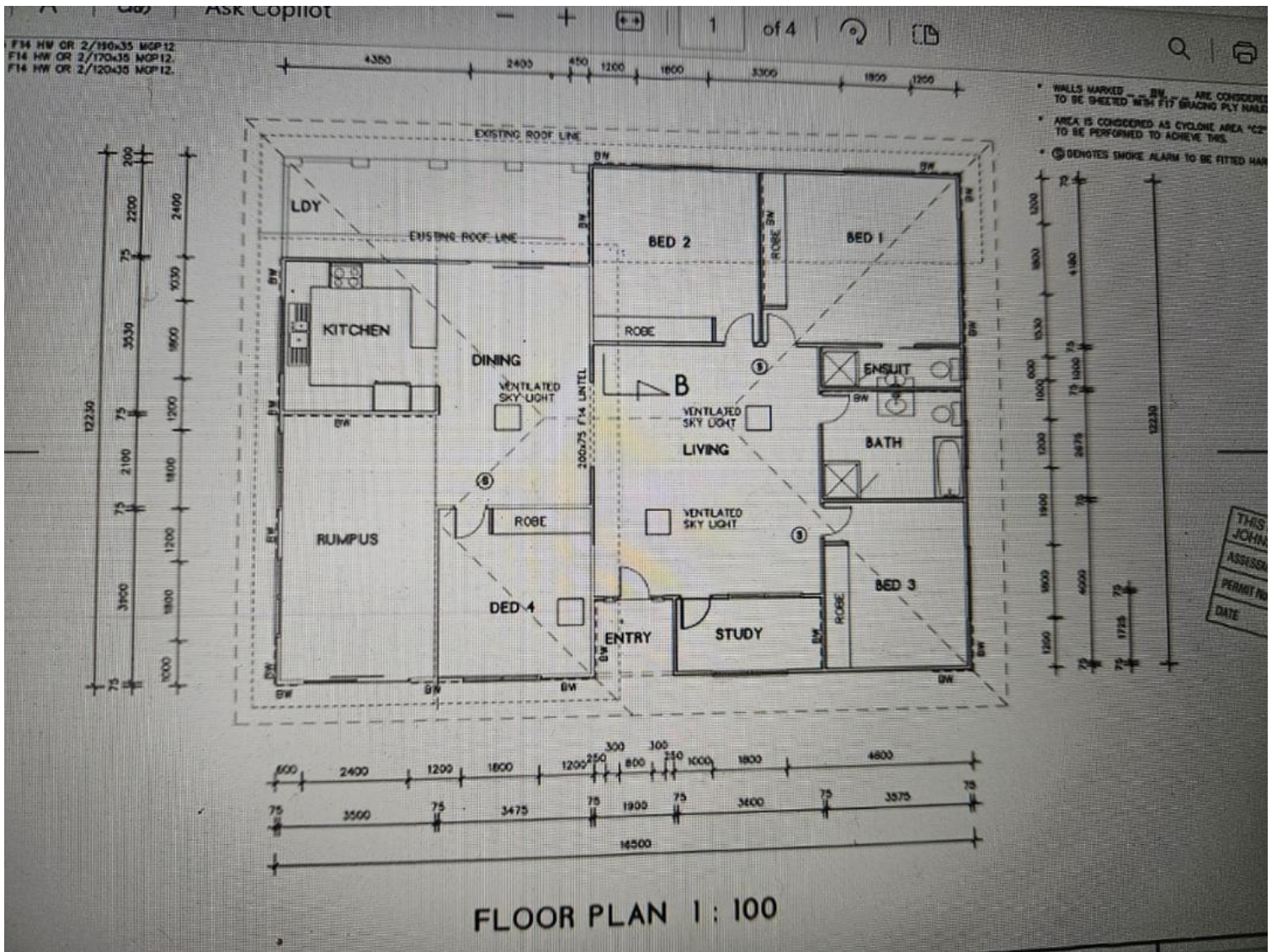
OPEN FOR INSPECTION:
N/A



Jean Laterre
0437696969

jean.ccr@atrealty.com.au

www.atrealty.com.au



Disclaimer: Please note this floor plan is for marketing purposes and is to be used as a guide only. All dimensions are estimates only and may not be exact measurements.