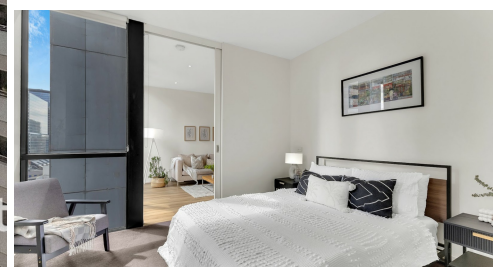


# 1509/225 ELIZABETH STREET MELBOURNE



## FOR LEASE

### FOR LEASE: APARTMENT | 1 BED + 1 BATH | LOCATED IN THE HEART OF MELBOURNE - UNFURNISHED APARTMENT

Experience the perfect blend of style and comfort in this spacious one-bedroom apartment, crafted by the renowned Fender Katsalidis Architects at The Nova on Elizabeth Street. Bathed in natural light, the thoughtfully designed interior features an open-plan living and dining area, a generously lit north-facing bedroom with a walk-in robe, and a sleek kitchen finished with glass and stone surfaces, stainless steel four-burner gas cooktop, and ample storage. The modern bathroom is complemented by a European-style laundry for added convenience.

Additional highlights include ducted heating and cooling, secure entry, an on-site building manager, and access to a well-equipped ground-floor gym. This exceptional apartment offers a lifestyle of effortless elegance and convenience in the heart of the city.

Please Note: Furniture is not included.

\* We encourage you to inspect our 3D Virtual tour, Video walkthrough and photos provided here and submit your rental application by clicking the Apply button. we can organize one private inspection for the finalized tenant before settlement occurs.

\* Inspections: By Appointments only. Please register your details with the agent before you attend the advertised inspection time slots. An inspection may be cancelled or rescheduled without prior notification. Alternatively, please call Nandana on 0452611234 to schedule your private inspection where possible.

Perfectly situated in Melbourne's bustling heart opposite the GPO, this apartment provides unmatched access to Bourke St Mall, Queen Vic Market, RMIT, and Melbourne Uni. With trams at your doorstep and Melbourne Central Train station mere footsteps away, convenience is at your fingertips.

Within a short 3-minute walk, you'll find New England College, while the University of Canberra is a quick 8-minute walk away. Additionally, schools like RMIT are a 5-minute drive, and Carlton Gardens Primary School, The University of Melbourne, Docklands Primary School, and South

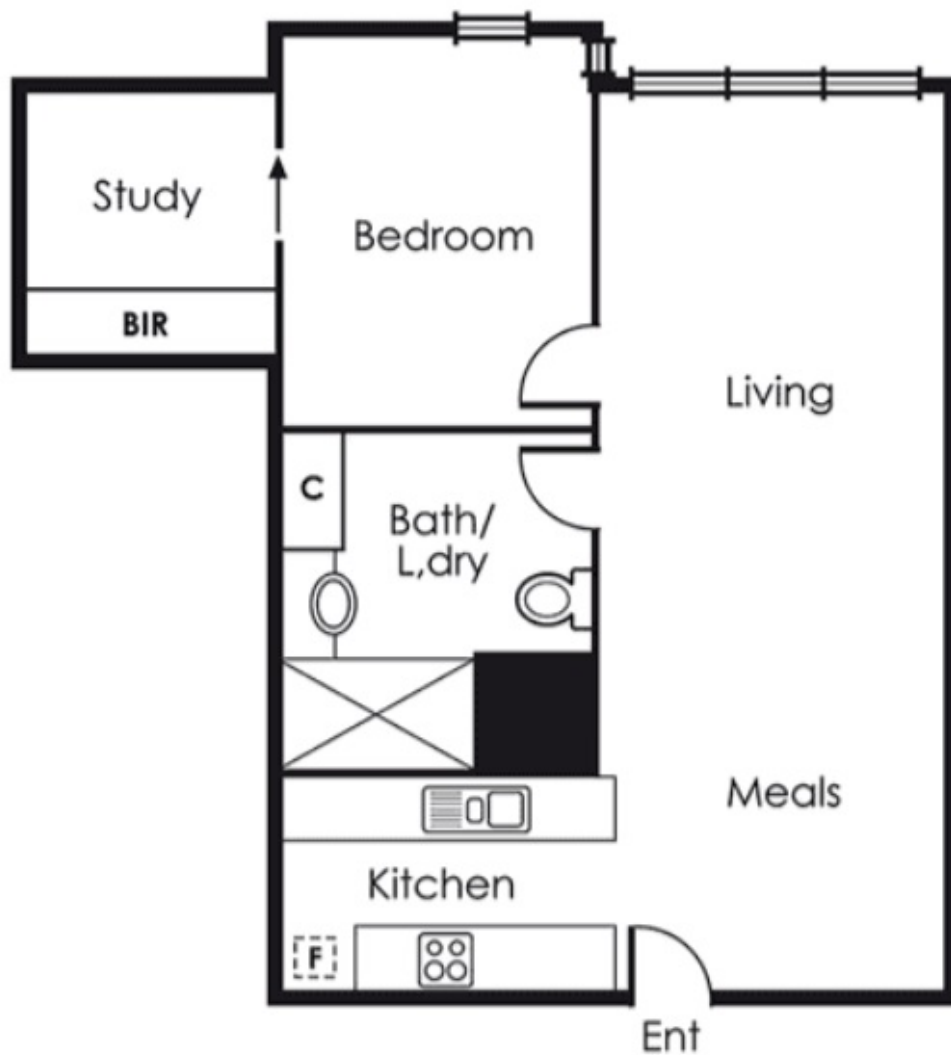
1 BED | 1 BATH | 0 CAR

PRICE:  
\$570 per week

OPEN FOR INSPECTION:  
N/A



**Nandana Peiris**  
**0452611234**  
nandana@atrealty.com.au  
Real Alliance



**1509/225 Elizabeth Street,  
Melbourne, VIC, 3000**

Disclaimer: Please note this floor plan is for marketing purposes and is to be used as a guide only. All dimensions are estimates only and may not be exact measurements.