



FOR SALE

STUNNING FAMILY HOME IN A PRIME LOCATION!

This spacious and beautifully designed home is perfect for families seeking comfort, style, and convenience. With four bedrooms, two and a half bathrooms, and multiple living areas, this property offers the space and flexibility to suit your lifestyle.

The luxurious master bedroom features a walk-in robe and en-suite, while the additional bedrooms are equipped with built-in robes, providing ample storage. The modern kitchen is a true centerpiece, boasting a large walk-in pantry, dishwasher, and plenty of storage. It opens seamlessly into the dining and main living areas, creating a welcoming space for family gatherings. A formal lounge at the front of the house and an upstairs retreat offer additional options for relaxation or entertaining.

For your convenience, the home includes a double remote garage with internal access, ducted heating, evaporative cooling upstairs, a laundry, and a powder room. Outside, the landscaped, low-maintenance yard is perfect for entertaining or enjoying quiet moments.

Situated in a prime location, this home is close to beautiful beaches, walking tracks, parklands, and the marina. It is also zoned to the highly sought-after Alamanda K-9 School, making it an ideal choice for families.

Currently leased on a month to month basis for \$650pw with the option to extend.

4 BED | 2 BATH | 4 CAR

PRICE:

\$730,000 - \$780,000

OPEN FOR INSPECTION:

N/A

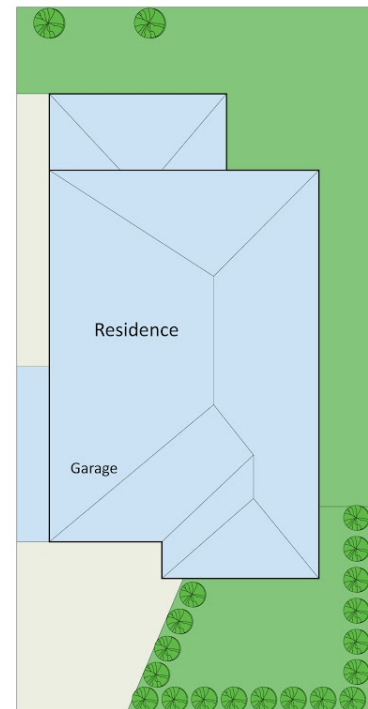
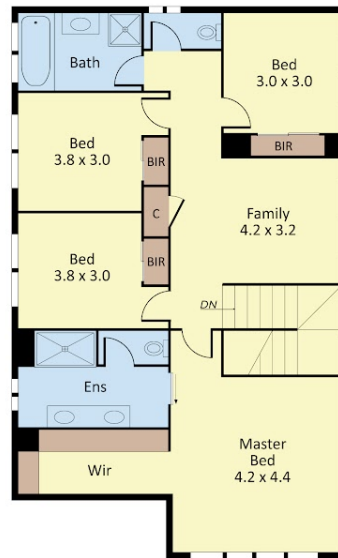
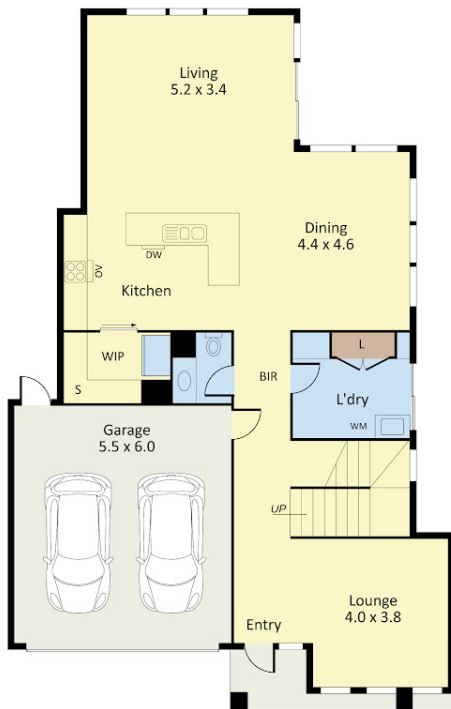


Joseph Hanna

0423966320

joseph@atrealty.com.au

www.atrealty.com.au



21 Jetty Road, Werribee South

Dimensions are approximate and for illustrative purposes only



Disclaimer: Please note this floor plan is for marketing purposes and is to be used as a guide only. All dimensions are estimates only and may not be exact measurements.