

2 EARL STREET, COFFS HARBOUR, NSW, 2450



# FOR SALE

## PRIME LOCATION - GOLF, CBD AND MUCH MORE !!!

Prepare to be impressed as you arrange your personal viewing of this charming property, offering an unbeatable combination of comfort, convenience, and captivating views. also included in this lovely property is a chair lift for easy access no need to walk the stairs. Nestled in a prime central location, this elevated home borders a serene nature reserve and boasts sweeping vistas over Coffs Harbour Golf Course. With its perfect balance of peaceful ambiance and vibrant lifestyle, this home promises to enrich your daily routine. Just a short stroll from Brelsford Park playground, you'll find the bustling heart of Coffs CBD, packed with cafes, restaurants, markets, clubs, and a wealth of shopping options. The airport, railway station, schools, hospitals, and beaches are all just a five-minute drive away.

Set on a generous 715 sqm block, this quality brick residence, has been tastefully updated with modern renovations while maintaining its classic charm. Inside, you'll discover three spacious bedrooms, a sunny sunroom, and expansive open-plan living areas. Beautifully polished hardwood floors flow throughout, adding warmth and easy maintenance. The well-appointed kitchen features stainless steel appliances and ample cupboard space for the home chef.

Step outside and enjoy your morning coffee on either the front or back balcony, both perfect for alfresco relaxation while taking in the stunning views. The larger-than-usual double garage offers ample space for vehicles, a golf buggy, or even a workshop, with additional open space under the house for added storage or projects.

This home offers the perfect blend of lifestyle, space, and convenience — a rare find that won't last long!

Call Cheryl Donaldson today on 0466 037 468

3 BED | 2 BATH | 2 CAR

### PRICE:

\$865,000 - \$895,000

### OPEN FOR INSPECTION:

N/A

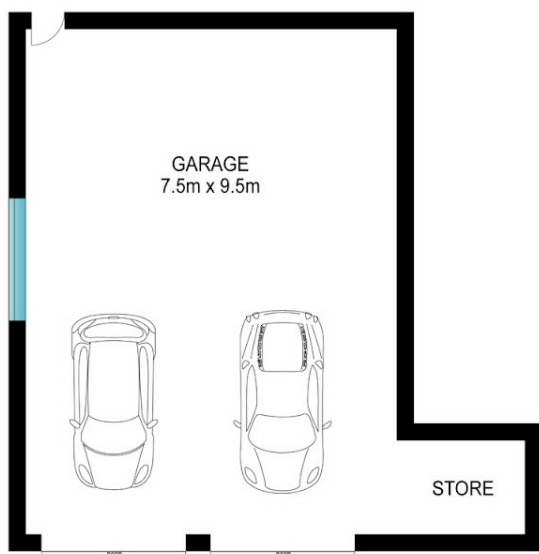


**Cheryl Donaldson**

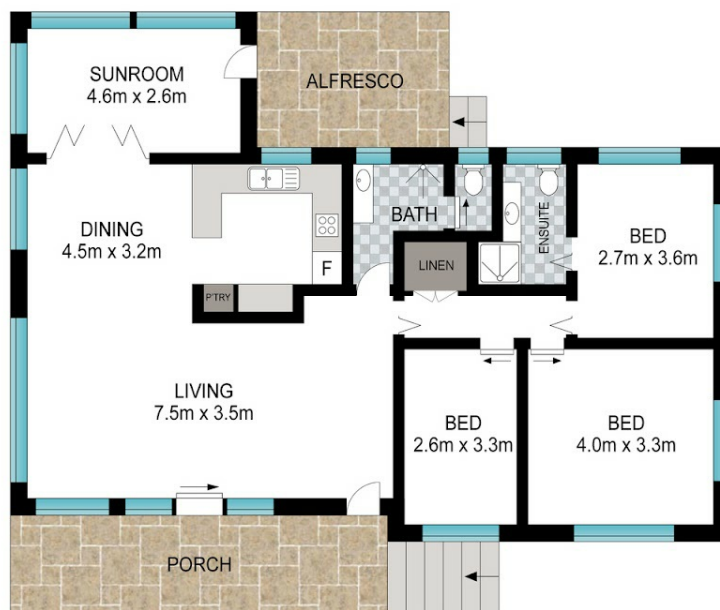
**0466037468**

cheryl@atrealty.com.au

[www.atrealty.com.au](http://www.atrealty.com.au)



LOWER LEVEL



UPPER LEVEL



Scale in metres. Indicative only. Dimensions are approximate. All information contained herein is gathered from sources we believe to be reliable. However, we cannot guarantee its accuracy and interested persons should rely on their own enquiries.

INT: 191 m<sup>2</sup>  
EXT: 22 m<sup>2</sup>

2 Earl Street, Coffs Harbour



Disclaimer: Please note this floor plan is for marketing purposes and is to be used as a guide only. All dimensions are estimates only and may not be exact measurements.