



FOR SALE

THE EPITOME OF LUXURY COUNTRY LIVING – 12 ACRES, PERFECT EQUINE PROPERTY OR HOBBIE FARM

The epitome of luxury living. From the moment you step onto the property, you will be captivated by its charm.

As you enter through the front door, you will be greeted by a spacious foyer that leads to the formal area's of the home. Stepping through to the open concept living and dining area boasts high ceilings and large windows, allowing natural light to flood in and create a warm and inviting atmosphere. The modern kitchen is a chef's dream, equipped with top-of-the-line appliances including a Falcon classic deluxe cooking unit, ample storage space with WIP, and bench space, perfect for entertaining guests.

This double storey home offers more than just ample living space. On the main floor, you will find, formal living and dining, and an open family room, perfect for family to relax and enjoy, a study nook/ home office. The 3 bedrooms downstairs in the main home include, a good size master, with dressing room and BIR plus ensuite.

The one bedroom self contained unit with ensuite accommodation is complete with its own kitchen, open meals and living area. A 2nd bedroom or kids' playroom for the main house. Upstairs, has a combination of rooms that could house more bedrooms, living areas and storage. But the beauty of this property doesn't end there. Step outside onto the expansive verandah and take in the breathtaking views of the surrounding countryside. The deck is the perfect spot to enjoy your morning coffee or host a summer BBQ with friends and family. The house yard has the vegetable garden, kids play ground and safe place for the dogs. Large chook pen to house your feathered friends & establish trees and garden.

The property also features 2 large sheds, providing ample storage space for all your outdoor equipment and toys. Separate home office or work area. A Mezzanine floor creates more storage room, with plenty of space left for the boys' toys, floats etc.

The second shed has room for all the farm vehicles and feed, which opens to the stables with hotwash area. The timber railed fenced 26m x 60m (approx) Grass arena runs off the stables and is perfect for all your horsing needs.

Well fenced paddocks, a small creek, plus 3 dams and 3x 22,000L water tanks on top of town water.

Enjoy the convenience of eco-friendly living with the property's solar panels & battery, reducing your carbon footprint and saving you money on energy bills.

5 BED | 3 BATH | 10 CAR

PRICE:
\$2,250,000

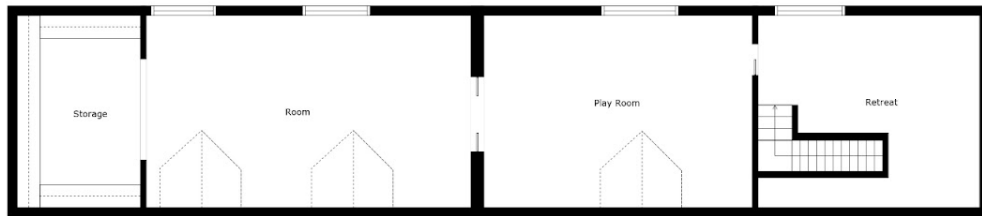
OPEN FOR INSPECTION:
N/A



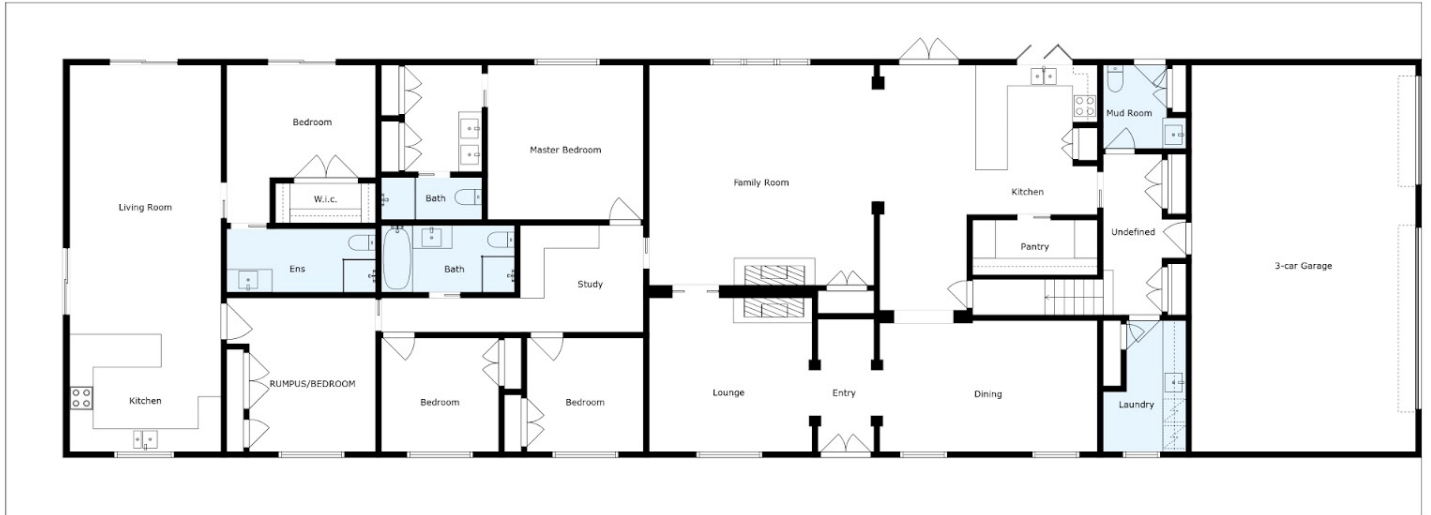
Melissa Ahearn
0409183763

mahearn@atrealty.com.au

atrealtypropertysalesgippsland.com.au



Floor 2



Floor 1

Floor Plan Created By Cubicasa App. Measurements Deemed Highly Reliable But Not Guaranteed.

Disclaimer: Please note this floor plan is for marketing purposes and is to be used as a guide only. All dimensions are estimates only and may not be exact measurements.